

## ProSAFE® Fast Ethernet Rack Mountable Switches

Data Sheet

JFS516v2, JFS524v2



The NETGEAR® Fast Ethernet Unmanaged Switches series are purposely designed, well built and rigorously tested for small and medium-sized networks where reliability and performance are the keys while Plug-N-Play connectivity and operational cost savings are the must-haves. With a 1U form factor, they can be placed on the desktop or rack-mounted with the included rack-mount kit for professional installation.



JFS516v2

The JFS516 and JFS524 come with 16 and 24 ports 10/100Mbps copper ports respectively. They offer energy efficiency features and are compliant with the IEEE 802.3az standard. Both models are fanless for silent operation, business class rugged, and come with a lifetime warranty\*.



JFS524v2

### Highlights

#### Instant Network Connectivity for Your Small Business and Home Office

- Non-blocking switching architecture forwards and filters packets at full wire-speed for maximum throughput
- Up to 24 ports, each delivering up to 200Mbps of dedicated network bandwidth to servers, PCs and network devices
- Energy Efficient Ethernet (IEEE802.3az) for optimized power saving
- Rugged metal case and fanless design for reliable and silent operation

#### Business-Class, Built with Performance and Reliability

- Plug-and-play—begins working as soon as it's powered on
- Auto MDI/MDI-X automatically adjusts for straight-through or crossover cables
- Auto Sensing and IEEE 802.3 Nway Auto Negotiation
- IEEE 802.3x Flow Control
- IEEE 802.1p QoS for traffic prioritization
- Intelligent LEDs for port link status and activity
- Compact size for the desktop or for mounting in a standard 19 -inch rack
- Backed by a NETGEAR Lifetime Warranty\*

Page 2	Models at a Glance
Page 3	Network Diagram
Page 4	Product Specifications
Page 5	Technical Specifications
Page 5	Ordering Information



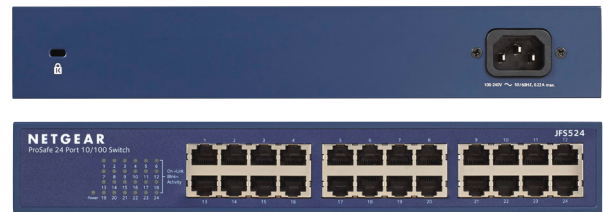
### Hardware at a Glance

		FRONT		REAR
Model Name	Form-Factor	10/100Base-T RJ45 Ports	LED	Power Supply
JFS516v2	Rackmount	16	Speed, Link and Activity	Internal
JFS524v2	Rackmount	24	Speed, Link and Activity	Internal



**JFS516v2** is a 16-port 10/100Base-T Fast Ethernet Switch

- Fanless
- Rack-mountable



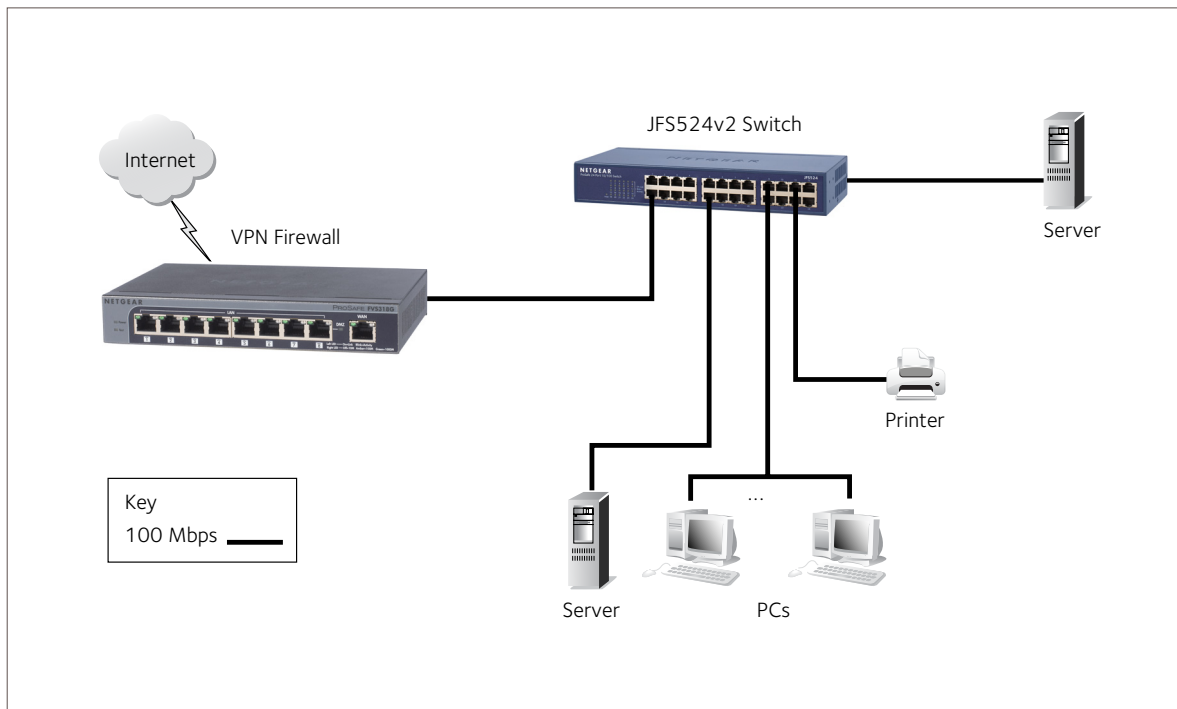
**JFS524v2** is a 24-port 10/100base-T Fast Ethernet Switch

- Fanless
- Rack-mountable

### Performance at a Glance

Model Name	Packet buffer	MAC address table	Switching Fabric	Jumbo Frames	IEEE 802.1p
JFS516v2	2Mb	8K	3.2Gbps	2KB	Yes
JFS524v2	2Mb	8K	4.8Gbps	2KB	Yes

### Example of a Network Diagram



### The NETGEAR ProSAFE Fast Ethernet Switch, the right-sized solution with the best value

- Fast Ethernet for the best value at the most affordable price
- IEEE 802.1p QoS for traffic prioritization
- Fanless design for quiet operation
- Energy Efficient Ethernet (EEE) for optimized power and cost savings
- Lifetime warranty for peace-of-mind

### Product Specifications

FEATURES	JFS516v2	JFS524v2
Ethernet Speed	10/100Mbps Fast Ethernet	10/100Mbps Fast Ethernet
Number of ports	16	24
Short cable power saving	Yes	Yes
Energy Efficient Ethernet Support IEEE 802.3az	Yes	Yes
Queue WRR Ratio	8:4:2:1	8:4:2:1
MAC Table Size	8K	8K
Packet buffer Size	2Mb	2Mb
Jumbo Frames	2KB	2KB
IEEE 802.1p QoS	Yes	Yes
MTBF (hours)	2,956,082	2,940,540
<b>IEEE NETWORK PROTOCOLS</b>		
IEEE 802.3 Ethernet	IEEE 802.3i 10BASE-T	IEEE 802.3u 100BASE-T
IEEE 802.3i 10BASE-T	IEEE 802.3x Full-duplex Flow Control	IEEE 802.1p Class of Service
<b>PHYSICAL SPECIFICATIONS</b>		
Weight (kg)	0.92 (2.03 lbs)	1.00 (2.20 lbs)
Dimensions (WxDxH) mm	280 x 126 x 44 mm	280 x 126 x 44 mm
<b>POWER CONSUMPTION (WHEN ALL PORTS USED, LINE-RATE TRAFFIC)</b>		
Worst case, all ports used, line-rate traffic	2.7W	4.0W

### Technical Specifications

#### LEDs

##### Per port

- Speed, Link, Activity

##### Per device

- Power

#### Environmental Conditions

##### Operating

##### Temperature

- 32° to 122°F (0° to 50°C)

##### Humidity

- 90% maximum relative humidity, non-condensing

##### Altitude

- 10,000 ft (3,000 m) maximum

#### Storage

##### Temperature

- – 4° to 158°F (–20° to 70°C)

##### Humidity

- 95% maximum relative humidity, non-condensing

##### Altitude

- 10,000 ft (3,000 m) maximum

#### Electromagnetic Emissions and Immunity

##### Certifications

- CE Class A
- FCC Part 15 Class A
- VCCI Class A
- EN 55022 (CISPR 22) Class A
- EN 55024
- CCC

#### Safety

##### Certifications

- UL listed (UL 1950)/cUL IEC 950/EN 60950
- CCC (China Compulsory Certificate)
- CB
- KCC
- GHOST

#### Warranty and Support\*

- ProSAFE Lifetime Warranty
- Lifetime 24x7 Online Chat Technical Support
- 90 days (24/7) Live Phone Technical Support
- Lifetime Next Business Day (NBD) Hardware Replacement

#### ProSUPPORT Service Packs Available

- On Call 24 x 7, Category 1\*\*
  - PMB0311 (1 yr.)
  - PBM0331 (3 yrs.)
  - PMB0351 (5 yrs.)

### Ordering Information

#### Package Content

- 16- or 24-port Fast Ethernet Switch (JFS516v2 or JFS524v2)
- Power cord
- Rack-mounting kit
- Hardware Install Guide

#### Ordering Information

##### North America and Latin America:

JFS516-200NAS  
JFS524-200NAS

##### Europe:

JFS516-200EUS  
JFS524-200EUS

##### Asia:

JFS516-200AUS  
JFS524-200AUS

##### China:

JFS524-200PRS

\* This product comes with a limited warranty that is valid only if purchased from a NETGEAR authorized reseller, and modifications to product may void the warranty; covers hardware, fans, and internal power supplies—not software or external power supplies; see <http://www.netgear.com/about/warranty/> for details. 2-year warranty on power adapters on applicable models. Lifetime technical support includes basic phone support for 90 days from purchase date and lifetime online chat support when purchased from a NETGEAR authorized reseller.

\*\* The NETGEAR OnCall 24x7 contract provides unlimited phone and email technical support for your networking product. For ProSAFE products purchased prior to 06/2014, also includes next business day hardware replacement.

† NETGEAR #1 in US Market Share according to NPD data for Unmanaged and Web/Smart Switches, April 2015.

NETGEAR, the NETGEAR Logo, ProSUPPORT and ProSAFE are trademarks of NETGEAR, Inc. in the United States and/or other countries. Other brand names mentioned herein are for identification purposes only and may be trademarks of their respective holder(s). Information is subject to change without notice. © 2015 NETGEAR, Inc. All rights reserved.