

Color LED Flat Panel Monitors

VESA COMPATIBLE

HDMI/VGA INPUT

ECO-FRIENDLY

VM17LED
VM19LED

17" LED monitor

19" LED monitor

Features

- Displays up to 16.7 million colors
- 1280 (H) x 1024 (V) SXGA resolution
- Built-in speakers
- Convenient front controls for screen programming
- Input signal detection provides easy connection
- 290cd/m2 Brightness
- 500:1 Contrast ratio
- HDMI, VGA (D-Sub 15 pins), audio, video inputs
- 12VDC 40W (UL & CSA listed power supply included)
- VESA compatible
- 2 year warranty



**ECO-FRIENDLY - LOW ENERGY CONSUMPTION
GREENER THAN LCDs**

Specifications

Monitor	VM17LED	VM19LED
Composite Output	BNC x 2	
Composite Input	BNC x 2	
Single Connector	VGA x 1, RCA x 2, PC Audio x 1, HDMI x 1	
Speaker	1.5W x 2	
Display Mode	Video 1 / Video 2 / PC / HDMI	
AC Power	AC 100 - 240V 50/60Hz	
Temperature	Operation: 32° F - 104° F, Storage: 14° F - 140° F	
Power Consumption	15W Max. in "ON" mode Under 3W in power saving mode (100 VAC), Under 5W in power saving mode (240 VAC)	
OSD Control	Picture Mode, Contrast, Brightness, Color, Tint, Sharpness, Color Temperature, DNR	
OSD Languages	English, German, French, Italian, Spanish, Russian, Turkish, Polish, Dutch, Czech	
Auto Adjustment	Yes (Only for VGA mode)	
De-Interlace	Yes	
Wall Mount	Optional	
Accessories	Adapter, power cord, manual VGA cable	
Safety	UL, FCC, CE, RoHS	
Tilt	5°-15°	
Humidity	10% - 90%	
Monitor Scan	Microprocessor controlled	
Pixel Pitch	0.264 x 0.264mm	0.294 - 0.294mm
Pixel Format	1280 x 1024	1280 x 1024
Response Time	5ms	5ms
Color Depth	16.7 Million colors	
Viewing Angle	Vertical -80°, 80° / Horizontal -85°, 85°	
Display Area	13.3" H x 10.6" V	14.8" H x 11.8" V
Dimensions	15.1" W x 15.1" H x 6.4" D	16.7" W x 16.3" H x 6.5" D
Weight	7.5 lbs.	7.7 lbs.

18.5", 21.5" High Resolution TFT Color LCD Monitors

VESA COMPATIBLE

VGA INPUT

16.7 MILLION COLORS

M185LCBV4 18.5" monitor
M215LCBV4 21.5" monitor

Features

- Displays up to 16.7 million colors
- Convenient front controls for on-screen programming
- VGA input
- Stereo speakers
- Input signal detection provides easy connection
- 1 year warranty



Specifications	M185LCBV4	M215LCBV4
Screen	18.5" TFT	21.5" TFT
Resolution.....	1360 (H) x 768 (V)	1920 (H) x 1080 (V)
Aspect Ratio	16:9	16:9
Viewing Angle	170° (H) 170° (V)	170° (H) 170° (V)
Viewing Lines	420 TV lines	420 TV lines
Contrast Ratio.....	10000:1 (DCR)	10000:1 (DCR)
Response Time.....	5ms	2ms
2D Comb Filter with De-interlace.....	Yes	Yes
2D Noise Reduction.....	Yes	Yes
Brightness	300cd/m2	300cd/m2
Speakers	2 each (2 watts)	2 each (2 watts)
Composite Inputs/Outputs	BNC x 1 / BNC x 1	BNC x 1 / BNC x 1
VGA	VGA x 1	VGA x 1
Audio Inputs.....	Stereo PC	Stereo PC
Audio Adjustment.....	Yes	Yes
Wall Hanging	VESA standard	VESA standard
Vesa Size.....	100 x 100mm	100 x 100mm
Stand and Bezel	Plastic	Plastic
OSD Control	Yes	Yes
OSD Language.....	English, French, Korean and Simplified Chinese	
Operating Temperature.....	32° F - 122° F	32° F - 122° F
Power Consumption	Less than 20W	Less than 30W
Power Supply (built-in)	AC110-240V, 50/60 Hz	AC110-240V, 50/60 Hz
Dimensions.....	17.5" (W) x 13.8" (H) x 5.43" (D)	20.2" (W) x 15.4" (H) x 5.35" (D)
Weight	7.89 lbs.	9.7 lbs.

Power cord, audio cable, VGA cable and user's guide included in the box with all monitors.

Safety includes FCC, CE, CB, RoHS

Optional Mounting Accessories Fits All VESA Compatible LCD Monitors

- Supports LCD monitors up to 17 lbs.
- Mates to both 75 & 100mm VESA hole patterns
- Mounting hardware and adjustment tool included
- Allows for 160 degree horizontal and 100 degree vertical adjustment of your LCD monitor



LCDVLW2
10" extension arm for additional versatility



LCDVLW1

17", 19" High Resolution TFT Color LCD Monitors

VESA COMPATIBLE

HDMI/VGA INPUT

16.7 MILLION COLORS

M17LCBVH3 17" monitor

M19LCBVH3 19" monitor

Features

- Displays up to 16.7 million colors
- Convenient front controls for on-screen programming
- HDMI/VGA input
- Stereo speakers
- Input signal detection provides easy connection
- 12VDC 4A (UL & CSA listed power supply included)
- 1 year warranty



Specifications

	M17LCBVH3	M19LCBVH3
Screen	17" TFT	19" TFT
Resolution.....	1280 (H) x 1024 (V) SXGA	1280 (H) x 1024 (V) SXGA
Aspect Ratio	4:3	4:3
Viewing Angle	170° (H) 160° (V)	170° (H) 160° (V)
Viewing Lines	500 TV lines	500 TV lines
Contrast Ratio.....	800:1	800:1
Response Time.....	6ms	6ms
3D Comb Filter w/De-interlace	2D	2D
3D Noise Reduction.....	3D	3D
Brightness	270cd/m2	270cd/m2
Speakers	2 each (2.5 watts)	2 each (2.5 watts)
Composite Inputs/Outputs	BNC x 1 / BNC x 1	BNC x 1 / BNC x 1
HDMI	HDMI x 1	HDMI x 1
VGA	VGA x 1	VGA x 1
Audio Inputs.....	Stereo PC / Audio R & L	Stereo PC / Audio R & L
Auto Adjustment	Yes	Yes
Wall Hanging	VESA standard	VESA standard
Vesa Size.....	100 x 100mm	100 x 100mm
Stand and Bezel	Plastic	Plastic
OSD Control	Yes	Yes
OSD Language.....	English, Spanish, French, German, Portuguese,	Russian, Italian and Simplified Chinese
Operating Temperature.....	32° F - 122° F	32° F - 122° F
Power Consumption	Less than 30W	Less than 30W
Power Supply	12VDC/4A (included)	12VDC/4A (included)
Screen Dimensions	15.25" (W) x 13" (H) x 2.5" (D)	16.5" (W) x 14" (H) x 2.5" (D)
Dimensions with Base	15.25" (W) x 14.5" (H) x 6" (D)	16.5" (W) x 15.5" (H) x 6" (D)
Weight	10.8 lbs.	12.1 lbs.

Power cord, adapter, user's guide and audio cable included in the box with all monitors.

Safety includes Energy Star, FCC-DOC, CE, RoHS

Optional Mounting Accessories Fits All VESA Compatible LCD Monitors

- Supports LCD monitors up to 17 lbs.
- Mates to both 75 & 100mm VESA hole patterns
- Mounting hardware and adjustment tool included
- Allows for 160 degree horizontal and 100 degree vertical adjustment of your LCD monitor



LCDVLW2

10" extension arm for additional versatility



LCDVLW1

15", 17", 19" High Resolution TFT Color LCD Monitors

VESA COMPATIBLE

INPUT SIGNAL DETECTION

16.7 MILLION COLORS

VM15LCD 15" monitor
VM17LCD 17" monitor
VM19LCD 19" monitor

*Limited Quantities Available
Call For Pricing*



Features

- Displays up to 16.7 million colors
- Convenient front controls for on-screen programming
- Stereo speakers
- Input signal detection provides easy connection
- 12VDC 4A (UL & CSA listed power supply included)
- 1 year warranty

VM15LCD

Screen15" TFT
Resolution.....1024 (H) x 768 (V) SXGA
Aspect Ratio4:3
Viewing Angle170° (H) 160° (V)
Viewing Lines500 TV lines
Contrast Ratio.....800:1
Response time.....6ms
3D Comb Filter
with De-interlace.....2D
3D Noise Reduction.....3D
Brightness270cd/m2
Speakers2 each (2.5 watts)
Composite Inputs/Outputs.....BNC x 1 / BNC x 1
VGA.....VGA x 1
DVI.....DVI x 1
Audio Inputs.....Stereo PC / Audio R & L
Audio Adjustment.....Yes
Wall HangingVESA standard
Vesa Size.....100 x 100mm
Stand and BezelPlastic
OSD ControlYes
OSD Language.....English, Spanish, French, German, Portuguese, Russian, Italian and Simplified Chinese
Operating Temperature.....32° F - 122° F
Power Consumption20W
Power Supply (included).....12VDC/4A
Screen Dimensions14.5" (W) x 12.25" (H) x 2.5" (D)
Dimensions with Base14.5" (W) x 13.75" (H) x 6" (D)
Weight7.3 lbs.

VM17LCD

17" TFT
1280 (H) x 1024 (V) SXGA
4:3
170° (H) 160° (V)
500 TV lines
800:1
6ms
2D
3D
270cd/m2
2 each (2.5 watts)
BNC x 1 / BNC x 1
VGA x 1
DVI x 1
Stereo PC / Audio R & L
Yes
VESA standard
100 x 100mm
Plastic
Yes
32° F - 122°
30W
12VDC/4A
15.25" (W) x 13" (H) x 2.5" (D)
15.25" (W) x 14.5" (H) x 6" (D)
10.8 lbs.

VM19LCD

19" TFT
1280 (H) x 1024 (V) SXGA
4:3
170° (H) 160° (V)
500 TV lines
800:1
6ms
2D
3D
270cd/m2
2 each (2.5 watts)
BNC x 1 / BNC x 1
VGA x 1
DVI x 1
Stereo PC / Audio R & L
Yes
VESA standard
100 x 100mm
Plastic
Yes
32° F - 122° F
40W
12VDC/4A
16.5" (W) x 14" (H) x 2.5" (D)
16.5" (W) x 15.5" (H) x 6" (D)
12.1 lbs.

Power cord, adapter, user's guide and audio cable included in the box with all monitors. Safety includes Energy Star, FCC-DOC, CE, RoHS

Optional Mounting Accessories Fits All VESA Compatible LCD Monitors

- Supports LCD monitors up to 17 lbs.
- Mates to both 75 & 100mm VESA hole patterns
- Mounting hardware and adjustment tool included
- Allows for 160 degree horizontal and 100 degree vertical adjustment of your LCD monitor



LCDVLW2

10" extension arm for additional versatility



LCDVLW1

19" Ultra High Resolution TFT Color LCD Monitor

VESA COMPATIBLE

PICTURE IN PICTURE

REMOTE CONTROL

VMHT19LCD

Features

- Professional TFT LCD for surveillance with multiple connections
- Compatible with VGA (640x480), SVGA(800X600), XGA (1024X768), SXGA (1280X1024) resolution
- Picture-in-picture feature that allows multi-picture display
- High brightness level and contrast ratio with super wide viewing angle
- Built-in 3D comb filter and 3D de-interlace for crisp picture performance
- Fast response time and refresh rate without time lag
- Provides 6500K and 9300K color temperature selection for user's preference
- Video inputs support NTSC / PAL standards
- Video looping output supports 75 Ohm auto termination
- Support audio and live-out function with stereo phone jack output
- VESA standards (100mm X 100mm) bracket compatibility
- 1 year warranty



Specifications

Panel Size	19.0"	Input Power	AC In x 1
Aspect Ratio	5:4	Termination	75 Ohm (Auto Termination)
Resolution / Scan	640 x 480 @ 60/72/75	Built-in Speakers	Yes (2)
	800 x 600 @ 56/60/72/75	Front Panel Buttons.....	Power, Source, Up, Down, Menu, Auto
	1024 x 768 @ 60/70/75	OSD Language.....	Multi Language
	1280 x 1024 @ 60/75	VESA Mounting	VESA 100
Brightness.....	270cd/m2	Safety & EMI.....	UL, CUL, FCC, CE
Viewing Angle (H/V).....	Left 80°/ Right 80° / Up 75° / Down 60°	Power AC.....	100-240V 50/60Hz
Response Time.....	8ms (Typ.)	Power Consumption	45W
Video Interface	D-SUB 15IN x 1, Video In x 2 (BNC), Video Out x 2 (BNC), S-Video In x 1	Operating Temperature / Humidity.....	14°F - 122°F / RH 20% - 80%
Audio Interface	Audio In x 2, Audio Out x 2, PC-Audio In x 1	Accessories	Power cord, User Manual, Remote Control, VGA Cable
		Dimensions.....	15.5" (H) x 16.7" (W) x 2.9" (D)
		Weight	14 lbs.
		Optional Rack Mount.....	RMHT19

Rev. 2/1/12

26" High Resolution TFT Color LCD Monitor

VESA COMPATIBLE

ON SCREEN MENU

REMOTE CONTROL

VM26LCD

Features

- Glass protective front panel
- Advanced on-screen menu control
- Multi-video standard (NTSC / PAL / Auto)
- Multi-language support
- Input signal detection provides easy connection
- VESA compatible
- 1 year warranty



Specifications

Screen	26" TFT	Video	1 D-SUB 15 pin, 3 video in-out (BNC), 1 S-video in 4 pin Din connector	Brightness.....	500cd
WXGA Resolution....	1366 (H) x 768 (V)			Contrast Ratio.....	800:1
SXGA Resolution....	1280 (H) x 1024 (V)			Dimensions.....	25.9" (W) x 3.7" (D) x 16.6" (H)
Audio	2 in - 2 out			Weight	29 lbs.

Rev. 10/10/11

17" Color LCD A/V Monitor with TV Tuner & Remote Control

VESA COMPATIBLE

BUILT-IN TV TUNER

REMOTE CONTROL

VMTV17LCD

Features

- Built-in TV tuner with IR remote control
- High contrast color TFT LCD display supports resolution up to 1280 x 1024 @ 75Hz
- Compatible with IBM VGA, IBM SXGA and Macintosh standards
- Embedded audio system provides excellent sound performance
- A/V, S-Video, VGA and antenna/cable inputs
- Power management system conforms to VESA DPMS standards
- Supports DDC 1/2B for Plug & Play compatibility
- Advanced OSD control for picture quality adjustment
- Detachable stand for wall-mounting applications (accessory mount required)
- 1 year warranty



Specifications

Max Resolution.....	1280 (H) x 1024 (V) (SXGA)	Front Controls.....	Auto adjust with LED, OSD Menu, +/- Adjustment
LCD Display.....	17" Active Matrix TFT LCD Panel	OSD Menu.....	Contrast, Brightness, Auto Adjust, Clock, Phase, H-Position, V-Position, Input: (PC, TV, A/V, S-Video)
Pixel Pitch.....	0.264 (H) x 0.264 (V) mm	Power Adapter Included.....	AC Input: 100-240V - 1.8A, 50-60Hz DC Input: 12V/4.0A
Contrast Ratio.....	400:1	Operating Temperature/ Humidity.....	32° F - 122° F / 20% - 95%
Brightness.....	350 cd/m2	Certification.....	BSMI, FCC (DOC), CE-B, UL, TUV/GS
Response Time.....	Tr 15ms; Tf 10ms	Weight.....	11 lbs.
Display Color.....	16.777M	Dimensions.....	16.25" (H) x 16.30" (W) x 7.68" (D)
Angle Viewing.....	Left/Right ±85° Up/Down ±85°	Remote Control.....	Multi-function remote control included
PC Interface.....	RGB analog or digital, 0.7v peak to peak		
Video Sync.....	TTL positive or negative		
Display Mode.....	TV, A/V, VGA, SVGA, XGA, SXGA		
Frequency.....	(H) 31.5-80kHz (V) 56-75 Hz		
Signal Connectors.....	A/V, S-Video, "F" connector for TV, D-sub 15-pin		

Rev. 2/1/12

5" High Resolution TFT Color LCD Monitor

VM5LCD

Features

Our 5 inch high resolution TFT flat screen LCD monitor offers convenient on-screen display controls located on the front panel; including controls for brightness, contrast, hue, color, vertical/horizontal positioning and volume. It also features audio with front mounted speakers and input signal detection provides for easy connection. 12VDC power supply and A/V cable are included. 1 year warranty.



Specifications

Screen Size.....	5"	Audio Input.....	2 RCA
Aspect Ratio.....	4:3	Power Supply.....	12VDC
Resolution/Scan.....	640 x 480	Dimensions.....	6.5" (W) x 4.5 (H)
Brightness.....	350 cd/m2	Weight.....	1 lb.
Contrast Ratio.....	250:1	Included Accessories.....	Power supply, A/V cable
Inputs.....	1 S video, 2 RCA	Base.....	2"

Rev. 10/10/11

10" High Resolution TFT Color LCD VGA Monitor

VESA COMPATIBLE

PICTURE IN PICTURE

REMOTE CONTROL

VM10LCD



Features

- Professional TFT LCD for surveillance with multiple connections
- Picture-In-Picture feature that allows multi-picture display (in VGA mode)
- High brightness level and contrast ratio with super wide viewing angle
- Built-in 3D comb filter and 3D de-interlace for display picture performance
- Fast response time and refresh rate
- Multi-language support
- Input signal detection provides easy connection
- VESA compatible
- 1 year warranty

Specifications

Panel Size	10.4"
Aspect Ratio	4:3
Resolution/Scan	640 x 480
Brightness.....	350 cd/m2
Contract Ratio.....	300:1
Viewing Angle (H/V).....	Left 70° / Right 70° / Up 40° / Down 70°
Response Time.....	6ms (Typ.)
Sync. Format	NTSC / PAL
Frequency (Horizontal).....	PC: 31.5K
Frequency (Vertical)	PC: 60Hz - 75Hz, Video: 50 / 60Hz
Video Interface	D-SUB 15IN x 1, Video In x 2 (BNC), Video Out x 2 (BNC), S-Video In x 1
Audio Interface	In x 2, Audio Out x 2, PC-Audio In x 1
Input Power	DC In x 1
Termination	75 Ohm (Auto Termination)
Built-In Speakers	Yes (2pcs)
Front Panel Button.....	Power, Source, Up, Down, Menu, Auto
OSD Language.....	Multi Language
VESA Mounting	VESA 75mm x 75mm
Power Consumption	17.2W
Power Supply	12VDC
Operating Temperature.....	14° F - 122° F
Humidity.....	20% - 80%
Weight (N.W. / G.W.)	4 lbs. / 6.4 lbs.
Dimensions.....	10.3" (W) x 8.8" (H) x 2.5" (D)
Included in Package	Power cord, user manual, remote control

22" Touch Screen LCD Monitor

VESA COMPATIBLE

VGA/DVI INPUTS

16:10 WIDE SCREEN

VM22TSLCD



Features

- 1680 x 1050 high resolution under 16:10 aspect ratio with wide angle view
- Pelco-P/D protocol speed dome support
- Embedded PIP and Side-By-Side Scale Modes
- State-of-the-art 3D Color Comb Filter and 3D de-interlace technology
- Non-linear scaling ratio function support
- Adaptive 3D noise reduction
- Fast refresh rate and response time avoids lag effect
- Selectable 6500° K and 9300° K color temperature settings
- NTSC / PAL Video system support
- Built-in Key Lock feature for easy management
- 75 Ohm Auto Termination
- Built-in speaker for crystal clear audio
- 100mm x 100mm VESA mounting standard
- User-friendly GUI control CCTV system via touch panel
- 4:3 aspect ratio display for normal video with GUI
- Support mode for left-handed users
- Two RS-485 controls
- DVR and Matrix control support
- PC control by RS232 interface (driver required)
- Energy-saving light sensor detection
- 1 year warranty

Specifications

Button Controls.....	Power: On/Off switcher. Menu: LCD OSD LEFT: OSD item / value change Right: OSD item / value change. Auto: VGA / DVI auto adjustment Source: AV1 / AV2 / DVI / VGA / S-video select	Input/Output Impedance.....	75 Ohm
Display Resolution.....	1680 x 1050	Operating System.....	525 lines, 60 fields /sec.; 625 lines, 50 fields /sec.
Active Area	18.3" (H) x 11.44" (V)	VGA/DVI Input.....	15 pin D-SUB connector x 1 1 / DVI-D connector x 1
Dot Pitch	0.27675 x 0.27675mm	Video Input/Output.....	BNC x 2 / BNC x 2 Looping output Auto termination
LCD Profile Ration.....	16:10	Audio Input (L/R)	Ear phone x 3
Display Color	16.7M colors (RGB 8-bit data)	S-Video.....	4-pin DIN connector input x 1
Color Gamut	75% typ., NTSC coverage	Touch Panel.....	5 lines
Brightness (Central).....	250 cd/m2	COM Port.....	D-SUB 9 COM port x 1 for PC drive touch panel
Contrast Ratio.....	1000 : 1 typ.	RS-485	RJ11 x 2
Viewing Angle	170(H) : 160 (V)	Speaker	1W + 1W
Response Time.....	5ms	Power Consumption	55W
Power Supply	12VDC / 5A	Weight	N.W. / G.W.: 18.8 lbs. / 22.7 lbs.
Input Signal.....	1Vp-p composite video	Dimensions.....	19.95" (W) x 8.86" (D) x 14.74" (H)
		Operating Temperature.....	14° F - 122° F
		Storage Temperature.....	-4° F - 140° F

17" or 19" Color LCD Monitors with VGA Input

VESA COMPATIBLE

ON SCREEN MENU

VGA/DVI INPUTS

VGA17LCD 17" monitor
VGA19LCD 19" monitor

Features

- DB15 VGA input works with most DVRs and computers
- Zoom and shrink scaling
- Integrated 8-bit triple-channel ADC/PLL
- Built-in internal amplifier and speakers
- 1280 x 1024 SVGA support for computer input
- Supports multiple language selections
- 2D comb filter and 2D de-interlace
- Desktop mount is removable to expose VESA 100 mounting holes
- Full OSD control of all monitor functions
- 1 year warranty



Specifications

	VGA17LCD	VGA19LCD
Display Resolution (Panel)	1280 x 1024 @ 75Hz	1280 x 1024 @ 75Hz
Active Area	337.920mm (H) x 270.336mm (V)	376.32mm (H) x 301.056mm (V)
Pixel Pitch	0.264mm	0.294mm
LCD Profile Ratio	5.4	5.4
Display Color	16.7 million colors	16.7 million colors
Brightness (Central)	300 cd/m2 (typ.)	300 cd/m2 (typ.)
Contrast Ratio	800:1 (typ.)	1000:1 (typ.)
Viewing Angle	Left 80°/Right 80°/Up 80°/Down 80°	Left 85°/Right 85°/Up 85°/Down 85°
Response Time	5ms (typ.)	5ms (typ.)
VGA Input	15pin D-SUB connector x 1	15pin D-SUB connector x 1
Audio Input	3.5mm stereo jack	3.5mm stereo jack
Speaker	1W + 1W	1W + 1W
Power Consumption	35 Watts	35 Watts
Operating Temperature	14° F - 122° F	14° F - 122° F
Storage Temperature	-4° F - 140° F	-4° F - 140° F
Power Supply	12VDC (power supply included)	12VDC (power supply included)
Dimensions	16.7" (H) x 16.4" (W) x 6.1" (D)	17.9" (H) x 17.8" (W) x 6.1" (D)
Weight	8.4 lbs.	10.1 lbs.

Optional Mounting Accessories Fits All VESA Compatible LCD Monitors

- Supports LCD monitors up to 17 lbs.
- Mates to both 75 & 100mm VESA hole patterns
- Mounting hardware and adjustment tool included
- Allows for 160 degree horizontal and 100 degree vertical adjustment of your LCD monitor



LCDVLW2

10" extension arm for additional versatility



LCDVLW1

VM901B 9" BW high resolution monitor
VM1401B 14" BW high resolution monitor



- 800 line resolution
- Up front controls
- Hi resolution display
- LED power light
- Video input/output looping with switchable 75 Ohm termination
- Dimensions (VM901B) 9.25"(L) x 9"(W) x 10"(H)
- Weight (VM901B) 12 lbs.
- Dimensions (VM1401B) 12.25"(L) x 14"(W) x 12.6"(H)
- Weight (VM1401B) 21 lbs.
- 1 year warranty

Rev. 10/6/11

VM905C 9" Multi-voltage color monitor



- 500 TV lines resolution
- 9" color flat tube
- NTSC/PAL system auto switchable
- With Y/C, composite video input
- Wide range power source (90VAC-260VAC)
- High performance
- Dual comb-filter
- Discrete front controls
- Operating Temperature 14° F - 122° F
- Dimensions 8.66"(W) x 8.78"(H) x 11.26"(D)
- Weight 15.4 lbs.
- 1 year warranty

Rev. 10/6/11

VMS2 4" Portable CCTV installation & test monitor



- Resolution 480 x 234
- Brightness 350cd, Contrast ratio: 250:1
- Input video signal 1.0Vp-p (sync., negative) termination 75 Ohm
- View angle L/R ±45° U/D:10°/30°
- Audio input 30 mVp-p - 100 mVp-p
- Audio output 0.5 watts max
- Charging time 8 hours charging time, 4 hours operating time
- Video/Audio connector RCA W/BNC plug adapter
- Power consumption 4.5 watts
- Rechargeable battery 12V.1.1AH
- Power supply 12VDC (power supply included)
- Dimensions 6" (W) x 5.1" (H) x 3" (D)
- Weight 4.3 lbs.
- 1 year warranty

Extra battery available

BVMS2

Rev. 10/7/11

VMS4 2.4" LCD test monitor

Sunshield built into leather carry case with wrist and shoulder straps (included)



- TFT color LCD screen
- 480 x 243 resolution
- Brightness 250 nit (typical), Contrast ratio: 250:1
- Color system NTSC / PAL Dual System Support (automatically switches)
- Input video signal 1.0 Vp-p / 75 Ohm
- View Angle U/D/L/R 10/30/40/40 minimum viewing angle
- Video input / Output Terminal: BNC, auto termination
- Power Voltage 7 - 12VDC in
- Power Consumption 140mA @ 12VDC
- Operating Temperature 32°F - 140°F
- Operating Humidity Max. 85% RH
- Storage Humidity Max. 85% RH
- Battery: Requires 6 AA batteries (included)
- Power Supply 12VDC external (power supply not included)
- Dimensions 5.24" (W) x 2.8" (H) x 1.46" (D)
- Weight 6.24 oz. (without batteries)
- 1 year warranty

Rev. 10/7/11

HDFO HDcctv Miniature Fiber-Optic 3G SDI Extender

The miniature 3G SDI extender is an optimized and high-end level solution designed for transmission of multi-rate 3G SDI, HD-SDI video data over both single-mode, multi-mode 1 fiber-optic cable. Supporting the new 1080p, 3Gbps SDI format, it converts and transports one(1) channel SMPTE 424M, 3G SDI, SMPTE-292M HD or SMPTE-295M serial digital video signal perfectly over long distance right after its transmitter receives the input signal. Supports up to 6 miles@3G.



Specifications

Video Input 1ch / 3G-SDI, HD-SDI (BNC)
 Video Output..... 1ch / 3G-SDI, HD-SDI (BNC)
 Input Resolution..... SMPTE-424M 3G-SDI, SMPTE-292M HD-SDI, SMPTE-259M SDI
 Output Resolution..... SMPTE-424M 3G-SDI, SMPTE-292M HD-SDI, SMPTE-259M SDI
 Distance..... 6 Miles @ 3G-SDI
 Power Consumption Max. 1W
 Power Supply 5VDC 1.5A ± 10% (power supply included)
 Operating Temperature/
 Humidity..... -4° F - 158° F / 0% - 95% RH, non-condensing
 Dimensions..... .76" (H) x .76" (W) x 2" (L)
 Warranty 2 years

HDS1T4 HDcctv HD-SDI 4 Channel Splitter

- Format: HDcctv / SMPTE 292M (HD-SDI)
- Return Loss - Input: Typ 21dB (5MHz to 3GHz)
- Return Loss - Output: Typ 19dB (5MHz to 1.485GHz)
- Typ 15dB (1.485MHz to 2.97GHz)
- 2 year warranty



Specifications

Video Input 1ch / HD-SDI (BNC)
 Video Output..... 4ch / HD-SDI (BNC)
 Input Resolution..... 1920x1080p
 (60/59.94/50/30/29.97/25)Hz
 1920x1080i (60/59.94/50)Hz
 1280x720p (60/59.94/50)Hz
 Output Resolution..... 1920x1080p
 (60/59.94/50/30/29.97/25)Hz
 1920x1080i (60/59.94/50)Hz
 1280x720p (60/59.94/50)Hz
 Power Supply 5VDC 1A ± 10%
 (power supply included)
 Operating Temperature/
 Humidity..... 14° F - 140° F / 30% - 80% RH

HDR HDcctv HD-SDI Repeater

- SMPTE 292M compatible
- Up to 492' transmission distance using RG59 Coaxial cable
- Supported HD-SDI video out
- 2 year warranty



Specifications

Video Input 1ch / HD-SDI (BNC)
 Video Output..... 1ch / HD-SDI (BNC)
 Input Resolution..... 1920x1080p
 (60/59.94/50/30/29.97/25)Hz
 1920x1080i (60/59.94/50)Hz
 1280x720p (60/59.94/50)Hz
 Output Resolution..... 1920x1080p
 (60/59.94/50/30/29.97/25)Hz
 1920x1080i (60/59.94/50)Hz
 1280x720p (60/59.94/50)Hz
 Power Supply 12VDC 1A ± 10%
 (power supply not included)
 Power Consumption Max 1W
 Operating Temperature/
 Humidity..... 14° F - 140° F / 30% - 80% RH

PSQ8 Rack Mount Power Sequencer & Conditioner



rear panel



Features

- 2x digital filter/4x analog filter
Power up and power down 3 outlet groups in a delayed sequence
- Power up in 3 groups: 2x Digital filtered
4x Analog filtered
2x High-Power filtered
- Power down reverses sequence
- RFI filtering with multi-stage PL filter
- 2 unswitched outlets on front panel
- Circuit breaker
- Multiple units may be linked to handle higher currents
- Four pairs of switched outlets on rear panel
- Front panel digital LED meter displays incoming AC line voltage
- A single, super bright, retractable, long-life, low-heat LED light with high/low/off switch for rack illumination

Specifications

- Current rating: 15A
- Operating voltage: 90 to 140 VAC
- Overvoltage shutdown: 140 VAC
- Spike protection modes: Line to neutral, zero ground leakage
- Delay interval: 5 seconds
- Response time: 1 nanosecond
- Maximum surge current: 6,500A
- Built-in power cord
- Dimensions: 1.75" (H) x 19" (W) x 7.5" (D)
- 1 year warranty

Rev. 11/14/11

PCN8 Rack Mount Power Conditioner



rear panel



Features

- Protects from power spikes and surges
- 8 AC switched outlets
- RFI/EMI interference filter
- 8 AC switched outlets on rear panel and one unswitched AC outlet on front panel
- Circuit breaker
- Dual retractable rack illuminators
- Front panel LED meter displays incoming AC line voltage

Specifications

- Current rating: 15A
- Operating voltage: 90 to 140 VAC
- Overvoltage shutdown: 140 VAC
- Spike protection modes: Line to neutral, zero ground leakage
- Response time: 1 nanosecond
- Maximum surge current: 6,500A
- Built-in power cord
- Dimensions: 1.75" (H) x 19" (W) x 7.5" (D)
- 1 year warranty

Rev. 11/14/11

VIDDIST 1 input to 4 output video distribution amplifier

- 1 video input to 4 video outputs
- Power: 12VDC (power supply included)
- Operates with Color or BW signals

BNC75 (Optional)

- 75 Ohm resistor in a BNC connector
- Terminates unused outputs of a distribution amplifier (VIDDIST)
- Can be used with any video equipment requiring a 75 Ohm BNC termination
- 2 year warranty



VIDAMP 1 input to 1 output video distribution amplifier

- 1 video input to 1 video output
- 10dB video gain compensation, amplification and HF compensation
- Sharpness and brightness adjustment works perfectly with DVR
- Transmission range: 3,200' (RG59 coaxial cable)
- Power: 12VDC (power supply included)
- 2 year warranty



VID4AMP 4 input to 4 output video distribution amplifier

- 4 video input to 4 video output
- 10dB video gain compensation, amplification and HF compensation
- Sharpness and brightness adjustment works perfectly with DVR
- Transmission range: 3,200' (RG59 coaxial cable)
- Power: 12VDC (power supply included)
- 2 year warranty



VIDDVR Coaxial Balun for DVR

- BNC male to BNC female with mini cable 11.8"
- Gives DVR immunity from interference
- Built-in highly balanced mode of video transmission which is immune to interference from sources of noise: data signals, other video signals, nearby power, ringing telephones, fluorescent lights, transformers and more
- Perfect for long cable runs or weak / strong signals
- 2 year warranty



HDMI4SWT 4 input to 1 output - HDMI switcher

- Extends Range of HDMI Compliant Devices
- Switch easily between any 4 HDMI sources by remote control or front panel button
- Extends range of HDMI compliant device by equalizing and reclocking the HDMI signal
- Supports high-resolution inputs: PC: VGA, SVGA, XGA, SXGA, UXGA, WUXGA (1920 x 1200)
HDTV: 480i, 576i, 480p, 576p, 720p, 1080i and 1080p @60Hz
- Supports both audio and video signals
- HDMI 1.3 compliant/ HDCP pass-through
- IR Remote control & 5VDC power supply included, 2 year warranty



IPPOEINJ1295 POE Injector-12.95W

- Compatible with IEEE 802.3af (12.95W) POE standard, PSE/PD
- Injector provides DC48V power over RJ45 Ethernet cable to device with Ethernet port
- Supports POE power up to 12.95W for POE port
- Support 10/100/1000 BASE-T transmission rate
- Power input LED indicators
- Distance up to 325', for use with IPOESPL1295 Splitter
- Power cord included, 2 year warranty



IPPOESPL1295 POE Splitter - 12.95W

- Compatible with IEEE 802.3af (12.95W) POE standard, PSE/PD
- Splits the DC48V power over RJ45 Ethernet cable into DC 5V/12V output
- Support 10/100/1000 BASE-T
- Two adjustable output voltage options (5V/1.8A, 12V/1A) to fit various devices BASE-T transmission rate
- Power input LED indicators
- Distance up to 325'
- 2 year warranty



IPPOEINJ25 POE Injector-25W

- Compatible with IEEE 802.3af (25W) Gigabit high power over Ethernet pre-standard, PSE/PD
- Injector provides DC56V power over RJ45 Ethernet cable to device with Ethernet port
- Supports POE power up to 25W for POE port
- Support 10/100/1000 BASE-T transmission rate
- Power input LED indicators
- Distance up to 325', for use with IPPOESPL25 Splitter
- Power cord included, 2 year warranty



IPPOESPL25 POE Splitter -25W

- Compatible with IEEE 802.3 at (25W)Gigabit high power over Ethernet pre-standard, PSE/PD
- Splits the DC56V power over RJ45 Ethernet cable into DC 5V/12V output
- Support 10/100/1000 BASE-T
- Two adjustable output voltage options (5V/3.6A, 12V/1.8A) to fit various devices transmission rate
- Power input LED indicators
- Distance up to 325'
- 2 year warranty



IPPOERPT POE/LAN Repeater

- Extends both power and data up to 1000'
- No external power required
- Compatible IEEE 802.3af POE standard
- Support 10/100/1000 BASE-T transmission rate
- Built-in LED status indication
- Plug and play for easy installation
- 2 year warranty



VIDCAT2 Power & video over CAT-5E

- Speco Technologies CAT-5E conversion kit, allows transmission of video and power over CAT-5E cable. The kit includes a transmitter & receiver
- Allows video and power over CAT-5E cable up to 600'
- Works with any baseband signal (not just cameras)
- Can be used with all Speco Technologies BW & Color cameras
- Ideal for new construction and retrofits
- Compatible with current TIA-568 & TIA-570 structured CAT-5 cabling standards
- Connects to CAT-5E through the use of a 6-pin terminal connector
- 12VDC (power supply not included)
- 2 year warranty



VIDUTP Passive baluns

- Allows the use of UTP CAT-5E cabling. More flexible security and surveillance cabling for quicker installations
- Allows up to 1900' for BW, 1000' for color, via CAT-5 UTP
- Screw terminals for easy connection
- Compact design
- Sold in pairs
- 2 year warranty



VID2412CONV Converts 24VAC to 12VDC

- Operate your 24 Volt AC cameras on a variety of voltages
- Regulated 12 Volt DC output @ 500 mA
- Accepts 15 to 26 Volts AC and converts it to 12 Volts DC
- Accepts 15 to 28 Volts DC and converts it to 12 Volts DC
- Voltage input via 2-pin terminal block
- 12 Volt DC output via 2.4 coaxial female power connect
- Mechanical: Converter is 2.5" (L) x 1.2" (W) x .9" (H); Input and output cables are 5" each
- 2 year warranty



DCPLGBLOK DC plug to terminal block

- DC plug (Male) to removable terminal block
- Small size to fit in tight spaces
- 2.1mm DC Plug
- Sold in packs of 10
- 2 year warranty



VIDGL/UTPGL Ground loop isolator built-in video balun

- BNC male to 2 pin terminal block (UTPGL) or BNC female to BNC male with mini cable on both sides (VIDGL)
- Built-in video BALUN transmits a full motion mono chrome video signal up to 1,900', color video signal up to 980'
- Eliminate coaxial cable
- Built-in TVS (Transient Voltage Suppressors) for surge protection
- UTPGL is sold in pairs (UTPGLPR)
- 2 year warranty

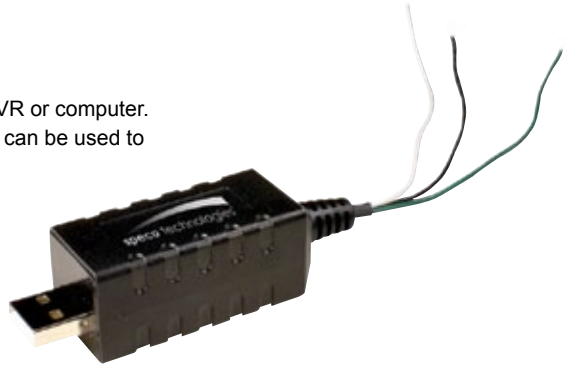


UTPGL shown

USBPL1 USB power loss detector

The USBPL1 detects the power output of any active USB port on a DVR or computer. If the power is interrupted, the output status of the leads changes and can be used to trigger an alarm or other notification.

- Operating Voltage: 5VDC as supplied by USB port
- Pick-Up Voltage: 3.75VDC
- Operating Current: 28.1mA (140mW)
- Dimensions: 3" (W) x 0.9" (H) x 0.9" (D)
- Wire Length: 5.9"
- 2 year warranty



RFM1A Channel 3/4 modulator

- Converts a composite video signal to an NTSC RF signal
- Set for channel 3-4
- Connect a video camera to a TV antenna for security surveillance
- Connect a home satellite receiver to a standard TV antenna
- Inputs: RCA, Audio and Video
- Outputs: F connector - UL listed
- Dimensions: 3.25" (L) x 4.5" (W) x 1.25" (H)
- Built-in power cord
- 2 year warranty



UTP4A Active video/audio/data transmission

- Extended Range For CAT-5E Transmission
- Active Video/Audio/Data Twisted Pair Transmission
- Transmit video, audio and data signal (RS422, RS485)
- Three position range switch for gain select on transmitter
- Five position activation switch on receiver, brightness adjustment, two video outputs
- Built-in transient protection and ground lifting
- Power supply included
- 2 year warranty



UTP4AR 4 channel active receiver

- Built-in 4 port active receivers
- Built-in highly balanced mode of video transmission for extra interference immunity
- Extended range for UTP transmission
- 12VDC (power supply included)
- 2 year warranty



UTP16P 16 port passive transceiver HUB

- Up to 3,200' range
- 16 port passive transceivers in 1U 19" rack mounting panel
- Passive transmitter hub, use with active receiver at a distance up to 3,200'
- Passive, no power required
- Built-in highly balanced mode of video transmission for extra interference immunity
- 2 year warranty



UTP16AR 16 port active transceiver HUB

- Up to 3,200' range
- 16 port active receivers in 1U 19" rack mounting panel
- Active receiver hub, use with active transmitter at a distance up to 3,200'
- Highly balanced mode of video transmission for extra interference immunity
- Built-in transient protection and ground lifting
- Extended range for UTP Transmission for extra interference immunity
- 12VDC (power supply included)
- 2 year warranty



UTP4P 4 channel passive video receiver

- 4 x BNC female to 1 x RJ45 female and 8 pin terminal block
- Four passive transceivers in one product
- RJ45 and push pin terminal inputs/ outputs
- 2 year warranty



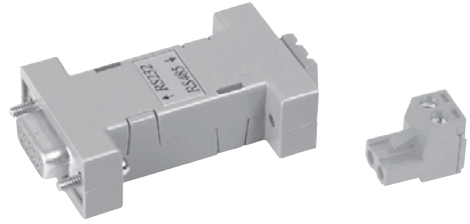
UTPPTAIL Video transceiver 10" mini coax BNC cable

- Compact size, perfect to connect with an image processor with multiple BNC connections such as a multiplexer, quad, DVR, etc.
- BNC male to terminal block
- Weather resistant, IP65
- Full balun operation
- 2 year warranty



RS232485C RS232 To RS485 converter

- RS232 DB9 serial female converting Terminal Block for RS485 - Data in/output
- Two wire, different signals, half duplex
- Transmission range up to 3,900'
- Passive operation
- Auto sensing baud rate, speeds up to 115,200 baud over a distance of 3,900'
- Units connected together in RS-485 multidrop operation
- 2 year warranty



KVMPC2 VGA/keyboard/mouse CAT5 extender

- Extend VGA and keyboard mouse over 2 CAT5 UTP cables (instead of VGA cable and keyboard mouse cable)
- Allows extension for transmission range of up to 300'
- Includes local and remote unit
- Transmission up to 300'
- PS/2 interface
- No power required
- 2 year warranty



KMUSB Keyboard/mouse CAT5 extender

- Extend USB keyboard and mouse via one CAT5 cable
- Allows extension for transmission range of up to 300'
- Includes local and remote unit (local unit – PC side: USB to RJ45, remote unit (keyboard mouse side): RJ45 to PS/2)
- Transmission range up to 300'
- USB interface
- No power required
- 2 year warranty



VGA135 CAT5/VGA extender

- Includes 2 units: transmitter and receiver
- Transmitter with built-in virtual DDC to avoid improper setting for resolution & frequency and built-in sync mode selection for signal stability
- Receiver has built-in sync mode selection for signal stability
- Supports up to 1280 x 1024 pixels
- Extend transmission range to over 440' via standard 4 pairs CAT5 UTP/STP cable instead of VGA cable
- No power required
- Perfect for classroom, lecture halls, video information displays, etc.
- 2 year warranty



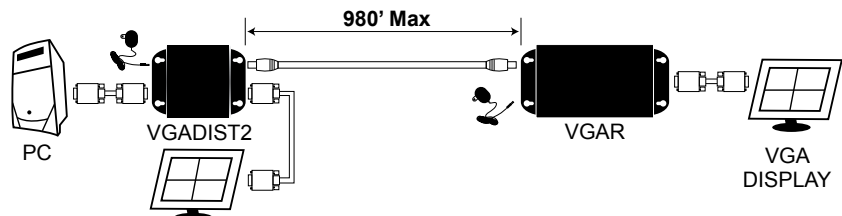
VGADISTK2 CAT5/VGA kit

- Dual output: VGA loop output for local, plus CAT5 RJ45 output for remote side
- Use of CAT5 cable instead of VGA cable
- Long range transmission of up to 980' (max).
- Built-in contrast, brightness adjustment at VGAR receiver
- Supports up to 1600 x 1200 @ 85Hz



KIT INCLUDES:

- One VGADIST2 transmitter
- One VGAR receiver
- Two power supplies
- 2 year warranty



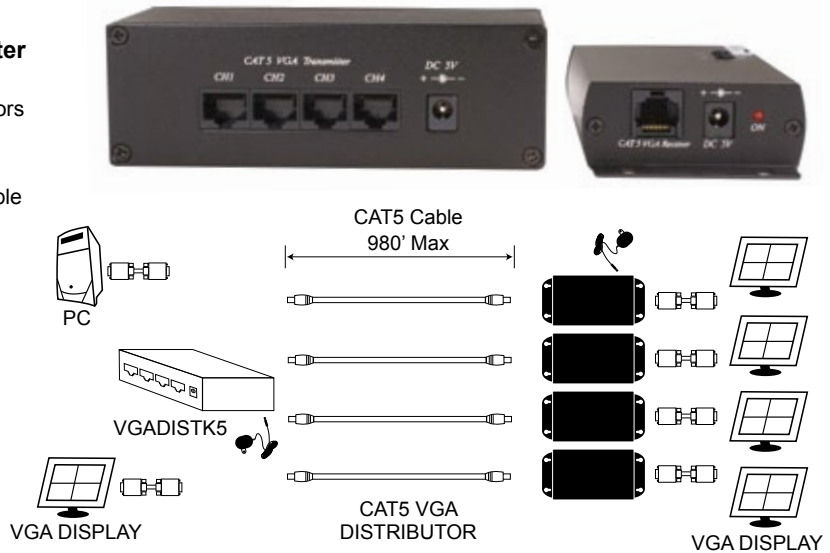
VGADISTK5

CAT5/VGA kit, 1 input to 5 output splitter

- Dual output: 1 VGA loop output for local, plus 4 x CAT5 RJ45 outputs to remote monitors
- Up to 4 VGAR receivers for each remote monitor with VGA input (order separately)
- Allows use of CAT5 cable instead of VGA cable
- Power supply included
- Long range transmission of up to 980' (max).
- Built-in contrast, brightness adjustment at VGAR receiver
- Supports up to 1600 x 1200 @85Hz

KIT INCLUDES:

- One VGADIST2 transmitter
- One VGAR receiver
- Two power supplies
- 2 year warranty



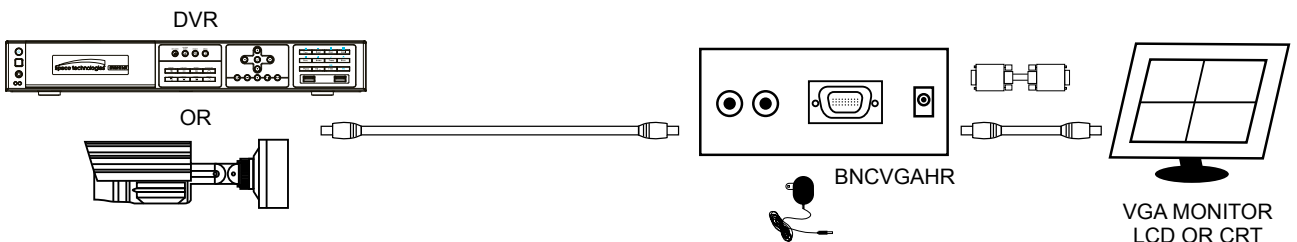
VGAR CAT5 long range VGA receiver

- VGA receiver for VGADIST5 or VGADISTK2 for remote VGA Display Equipment
- Built-in contrast, brightness adjustment
- Supports up to 1600 x 1200 @85Hz
- Long run solution
- Power supply included
- 2 year warranty



BNCVGAHR High resolution video to VGA converter

- Input: allows composite video output to be viewed on a VGA monitor (CRT or LCD)
- Dual output: BNC x 1 for TV monitor and DB15 x 1 for VGA monitor
- High resolution VGA display up to 1280 x 1024 @60Hz
- Frequency output: 60Hz to 85Hz
- OSD video control
- On screen display function: Brightness, Contrast, Color, Tint, Features, Resolution
- OSD video control
- Compact size and low working temperature
- Built-in Auto Gain control for picture quality
- Supports NTSA & PAL video systems
- Power supply included
- 2 year warranty



VGABNC VGA To BNC converter

- Connects VGA output to existing TV or CRT monitor
- Video standards: NTSC/NTSC-EIAJ/PAL/PAL, - M/PAL-N/SECAM
- Resolutions supported: 640x480 (up to 85Hz), 800x600 (up to 85Hz) 1024x768 (up to 75Hz)
- Dual output ports: Composite Video (BNC connector) • VGA (DB15)
- Image controls: horizontal and vertical size brightness, contrast, hue, saturation, sharpness
- On-screen display background, simple and quick to install
- 5VDC (power supply included)
- 2 year warranty

PC/Mac
compatible



VGAHDMI VGA & stereo/digital audio to HDMI

- VGA & stereo/digital audio to HDMI converter with local loop VGA output
- Supports HDMI & DVI output mode
- Encodes analog stereo audio or digital audio onto the video signal for HDMI audio and video
- Supports PC resolution up to 1920 x 1080
- 5VDC (power supply included)
- 2 year warranty



COMHDMI Component video to HDMI converter

- Component Video to HDMI Converter with local loop component input
- Convert component video (YPbPr) & stereo/digital (SPDIF) audio to HDMI display
- Built-in local component video loop output with stereo/digital (SPDIF) audio
- Encodes analog stereo audio or digital audio onto the video signal for HDMI audio and video
- Supports HDTV resolution up to 1080p
- 5VDC (power supply included)
- 2 year warranty



UTPAUDIO Audio CAT5 extender

- Ground Loop Device • Gold-plated RCA female to RJ45
- Sold & used in pairs via one CAT5 UTP cable to send audio signal of up to 1 mile
- 20Hz to 20kHz bandwidth
- Available for 75 – 120 Ohm cable
- High performance to eliminate audio ground loop problem
- No power required
- 2 year warranty



STRXTNDR Stereo/mini stereo Audio CAT5 extender

- Dual gold-plated RCA female + 3.5mm mini jack to RJ45
- Stereo or mini-stereo selector switch
- No external power required
- Sold and used in pairs via CAT5 UTP cable
- Can send audio signal up to 2000'
- 20Hz to 20kHz bandwidth
- High performance to eliminate audio ground loop
- 2 year warranty



CAMMIC

- Hi Impedance Line Level Universal Mic
- Add-on mini microphone for all systems
- High sensitivity microphone with 1.5' power/audio cable
- Line level output
- Easy to install and ideal for all security surveillance audio recording applications
- 12VDC (power supply not included)
- 2 year warranty



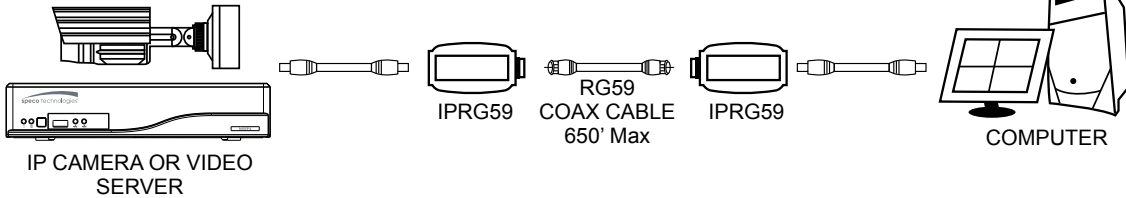
AIE IR Emitter

- For transmitting IR commands to source units
- For use with compatible devices that contain IR pass through functionality
- 2 year warranty



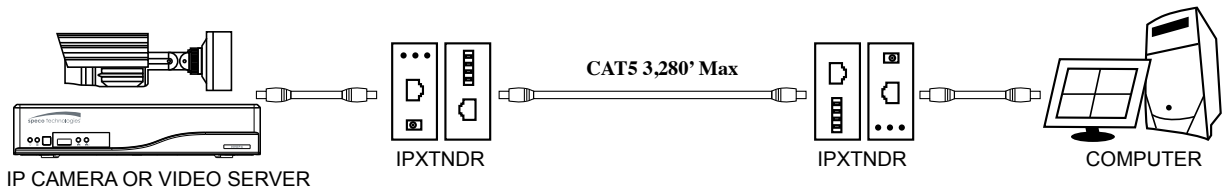
IPRG59 IP converter for RG59 coax

- Send IP camera signal over existing coaxial cable
- Exceeds 802.3 10 Base T (10 mbps), isolating the receiver from the transmitted signal
- Transmission up to 600'
- 2 year warranty



IPXTNDR CAT5/VGA extender

- Includes transmitter & receiver
- Send IP camera signal over existing CAT5 cable
- Exceeds 802.3 10BaseT NEXT specification, isolating the receiver from the transmission signal
- Transmission up to 3,280' (max.)
- Power supplies included
- 2 year warranty



COMXTNDR Composite video & audio CAT5 extender

- Includes transmitter & receiver
- No external power required
- Sold and used in pairs via one CAT5 UTP cable
- Can send video and stereo audio up to 1000'
- Two-way audio transmission and one-way video transmission
- 3 RCA female to RJ45 female
- 2 year warranty



DVIXTNR DVI CAT5 extender

- 1 in/1 out
- Includes transmitter and receiver
- Used in pairs via one CAT5/5e/6 cable to send DVI signal
- No external power required
- Transmission distance:
- 1024x768: 225' • 1920x1200: 160'
- 2 year warranty



SURGE PROTECTORS

SPVP Video & power surge protector

- Two-stage protection: 130V, AC/DC12V
- 2-pin terminal + BNC male to 2-pin terminal + BNC female
- Max power input:
- AC 40V Max, DC 56V Max
- Max current up to 2Amp
- 2 year warranty



SPUTVD UTP data surge protector terminal connector

- Terminal connector to terminal connector
- Perfect for video or data signal protection
- 2 year warranty



SPIP Network surge protector

- RJ45 Jack to RJ45 Jack
- Four pair protection
- Perfect for protecting IP camera, network, PC modem, server, etc.
- Protects UTP twisted pair products or any computer equipment utilizing a network cable
- 2 year warranty



SPPOE POE surge protector

- RJ45 Jack to RJ45 Jack
- Power and signal line protection
- 10/100 BASE-T CAT5/5e compatible
- 802.3af POE compatible
- No external power required
- 2 year warranty



SPCOAX Coaxial video surge protector

- BNC male to BNC female
- Dimensions: 3.19" (L) x 1" (W) x 1" (H)
- 2 year warranty



MVTBNCSCR Video transceiver BNC to screw terminal

- BNC (male) to screw terminal for easy connection
- Compact size. Multiple units could be mounted behind multiplexer, quad, DVR, etc.
- Sold in packs of 10
- Also available with 10cm mini coax cable: **MVTBNCSCRPTL** (sold individually)
- 2 year warranty



DFM Dome flush mount kit

The DFM Dome Flush Mount Kit allows select Speco Technologies dome cameras to be flush mounted into walls and ceilings. Give your customers the designer look they desire.

- Back box easily flush mounts into hollow walls and ceilings.
- Flush mount box is secured with the use of four retaining clamps.
- Perfect for existing construction.
- Preconfigured to fit several types of Speco tamperproof and indoor dome cameras.
- Contains two different size Chameleon™ decorator rings for a finished look.
- Rings can be painted to match any décor before installation.
- Built-in loop allows the installer to secure the DFM with a safety strap.
- Installation template included.

Compatible with the following Speco Technologies dome camera models:

HT7246iHR	CVC6246iHR series
HT7247iHR	CVC6146SCS series
HT7248FFi	VL648IR series
HT7250iHR	CVC648IR series



VCH400HBMT Weather resistant heavy duty camera housing

- Operates on 24VAC
- Ivory Housing Color
- Rust proof hardware
- Housing with heater, blower, & bracket
- Housing dimensions: 15.25" (L) x 5.5" (L) x 4" (H)
- Bracket dimensions: 11 1/2" (L) x 3 1/4" (L) x 4" (H)
- Use PSW4 power supply (power supply not included)
- 1 year warranty

Optional Accessory



PSW4 24VAC
Power Supply



VCH400MT Housing & bracket only



LB1 16 Gauge Steel Lock Box

- For desktop DVR or VCR units measuring up to 21" (W) x 21" (L) x 8" (H)
- Extra security for DVRs/VCRs
- Cooling fan
- Includes power supply and cord
- 1 year warranty



Model	Type	Image	Relevant Models
CVCJBD	Small Round Junction Box		HT7246iHR, HT7247iHR, HT7248FFI, HT7250iHR
JB03TG,W	Large Round Junction Box		CVC5300DPVF, CVC5400DPVF, CVC5845DNN, CVC5945DNN, HTD8FFI, HTINTD8, HTINTD9, HTINTD10
INTWM,W	Wall Mount		CVC5300DPVF, CVC5400DPVF, CVC5845DNN, CVC5945DNN, CVC5735DNN, CVC5835DNN, CVC5935DNN, HT7246iHR, HT7247iHR, HT7250iHR, HT7248FFI, HTD8FFI, HTINTD8, HTINTD9, HTINTD10
INTPM,W	Pendant Mount		
INTJBS,W	Junction Box		CVC5100BPVF, CVC5200BPVF, CVC5815DNN, CVC5915DNN, HTINTB8, HTINTB9, HTINTB10, HTINTB8G, HTINTB10G, HT7048IRVF, HT7049IRVF, HT5100BPVFG, HT5200BPVFG, VL7038IRVF, VL7039IRVF
INTCM,W	Corner Pole Mount		CVC5100BPVF, CVC5200BPVF, CVC5815DNN, CVC5915DNN, CVC5715DNN, HTB11FFI, HTINTB8, HTINTB9, HTINTB10, HTINTB8G, HTINTB10G, HT5100BPVFG, HT5200BPVFG, HT7048IRVF, HT7049IRVF, VL7038IRVF, VL7039IRVF
CVCJBB,W	Bullet Round Junction Box		CVC5100BPVF, CVC5200BPVF, CVC5815DNN, CVC5915DNN, HTINTB8, HTINTB9, HTINTB10, HTINTB8G, HTINTB10G, HTB11FFI, HT5100BPVFG, HT5200BPVFG, OB1
CVCWM,W	Mount		CVC5725DNN, CVC5825DNN, CVC5925DNN
O2DFM1	Embedded Mount Bracket		OD8 ,O2DP7
OPTZDFM	Indoor Embedded Mount Bracket For Flush Type		OPTZ36XI
OPTZOH	Outdoor Housing With Fan & Heater & OPTZWM		OPTZ36XI
OPTZWM	Wall Mount Bracket, IP66		OPTZ36XI
OPTZCM	Corner Mount Adapter		OPTZ36XO or OPTZ36XI with OPTZWM
OPTZPM	Pole Mount Adapter		OPTZ36XI or OPTZ36XO with OPTZWM
O2PM	Pole Mount Adapter		O2D3
O2DFM2	Embedded Ceiling Mounts Bracket		O2D3
O2DWM1	Wall Mount Bracket		O2D3
O2CL	Ceiling Mount Bracket		O2D3
650WMTS, W	Wall Mount		HT650IRVFHQ, HT650PT10X, HT65010XS, VL650IRS, VL650IRVFS, WDRD3
650CMTS, W	Ceiling Mount		HT650IRVFHQ, HT650PT10X, HT65010XS, VL650IRS, VL650IRVFS, WDRD3
650CPS, W	Corner/Pole Mount		HT650IRVFHQ, HT650PT10X, HT65010XS, VL650IRS, VL650IRVFS, WDRD3
650JBMTS, W	Junction Box		HT650IRVFHQ, HT650PT10X, HT65010XS, VL650IRS, VL650IRVFS, WDRD3
DFM	Tile Ceiling Flush Mount		CVC6146SCS, CVC6146SCSFF, CVC6246iHR, CVC648IRHQ, CVC648IRVFHQ, HT7246iHR, HT7247iHR, HT7248FFI, HT7250iHR, VL648IR, VL648IRVF

TBAR / Wall / Ceiling Mounts

CSTTBAR

- All parts included to use as a T-Bar, Wall, Ceiling or Pedestal mount.
- Attaches to dropped ceilings
- 4" (L) x 1.5" (H)



CST175

- Heavy duty cast aluminum

Beige



10"L x 5"H

CST175A
Aluminum

CST115

- Black metal bracket
- 360° rotation
- Use with mini cameras
- Standard 1/4" thread
- 2.25" (H) x 1.75" (W)



6" Universal brackets in plastic or metal

CST125 black

CST125A almond

CST100

Plastic
6.375" (L) x 3.5" (H)



Metal
7" (L) x 1.75" (H)

CAMERA LENSES, CABLES, POWER SUPPLIES & ADAPTERS

We stock a complete line of lenses to fit all cameras. All lenses are CS mount unless specified.

Note: All CS lenses can be used on CS mount with adapter ring

CS VARIFOCAL LENSES

Model	Length	Aperture	Features	Connector
VF3.58	3.5-8mm	F1.4	Manual Iris	-
VF3.58DC	3.5-8mm	F1.4	DC Auto Iris	4 pin connector
VF2.812	2.8-12mm	F1.4	Manual Iris	-
VF2.812DC	2.8-12mm	F1.4	DC Auto Iris	4 pin connector
VF660DC	6-60mm	F1.6	DC Auto Iris	4 pin connector
VF5100DC	5-100mm	F1.8	DC Auto Iris	4 pin connector

CS FIXED LENSES

Model	Length	Aperture	Features	Connector
CL8	8mm	F1.3	No Iris	-
CL16	16mm	F1.6	No Iris	-
CSAR1	CS Mount Adapter Ring		-	-

MEGAPIXEL LENSES

Model	Length	Aperture	Features	Connector
VFMP2.2812	2.8-12mm		Manual Iris	-
VFMP2.2812DC	2.8-12mm		Auto Iris	-

LENS OPTIONS FOR COLOR & B/W BOARD CAMERAS

Model	Length
CLB2.2	2.2mm Board Camera Lens
CLB2.5	2.5mm Board Camera Lens
CLB2.9	2.9mm Board Camera Lens
CLB3.6	3.6mm Board Camera Lens
CLB4	4mm Board Camera Lens
CLB6	6mm Board Camera Lens
CLB8	8mm Board Camera Lens
CLB12	12mm Board Camera Lens
CLB16	16mm Board Camera Lens

POWER SUPPLIES

PSW3	24VAC Power Supply, 20 Volt Amps Terminal Connections
PSW4	24VAC Power Supply, 50 Volt Amps Terminal Connections
PSW5	12VDC Power Supply, 1000ma, 1 amp Center Positive

BNC Cables

RG59	RG59U Coaxial Cable
BB3	3' Cable (BNC Male To BNC Male)
BB6	6' Cable (BNC Male To BNC Male)
BB12	12' Cable (BNC Male To BNC Male)
BB25	25' Cable (BNC Male To BNC Male)
BB50	50' Cable (BNC Male To BNC Male)

CCTV POWER/VIDEO EXTENSION CABLES

Combines power & video signal in one multi-purpose cable

BNC TO RCA

CBL25	25' Power & Video Signal In One Cable
CBL50	50' Power & Video Signal In One Cable
CBL100	100' Power & Video Signal In One Cable
CBL150	150' power & video signal in one cable

BNC TO BNC

CBL25BB	25' Power & Video Signal In One Cable
CBL50BB	50' Power & Video Signal In One Cable
CBL100BB	100' Power & Video Signal In One Cable
CBL150BB	150' power & video signal in one cable

What is CCTV?

Closed Circuit Television is a group of cameras, monitors and accessory equipment that work together as a system and are interconnected by various types of cables.

What is the Purpose of CCTV?

It is a tool used to protect people, property, enhance safety, and improve productivity.

Are CCTV Systems Complicated?

For the most part, today's modern equipment is self-adjusting and has a long trouble-free lifespan. Packaged cameras (such as a bullet camera) are self-contained units that include the lens, mounting bracket, housing and power supply in a single box. CCTV has become a "plug & play" market.

Types of CCTV Cameras:

All are available in B/W and Color as well as normal and low light configurations

Board Camera:

Fully functional camera with a built-in lens on a Printed Circuit Board. These cameras are not in a housing. Useful for concealing and building into custom applications.

C/CS Cameras:

Refers to conventional type camera bodies that require the separate purchase of all options including lens, mounting bracket, housing, power supply, and heater/blower.

Dome Cameras:

Low profile, ceiling mounted self-contained camera package including lens, and power supply. Camera is adjustable within the housing for perfect aiming. Plug and play ease of installation.

Pinhole Camera:

Bullet or Board camera using a special lens that allows it to see out of a small (1/16th of an inch) opening. Useful for discreet and hidden applications as well as when a large depth of field is required.

Varifocal Camera:

A camera whose lens allows for the adjustment of the field of view. This camera can zoom in and out.

Waterproof Camera:

Bullet camera that can be placed underwater or in extremely damp/wet conditions where a normal Weather resistant camera might leak.

Common CCTV Terms:**Automatic Light Compensation (ALC):**

The cameras built-in ability to compensate for changes in scene lighting.

Aperture:

The opening in a lens that allows available light to enter the camera.

Auto White Balance (AWB):

Circuitry in a color camera that allows it to yield perfect color pictures in different types of lighting.

Automatic Gain Control (AGC):

Circuitry in a camera that allows it to improve performance in low light conditions.

Automatic Iris Lens (AI):

Type of lens where the aperture physically opens and closes to adjust the amount of light entering the camera. Available in "DC" and "Video" configurations to match your camera. Not required on cameras with electronic shutter systems.

Back Light Compensation (BLC):

Ability of a camera to balance the lighting in a scene with an extremely bright background such as sunlight.

Balun:

An impedance matching device that allows you to send video signals over UTP

BNC:

A type of video connector

C/CS Mount Lenses:

Type of lens used on a standard CCTV camera

CRT:

The picture tube in a monitor

CCD:

The device in a camera that "takes" the picture and converts it to Electronical signals.

Coaxial Cable:

Normally RG-59U or RG-6 in CCTV systems. This cable should have a copper center conductor and 95% copper shield for best performance.

Day/Night Camera:

A camera that displays color pictures in good lighting conditions, and automatically switches to B/W in low light conditions

Depth of Field:

The portion of a video picture that is in focus.

Digital Video Recorder (DVR):

A device that compresses and records video signals onto built in Hard Disk Drives (HDD)

Field of View:

Area covered by the camera.

Focal Length:

The rated coverage of the lens in mm. Smaller numbers give a wider angle of coverage.

Format:

The size of the CCD in a camera. Common sizes are 1/4", 1/3" and 1/2".

F-Stop:

Measurement of how much light a lens will let in. The smaller the number the more light that can enter.

Format:

The size of CCD in a camera. Common sizes are 1/4", 1/3" and 1/2"

F-Stop:

Measurement of how much light a lens will let in. The smaller the number the more light that can enter.

Ground Loop:

When the camera and monitor are powered from sources using different grounds with different ground potentials. If a path for current flow (other than the coax) exists, ground loops are possible. Solution: Install a ground loop corrector or power all camera from the same source as the monitor.

Intensifier:

Amplifies & balances extremely low levels of visible and IR light to display usable pictures where other cameras are not able. Several technologies including WDR (Wide Dynamic Range), DNR (Dynamic Noise Reduction) and Dynamic Shutter Technology work together to display pictures in as little as .00002 lux. The lack of active IR LEDs on these cameras reduces current requirements, reflectivity issues and heat build-up.

IP Address:

A string of numbers that identifies a camera or DVR on a network

Iris:

Allows the physical change of the F-stop of a lens

LCD Monitor:

Flat screen monitor used when space is at a premium. Only 2" deep.

Looping:

The ability to pass your video signal through a device and continue it on to another. Normally used in monitors.

Line Lock:

A string of numbers that identifies a camera or DVR on a network

Lux:

Measure of light equaling 1/10th of a foot-candle.

Monitor:

Displays the video signal.

Multiplexer:

Takes multiple cameras (up to 16) & combines them onto a single cable or screen for viewing/recording.

Observation Systems:

Complete packages that include camera, monitor, mounting bracket, cable, power supplies, etc.

Quad Splitter:

Combines four cameras onto one screen for viewing or recording.

Resolution:

Measure of a camera's ability to reproduce details. Higher numbers are better.

Sensitivity:

Measured in Lux. Camera's ability to operate in low light situations. Lower numbers are better.

Sequential Switcher:

Displays cameras, one at a time upon a monitor or into a VCR. The time spent on each camera before moving on to the next is adjustable.

Telephoto:

When a lens can see a long distance with great detail.

Termination:

75-Ohm load placed at the end of a video line.

Time Lapse VCR:

Recorder that runs for extended periods of time (up to 40-days) on a single VHS tape. Usually has a built-in time/date generator.

Varifocal Lens:

A lens that can be set for various focal lengths to achieve select coverage.

A	CVC637EXW.....	105	D32GS.....	20	KBDPTZ1.....	68	VFMP2.2812DC..	145	
AIE.....	141	CVC646HR.....	78	D32PS.....	22	KMUSB.....	138	VGA135.....	138
B	CVC646HRW.....	78	DCPLGBLOK.....	135	KVMPC2.....	138	VGABNC.....	140	
BNCVGAHR.....	139	CVC648IRHQ.....	76	DFM.....	144	L	VGADISTK5.....	139	
BVMS2.....	130	CVC648IRHQW.....	76	DIVXTNDR.....	142	LB1.....	143	VGADHMI.....	140
C	CVC648IRVFHQ.....	76	DVR4HD.....	30, 31	LCDVLW1.....	122	VGAR.....	139	
C600VFSCS.....	113	CVC648IRVFHQW.....	76	DVR82HD.....	28, 29	LCDVLW2.....	122	VID4AMP.....	133
CAMMIC.....	140	CVC675.....	116	DVRPC16T.....	16, 17	LPRB922.....	94	VID2412CONV.....	135
CBL25.....	145	CVC695.....	117	H		LPRD3712.....	69	VIDAMP.....	133
CBL25BB.....	145	CVC695AM.....	117	HDB480.....	27	M	VIDCAT2.....	135	
CBL50.....	145	CVC700HRSCS.....	114	HDFO.....	131	M17LCBVH3.....	123	VIDDIST.....	133
CBL50BB.....	145	CVC770PHSCS.....	114	HDID450.....	26	M19LCBVH3.....	123	VIDDVR.....	133
CBL100.....	145	CVC812PC.....	115	HDMI4SWT.....	134	M185LCBV4.....	122	VIDGL.....	135
CBL100BB.....	145	CVC865DN24.....	109	HDOD460.....	25	M215LCBV4.....	122	VIDUTP.....	135
CBL150.....	145	CVC5100BPVF.....	86	HDR.....	131	MVTBNCSCR.....	142	VL6WMTDV.....	75
CBL150BB.....	145	CVC5100BPVFW.....	86	HDS1T4.....	131	N	VL11.....	104	
CCLR13D7G.....	64	CVC5200BPVF.....	86	HDT470.....	32	NVRP4.....	18, 19	VL12.....	79
CILT00T6B.....	111	CVC5200BPVFW.....	86	HINT13D7G.....	52	O	VL62.....	101	
CILT00T6W.....	111	CVC5300DPVF.....	58	HT8WMTDV.....	75	O2CL.....	144	VL62W.....	101
CL8.....	145	CVC5300DPVFW.....	58	HT650IRVFHQ.....	73	O2D3.....	10	VL66.....	102
CL16.....	145	CVC5400DPVF.....	58	HT650IRVFHQW.....	73	O2DFM1.....	144	VL66W.....	102
CLB2.2.....	145	CVC5400DPVFW.....	58	HT650PT10X.....	65	O2DFM2.....	144	VL67.....	103
CLB2.5.....	145	CVC5715DNV.....	88	HT5100BPVFG.....	84	O2DP7.....	9	VL67W.....	103
CLB2.9.....	145	CVC5715DNVW.....	88	HT5100BPVFGW.....	84	O2DWM1.....	144	VL183.....	77
CLB3.6.....	145	CVC5725DNV.....	59	HT5200BPVFG.....	84	O2S1.....	11	VL183W.....	77
CLB4.....	145	CVC5725DNVW.....	59	HT5200BPVFGW.....	84	O2T5.....	14	VL562SD.....	116
CLB6.....	145	CVC5735DNV.....	60	HT7048IRVF.....	92	OB1.....	7	VL565PIR.....	117
CLB8.....	145	CVC5735DNVW.....	60	HT7049IRVF.....	92	OD8.....	8	VL572PIR.....	117
CLB12.....	145	CVC5815DNV.....	89	HT7246iHR.....	51	OPTZ36Xl.....	12	VL611C.....	109
CLB16.....	145	CVC5815DNVW.....	89	HT7247iHR.....	51	OPTZ36XO.....	13	VL644DC.....	79
COMHDMI.....	140	CVC5825DNV.....	59	HT7248FFi.....	55	OPTZCM.....	144	VL644DCW.....	79
COMXTNDR.....	141	CVC5825DNVW.....	59	HT7250iHR.....	51	OPTZDFM.....	144	VL647iLT.....	64
CSAR1.....	145	CVC5835DNV.....	60	HT7816DNV.....	91	OPTZOH.....	144	VL648IR.....	77
CST100.....	145	CVC5835DNVW.....	60	HT65010XS.....	74	OPTZPM.....	144	VL648IRVF.....	77
CST115.....	145	CVC5845DNV.....	61	HT65010XW.....	74	OPTZWM.....	144	VL648IRVFW.....	77
CST125.....	145	CVC5845DNVW.....	61	HTB11FFi.....	85	OS101.....	15	VL648IRW.....	77
CST125A.....	145	CVC5915DNV.....	89	HTD8FFi.....	56	P	VL650IRS.....	72	
CST175.....	145	CVC5915DNVW.....	89	HTINTB8.....	82	PCN8.....	132	VL650IRVFS.....	72
CST175A.....	145	CVC5925DNV.....	59	HTINTB8G.....	83	PSQ8.....	132	VL650IRVFW.....	72
CSTTBAR.....	145	CVC5925DNVW.....	59	HTINTB8GW.....	83	PSW3.....	145	VL650IRW.....	72
CVC44BC2.....	120	CVC5935DNV.....	60	HTINTB8W.....	82	PSW4.....	145	VL5700BPVF.....	87
CVC50BC.....	120	CVC5935DNVW.....	60	HTINTB9.....	82	PSW5.....	145	VL5700BPVFW.....	87
CVC61HRB.....	110	CVC5945DNV.....	61	HTINTB9W.....	82	R	VL7038IRVF.....	93	
CVC61HRW.....	110	CVC5945DNVW.....	61	HTINTB10.....	82	RFM1A.....	136	VL7039IRVF.....	93
CVC61iLT.....	111	CVC6146SCS.....	70	HTINTB10G.....	83	RS232485C.....	138	VLINTT5.....	107
CVC61iLTW.....	111	CVC6146SCSFF.....	71	HTINTB10GW.....	83	S	VM5LCD.....	126	
CVC62HRB.....	110	CVC6146SCSFFW.....	71	HTINTB10W.....	82	SPCOAX.....	142	VM10LCD.....	127
CVC62HRW.....	110	CVC6146SCSW.....	70	HTINTD8.....	53	SPI.....	142	VM15LCD.....	124
CVC62iLT.....	111	CVC6246iHR.....	54	HTINTD8W.....	53	SPPOE.....	142	VM17LCD.....	124
CVC62iLTW.....	111	CVC6246iHRW.....	54	HTINTD9.....	53	SPUTVD.....	142	VM17LED.....	121
CVC71HRB.....	112	CVC6405DC.....	78	HTINTD9W.....	53	SPVP.....	142	VM19LCD.....	124
CVC71HRW.....	112	CVC6705SCS.....	97	HTINTD10.....	53	STRXTNDR.....	140	VM19LED.....	121
CVC75.....	116	CVC638170.....	105	HTINTD10W.....	53	T	VM22TSLCD.....	128	
CVC130R.....	104	CVCJBB,W.....	144	HTINTT5.....	106	TC23.....	118	VM26LCD.....	125
CVC175A.....	145	CVCJBD.....	144	HTSD10X.....	66	TC25VF.....	118	VM901B.....	130
CVC320WP.....	100	CVCWM,W.....	144	HTSD37X.....	67	TC242.9F.....	118	VM905C.....	130
CVC320WPW.....	100	D		I		U	VM1401B.....	130	
CVC521BC.....	120	D4CS.....	36, 37	INTCM,W.....	144	USBPL1.....	136	VMHT19LCD.....	125
CVC544BC2.....	120	D4M500.....	46, 47	INTJBS,W.....	144	UTP4A.....	136	VM52.....	130
CVC605CM.....	115	D4RS.....	38, 39	INTPM.....	144	UTP4AR.....	137	VMS4.....	130
CVC607CMTP.....	115	D4WCS.....	40, 41	INTPM,W.....	144	UTP4P.....	137	W	
CVC607EXCM25.....	115	D4WRS.....	42, 43	INTWM.....	144	UTP16P.....	137	WDR700VF.....	113
CVC614C.....	109	D4WRSP.....	44, 45	INTWM,W.....	144	UTP16PAR.....	137	WDRB1.....	90
CVC620WP.....	100	D8CS.....	36, 37	IPPOEINJ25.....	134	UTPAUDIO.....	140	WDRD3.....	62
CVC622PH.....	105	D8LS.....	34, 35	IPPOEINJ1295.....	134	UTPGL.....	135	WDRT6.....	108
CVC624WDR.....	63	D8RS.....	38, 39	IPPOERT.....	134	UTPPTAIL.....	137		
CVC624WDRW.....	63	D8WCS.....	40, 41	IPPOESPL25.....	134	V			
CVC627.....	98	D8WRS.....	42, 43	IPPOESPL1295.....	134	VCH400HBMT.....	143	68WMT.....	75
CVC627B.....	98	D8WRSP.....	44, 45	IPRG59.....	141	VCH400MT.....	143	650CMTS, W.....	144
CVC627M.....	99	D16CS.....	36, 37	IPXTNDR.....	141	VF2.812.....	145	650CPS, W.....	144
CVC627MR.....	99	D16LS.....	34, 35	IR200.....	119	VF2.812DC.....	145	650JBMTS, W.....	144
CVC627SCS.....	95	D16RS.....	38, 39	IR300.....	119	VF3.58.....	145	650WMTS, W.....	144
CVC627VFSCS.....	96	D16WCS.....	40, 41	IR20024.....	119	VF3.58DC.....	145		
CVC627VFSCSW.....	96	D16WRS.....	42, 43	J		VF660DC.....	145		
CVC627W.....	98	D24GS.....	20	JB03TG,W.....	144	VF5100DC.....	145		
CVC637EX.....	105	D24PS.....	22	K		VFMP2.2812.....	145		

Speco Technologies is the leading manufacturer of unique video surveillance and audio products that help deter crime. For more than 50 years, Speco Technologies has been committed to creating advanced technology solutions such as Digital Deterrent™, HDccTV over coax, IP megapixel cameras, and remote access & control through handheld mobile devices. Speco Technologies provides exceptional customer service, in depth product training, superior technical and marketing support, and a generous product guarantee.

For more information, visit www.specotech.com

Speco Technologies professional and friendly regional sales managers are our first line of support. In addition to selling the features and benefits of our unique product line, they provide onsite demonstrations and formal classroom training for video and audio products.

They can also help you grow your business by tailoring custom marketing programs and materials to any vertical market or audience segment.

To get more information or to contact a Speco Representative, call 1-800-645-5516 or email sales@specotech.com today.



speco technologies®

2012 Video Security Solutions

Contact us at: sales@specotech.com
Toll Free: 1-800-645-5516
Metro NY: 631-957-8700
200 New Highway
Amityville NY, 11701



*Did You Know?
Speco Technologies
has been manufacturing quality audio
products for over 50 years?
Call today to request your
Speco Commercial & Residential
Audio Product Catalog!*

