



Long-Range, Durable, SIP-based, Industrial Cordless Voice Communication System

Call Handoff between Base Units

Product Highlights

The DuraFon Roam is EnGenius 2nd generation durable, long-range SIP cordless phone.

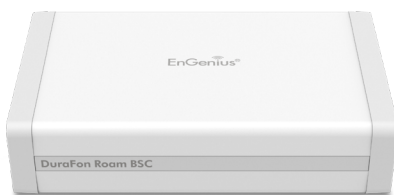
The DuraFon Roam Voice Communication System delivers new levels of industry-leading range with the ability to roam between base units while on a call. The new DuraFon Roam system can provide up to 4 times the coverage of even our range-leading 1st generation platform. The brand's renowned durable handset's design and built-in digital two-way radio functions remain.

The DuraFon Roam allows for up to eight (8) base units with SIP and even an analog port on each base. The system can support up to 32 concurrent calls, 90 handsets and 32 SIP accounts. Designed to serve demanding environments where communication can be challenging due to the size or configuration of the environment. The DuraFon Roam well exceeds the range of a Wi-Fi or DECT phone. Built for use at these and similar environments:

- Large Retail Stores
- Assisted Living Facilities
- Manufacturing & Industrial Plants
- Warehouses
- Grocery Stores
- Hotels
- Expansive Agricultural Properties
- Equipment Rental Yards
- Vehicle Service Centers

Features & Benefits

- Long Range Multi-Base SIP Voice Communication System (phone and digital two-way radio)
- Supports up to 8 Base Units with Roaming
- Range Performance up to:
 - 200,000 sq. ft. or 24 Floors In-Building Penetration (Office)
 - 1,000,000 sq. ft. in Warehouse / Retail cssd Store
 - 3,000 Acres Open Land (Farm / Ranch) Coverage
- Multi-Mode Communications
 - Total 8 Bases, Supports up to 32 Concurrent Calls (32 SIP or 24-SIP + 8-PSTN) new
 - Works with Standard SIP protocols of IP-PBXs or hosted service providers
 - Intercom & Broadcast over IP
- Durability, Rugged Design
- Secure 900 MHz (902 ~ 928MHz) FHSS
- Web-GUI Configuration
- Doesn't use valuable Wi-Fi bandwidth



Premises Mobility Communications Solution

DuraFon Roam is a powerful, reliable, versatile multi-mode communications system that delivers industry-leading range and durability while providing significantly lower CapEx and OpEx when compared to other SIP cordless phone solutions.

Lower CapEx, faster deployments:

DuraFon Roam features EnGenius high-power, easy-to-deploy multi-cell technology that covers up to 4 times indoors and outdoors coverage, penetrates in-building, minimizing the amount of equipment required.

Reduced OpEx, less downtime:

The proven durability of the DuraFon series-over 10 years of continued innovation and testing-ensures that the phones will survive in the most challenging environments where handsets are subjected to drops and shocks.

Flexible and easy-to-deploy:

Easily configured web-GUI via EnGenius Cloud, DuraFon Roam supports both PSTN and SIP functions, and works with any IP-PBX system or hosted service provider that supports the standard SIP protocol. In addition to long-range connectivity, the multi-mode system also enables users to communicate via 2-Way Intercom and PTT Broadcast modes.

Flexible, Multi-Mode Communications

Independent 2-Way Intercom

The DuraFon Roam's Handset provides handset-to-handset communication with or without going through the Base Station for quick contact with specific users without group chatter.

Broadcast Feature

DuraFon Roam offers the favored, "Push-to-Talk" feature through the Handset's Broadcast button, allowing users to create 1-way communications for 1-to-All or 1-to-A Handset Group for instant group communication.

Dual Interface

Support for both SIP and PSTN lines permit the connection of the Base Station to a legacy PBX, IP-PBX or phone service provider and gives users up to four (4) talk paths via four (4) digital calls or three (3) digital calls and one (1) analog line.

Cloud Access

EnGenius Cloud improves users operational efficiencies, help maintain high customer satisfaction, and cut the operational costs.

Easy Configuration

User can remotely configure the networking connectivity, multi-base, SIP account, audio setting, phonebook and all related settings in anywhere and anytime.

Easy Management

Real time and visualized information helps user to easily manage the DuraFon Roam's devices.

Easy Monitoring

User can collect the trunk/account/line status, handset/base status, call statistics and traffic statistics, present and analysis through dashboard, help user to monitor the whole operation of DuraFon Roam system.

Durable, Rugged Design

The DuraFon Roam's durable, rugged Handset is designed for use in demanding environments and tested to withstand 6-foot drops, over 50 times onto concrete floor without breaking.

Superior Long-Range Performance

DuraFon Roam implements a high-powered 900MHz proprietary air protocol, with high RF transmission and sensitivity to provide superior range and coverage for large footprint environments; covering up to 1,000,000 sq. ft. (retail store/warehouse), 3,000 acres (farm/ranch) and penetrating up to 24 floors or 200,000 sq. ft. (hotel/office).

Secure Wireless Communications

Adopting 900MHz (902~928MHz) FHSS (Frequency Hopping Spread Spectrum) technology, the DuraFon Roam ensures secure communications during conversations.

Multi-Cell Technology Expand Coverage

The DuraFon Roam features multi-cell technology that leverages multiple 900 MHz Base Stations for long-range coverage, expanding the coverage by adding Base Stations, helping companies enlarge the user capacity and range through multi-base installation.

20-Years of Trusted Reliability

EnGenius brings over 20 years of product and engineering experience with long-range leadership for voice communication to the DuraFon Roam system.

Low Total Cost of Ownership Available for SIP Deployments

Unlike other SIP systems, the DuraFon Roam offers the low TCO available for large-area SIP deployments. By simplifying and expediting system deployments, the DuraFon Roam lowers overall equipment costs and ensures less downtime through its proven reliability, reducing overall operating expenses for the life of the system.

Operates Independently of Wi-Fi Networks

By using the 900MHz frequency, DuraFon Roam operates independently of the Wi-Fi network and doesn't require valuable Wi-Fi bandwidth or present Wi-Fi QoS concerns. available for large.

Technical Specifications

SIP

Voice code: G.711a, G.711u, G.729A

SIP protocol: RFC3261

DTMF: RFC2833, SIP INFO Hold: RFC3264

Transfer: RFC3515, RFC3891, RFC3892

Support Outbound Proxy

DNS SRV Support

Long-Range (8-Base)

24 Floors In-Building Penetration, 200,000 sq. ft. (Hotel/Office)

1,000,000 sq. ft. (Warehouse/Retail Store)

3,000 Acres of Open Area (Farm/Ranch)

Durable

Tested to withstand 6-Foot Drops, Over 50 Times onto Concrete Floors

Handset Features

Cordless telephone

2-Way Radio

User Handset Naming

Keypad Lock

Speakerphone

Caller ID

Call Waiting

Vibrate Mode

Line Select

Call Logs – Dialed & Received

Redial

Speed Dial

Call Hold

Call Transfer

Wireless PBX Function Sharing

Wireless Phone Book Sharing

Silent Ring

Mute

Wired Headset

BlueTooth

900 MHz, DSS, Frequency Hopping

Selectable Handset Grouping (7 groups)

Phone Book Supports 50 Entries

Intercom (Handset-to-Handset)

PTT Broadcast (One-to-Many)

System

900MHz

Multi-Cell Architecture

Roaming & Handoff

Multi-Base up to 8

1 LAN and 1 PSTN Ports per Base Unit

Multi-Handset up to 90

Removable Base Antenna

Flexible Port Dedication: Single, Group or All

Standard SIP Protocol Connection

Remote Configuration via EnGenius Cloud

Any Analog Line Connection:

- Landline, ATA, Cellular, VoIP or Satellite

Supports Ring Groups & Hunt Groups

Type I/II Caller ID (FSK and DTMF)

Visual Message Waiting Indication (VMWI) for PSTN

Conference Calling

Modifiable Flash and DTMF Tone Timing

Secure, Digital Spread Spectrum w/Frequency Hopping Technology

EnGenius Cloud Remote Access

Battery & Charger

Li-Ion Technology

6-Hours of Talk Time

50-Hours of Stand-By Time

Desktop Charger Supports Handset & Spare Battery

4-Hour Recharge Time

Battery Hot-Swap While Call is On-Hold

Optional Equipment

External Base Antenna Kits: Optional indoor or outdoor antenna with 20-meter low-loss LMR-400 cable

Lightning Protection Kit (static charge surge arrestor)

Antenna Splitter

DuraPouch Phone Case

DuraFon Roam Value

No Monthly Bill

No Per Minute charges

No Contracts

No Annual FCC License Fees

No Extensive Infrastructure Installation

No QoS Concerns

No Wireless Network Interference

Manufacturer's Part Numbers

DuraFon Roam-BSC (Base Station Controller)

DuraFon Roam-HC (Handset)

DuraFon Roam-BU (Base Unit)

Physical Interface

1. Controller: DuraFon Roam - BSC

LED	Button	Jack
Power (Orange)	Reset	RJ-45 x 2
LAN (Green)	Lower	Micro SD Slot



Controller: DuraFon Roam - BSC

Port Mirroring	Support one to one and many to one
Port Trunking	V
Packet Suppression Control/ Storm Control	Broadcast/Multicast/ Unknown-multicast, and unknown-unicast
Static MAC Address	V (support 256 entries)
Dynamic MAC List	V
Bandwidth control	Rate limit according to network speed:

VLAN

802.1Q support	v
VLAN Group	Number of VLANs supported per device Max. Static VLAN #: 4094 Be able to configure VID from 1-4094
Port-base VLAN	Max. VLAN Group: equivalent to switch's port number
Voice VLAN	v
802.1ad Double VLAN (Q-in-Q)	N/A

CoS

Queue	Number of priority queues supported : 8
CoS based on 802.1p priority	V
CoS based on physical port	V
CoS based on MAC	Destination address only
CoS based on TOS	V
CoS based on DSCP	V

Security

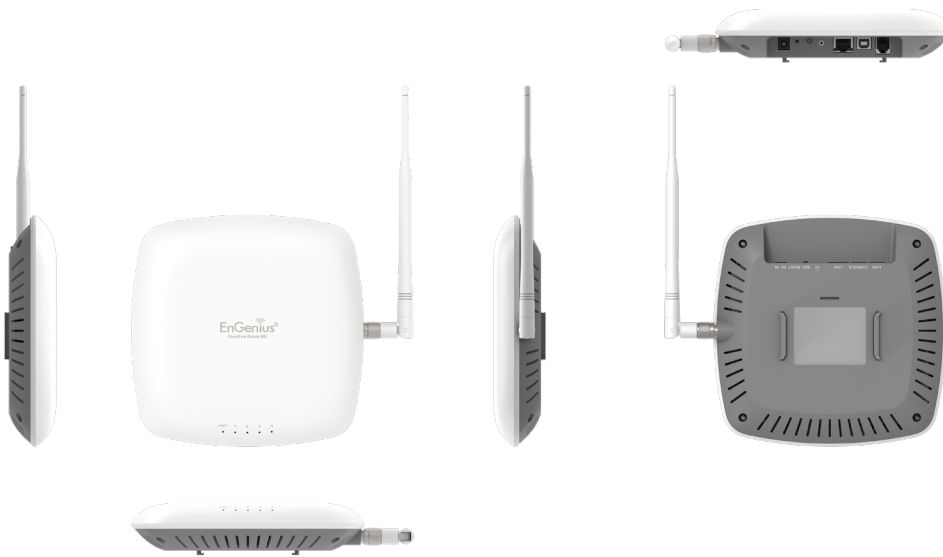
802.1X Port-based Access Control	V
802.1X Guest VLAN	V
Port security	0~16383 entries
Storm control	Support Min. granularity: 64Kbps
DOS Attack Prevention	V
Access Control List (ACL)	V

Management	
PoE management	Power on/off per port
	Power class configuration (autoclass/userdefine)
	Power feeding with priority
	User define power limit
Telnet Server	V
TFTP Client	V
BootP/DHCP Client	V
Web-based support	V
SNMP v1 support	V
SNMP v2c support	V
SNMP v3 support	V
TFTP upgrade	V
Command Line Interface (CLI)	V
Web MAC address Browsing	V
SNTP	V
TACAS+ Authentication	V
RADIUS Authentication	This is implemented with 802.1X Port-Based Access Control etc. for client centralize management
Web UI supports non-IE browser	Chrome, Firefox, Safari
RMONv1	Support 4 Groups of RMON (Statistics, History, Alarms, Events)
SMTP client & Log enhancement	V
SYSLOG	Support Log admin password/IP change activity enhancement
Cable Diagnostic	V

MIB Support	
MIB II	RFC1213
Bridge	RFC1493
RMON	RFC1757
802.1p	RFC2674
Controller Software Specification	
IEEE1588 Precision Time Protocol (PTP)	V
Beacon time slot	V
Auto-ACK	V
Web-GUI	V
System monitoring	V
SIP trunk	32 (DuraFon H/S: 32 + SIP H/S: 32)
Simultaneous call	32 + 32
H/S capacity	90 (DuraFon H/S x 90 + SIP H/S x 200)
Support number of B/S	8
Support number of PSTN line	8
Caller ID	V
Call transfer	V
Call hold	V
Intercom	V(via B/S and BSC)
Broadcast	V(via B/S and BSC)
Environmental	
Power Input	100-240V AC, 50/60 Hz
Power Consumption	TBD
	TBD
	TBD
Operating Temp	0 - 50'C
Storage Temp	-30 - 70'C
Humidity	10%-90%, relative, non-condensing
Dimensions	100 x 60 x 24mm
Unit Weight	80g

1. Base Station: DuraFon Roam - BU

LED	Button	Jack
Power	Reset x 1	Line x 1
Link 1	Reset x 1	LAN x 1
Link 2		DC x 1
Link 3		Grounding
Link 4		



Hardware Specification	
Frequency	902 - 928 MHz (Programmable)
RF Power	Peak: 28.5dBm(708mW)
Average: 19dBm(76mW)	V
RF Sensitivity	-108dBm
Channel Spacing	200 kHz
Number of Channels	128
Modulation	MSK
Multiple Access	Frequency Hopping TDMA
Frequency Hopping Rate	100 per second
TDMA Frame Length	10 ms
Number of Slots/Frame	8
Speech Coding	8 kbps G.729A
User Data Rate	128 kbps duplex
No. of System ID	65536
Port Functions	
RJ45	1
RJ11	1
RJ45 Console	1

Power Spec	
Power Type	PoE / External 48VDC ADP
AC Adapter	vDC 48V
Grounding jack	V
PoE Capability	
PoE standard	802.3af/at
Mechanical & ID	
Chassis Style	Ceiling mount / Wall mount
Material	Plastic
Color	White
Functional Buttons	
REG button	V
Reset Button	V

LED Indicators

Device	Power LED: (GREEN)
	<ul style="list-style-type: none"> • Solid Light Power On • Light off Power Off
Copper Ports	L1 ~ L4 LED: (RED)
	<ul style="list-style-type: none"> • Solid light in-use • Light off standby
Copper Ports	LAN Mode:
	<ul style="list-style-type: none"> • Green Solid Light Speed 100Mbps • Amber Solid Light Speed 100Mbps • Off Light off Speed 10Mbps
Copper Ports	Link/Act (GREEN) Solid Light Link
	<ul style="list-style-type: none"> • Blinking Transmit or receive on this port • Light off No Link

SIP

Voice codec: G.711a, G.711u, G.729A	V
SIP protocol: RFC3261	V
DTMF: RFC2833, SIP INFO	V
Hold: RFC3264	V
Transfer: RFC3515, RFC3891, RFC3892	V
Support Outbound Proxy	V
DNS SRV Support	V

Port Functions

1 LAN and 1 PSTN Ports per Base Unit	V
Removable Base Antenna	V
Flexible Port Dedication: Single, Group or All	V
Standard SIP Protocol Connection	V
Any Analog Line Connection: Landline, ATA, Cellular, VoIP or Satellite	V
Supports Ring Groups & Hunt Groups	V
Type I/II Caller ID (FSK and DTMF)	V
Visual Message Waiting Indication (VMWI) for PSTN	V
Conference Calling	V
Modifiable Flash and DTMF Tone Timing for PSTN	V
Secure, Digital Spread Spectrum w/Frequency Hopping Technology	V

Environmental

	TBD
Power Consumption	TBD
	TBD
Operating Temp	0 - 50'C
Storage Temp	-30 - 70'C
Humidity	10%-90%, relative, non-condensing
Dimensions	TBD
Unit Weight	TBD

1. Portable Handset: DuraFon Roam - HC

Button	Jack
Left & Right Soft-key	Headset Jack
Up	USB Jack
Down	
Talk/Speaker	
2-Way Intercom	
End & Power	
Broadcast	
0 ~ 9, *,#	



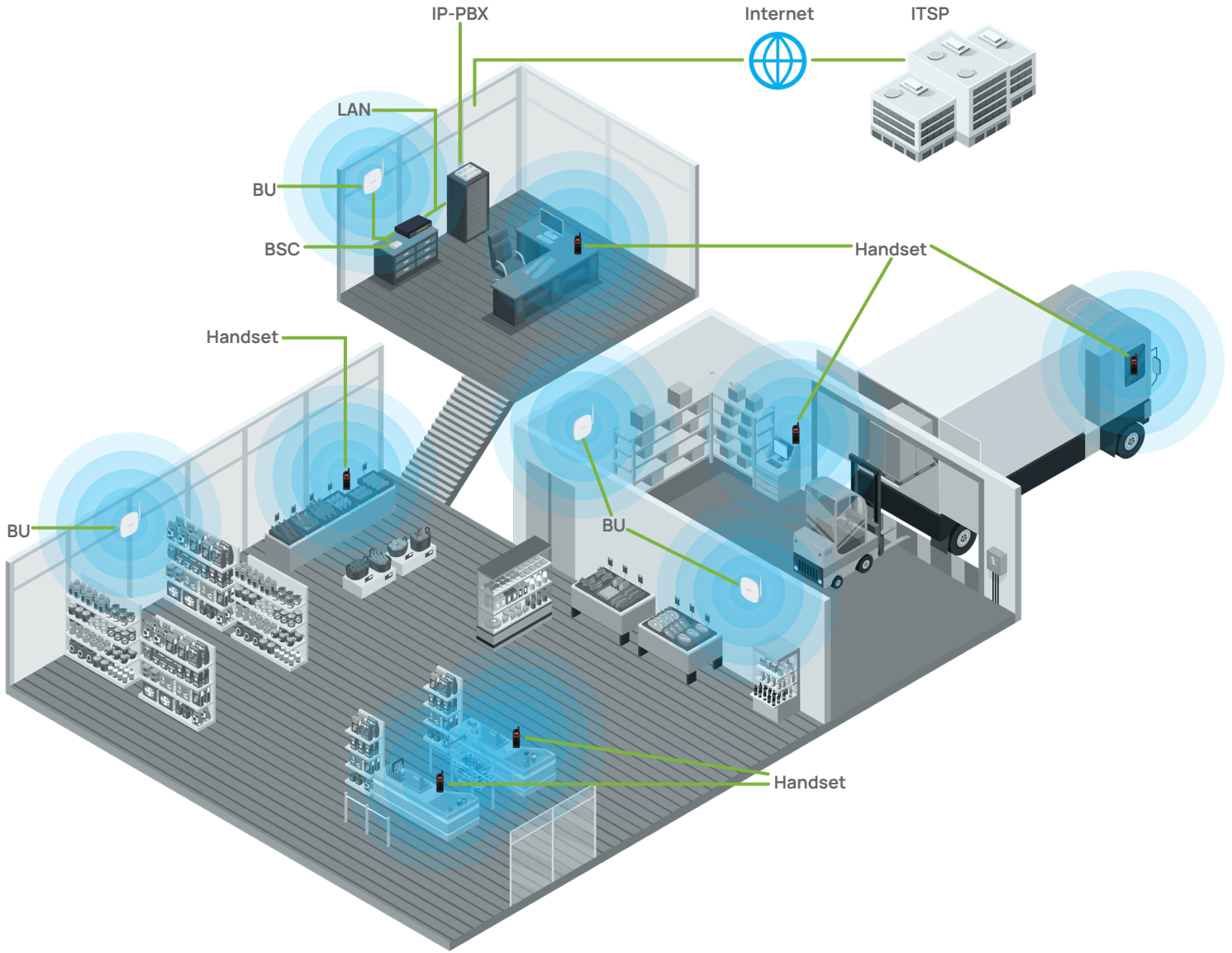
Hardware Specification	
Frequency	902 - 928 MHz (Programmable)
RF Power	Peak: 28.5dBm(708mW) Average: 19dBm(76mW)
RF Sensitivity	-108dBm
Channel Spacing	200 kHz
Number of Channels	128
Modulation	MSK
Multiple Access	Frequency Hopping TDMA
Frequency Hopping Rate	100 per second
TDMA Frame Length	10 ms
Number of Slots/Frame	8
Speech Coding	8 kbps G.729A
User Data Rate	128 kbps duplex
No. of System ID	65536

Environmental	
Power Source	AC/DC 100~240V/5.5V, 1.5A 3.7 V, 1700 mAh Li-Ion
Regulation Compliance	FCC Part 15, Part 68 CAN/DOC RSS210, CS03
Operating Temperature	-10 – 60 °C
Storage Temperature	-10 – 70 °C
Humidity	20 – 75 %
Function	
Dimension	161×58×31mm
Weight	175g
Operation range	> 5km
Durable design	V
Multiple handsets	V, up to 90
Half Duplex Broadcast	V

Full Duplex Intercom	V
Phonebook	V, 90 entries
PBX Functions	V, 9 entries per HS
Speakerphone	V
FSK/DTMF Caller ID	V, FSK
Security Code	65,536
Call Hold	V
Caller ID	V
Call Logs	V
Call Transfer	V
Call Waiting	V
Headset	V
Blue Tooth	V
Keypad Lock	V
Line/Base Select	V
Message Waiting Indicator	V
Mute	V
Redial	V

Handset Grouping (7 Groups)	V, up to 7
Silent Ring	V
User Handset Naming	V
Vibrate Mode	V
Wireless PBX Options Sharingv	V
Wireless Phone Book sharing	V
Handset buttons	
- End/Power	V
- Left & Right soft keys	V
- Up & Down scrolling	V
- Broadcast	V
- Talk/Speakerphone/Flash	V
- Intercom	V
- 0 ~ 9, #, *	V
Handset buttons	
- Earphone	V
- Micro-USB	V

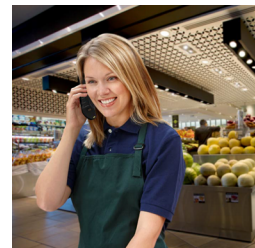
Application



Hotel



Warehouses



Grocery Stores

EnGenius Technologies | Costa Mesa, California, USA

Email: support@engeniustech.com | Website: www.engeniustech.com
Local Contact: (+1) 714 432 8668

Version: 09/2023

Maximum data rates are based on IEEE 802.11 standards. Actual throughput and range may vary depending on distance between devices or traffic and bandwidth load in the network.

Features and specifications subject to change without notice. Trademarks and registered trademarks are the property of their respective owners. For United States of America: Copyright ©2023 EnGenius Technologies, Inc. All rights reserved.

