



Wireless speakers that really plug & play

Introducing the first wireless speaker for commercial sound installations. The EOSP-622 wireless speaker will forever change the way that commercial sound installations are deployed. The Eos wireless speaker is simple for the sound contractor or end user to set up and use. This plug and play wireless speaker will save hundreds of dollars in installation costs and open up new installation configurations that were not possible with traditional wired systems.

Dual Zone Wireless Speaker

- Complete solution (receiver, amp & speakers)
- Zone 1 or Zone 2 selection switch
- Mode switch - Select Right Channel, Left Channel or Mono
- Integrated speakers (1" tweeters w/4" woofer)
- Integrated power supply
- Integrated Eos 2.4GHz receiver
- Integrated 30W Class D digital amp
- Volume control
- IR remote control (volume & tone)
- Integrated high-gain quarter wavelength antennas
- Link status LED
- Power indicator LED
- Up to 300 ft. wireless range
- Secure Link - Avoids unauthorized reception of audio signal
- Power saving mode - speaker goes into sleep mode when transmitter is powered off -- wakes immediately when transmitter is powered back on.
- Power outlet mounting -- No mounting hardware required when plugged directly to wall outlet
- Security mounting bracket for outlet mount installations
- Optional wall mounting bracket for non-outlet mounting
- Size - 11.5" x 6.25" x 5.25" (h/w/d)
- Weight - 5.9 lbs. (2.67 kg)

Mount anywhere!

The revolutionary design of the new EOSP-622 Wireless Speaker allows the speaker to mount onto any wall outlet and deliver incredible sound...or use the optional wall mount kit to mount the wireless speaker on any wall surface. The Eos Wireless Speaker adds new meaning to the term "plug and play".

Incredible flexibility, sound quality & wireless range!

The Eos Wireless Speaker is perfectly suited for use in virtually any environment, from professional & medical offices to spas, salons, cafes, restaurants and bars. This wireless powerhouse features an integrated 30W Class D digital amp, 4" woofer & 1" tweeter and the legendary performance of an integrated Eos wireless receiver. High-gain integrated quarter wavelength antennas allow a reception range of up to 300' (50m) from the transmitter. Mode switch allows the selection of right channel, left channel or mono audio. Zone switch allows selection of Zone 1 or Zone 2 wireless audio from either the Eos Streaming Music Player w/wireless transmitter (EOSP-510) or from the Eos Transceiver (EOSP-610) in transmit mode.



optional wall mount bracket

Use the volume control on each speaker or the IR remote control to tune the volume & sound characteristics of each speaker individually.

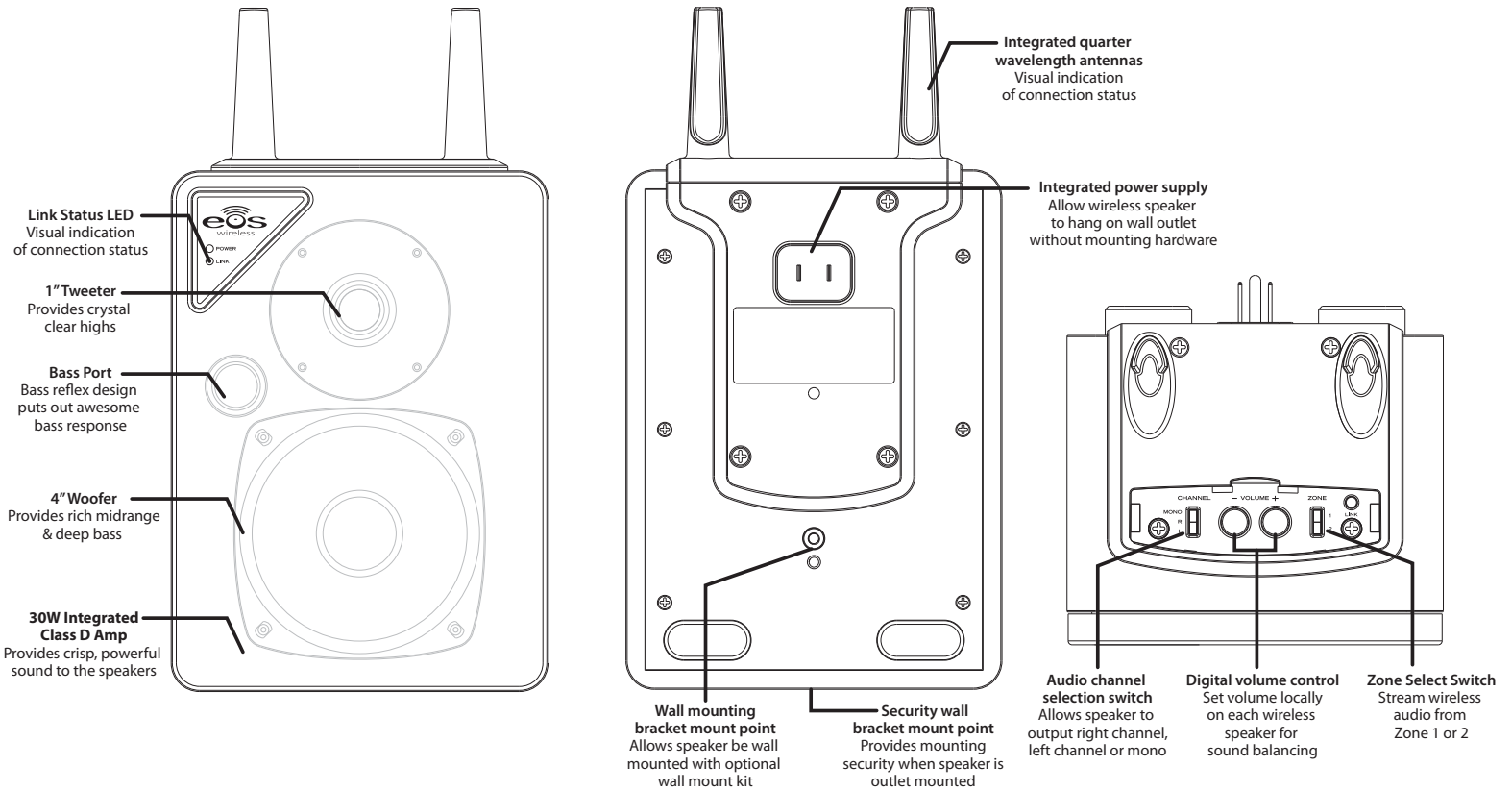


scan on your mobile device to visit our portal

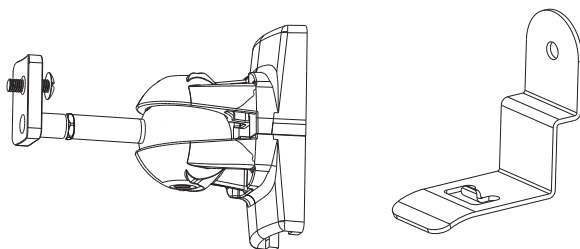




Controls & Functions



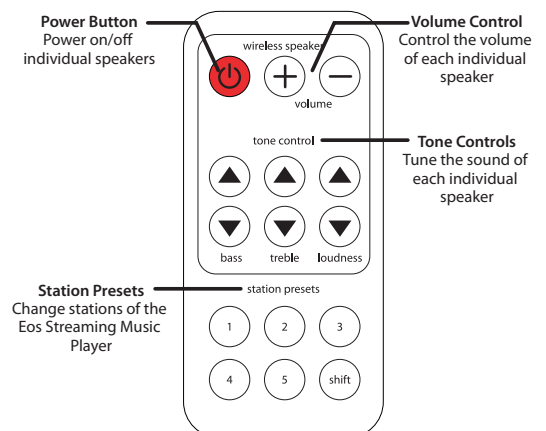
Mounting Brackets



Wall mounting bracket kit (optional)
Allows speaker to be mounted on any vertical surface

Security wall bracket mount (included)
Provides extra mounting security when speaker is outlet mounted

IR Remote Control



800.873.5528
WWW.TARGETD.COM

scan on your mobile device to visit our portal



www.eoswireless.com/pro

Eos Wireless • 6370 Nancy Ridge Drive, Ste. 105, San Diego, CA 92121 • 877.465.3927

* Eos is a trademark of IntelliTouch. Specifications subject to change without notice.