

---

# Design Your Business Communications with Vertical Summit2400



**iPECS**  
Your Communications Solution



As your workforce becomes more mobile and dependent on ease of collaborations, your communications solution should be simple, flexible and cost effective. For a business to perform and stay competitive, regardless of size, it needs tools that work well together to facilitate fast, well informed, critical decision making in a more efficient work environment.



## PRODUCTIVITY ENHANCEMENT OF YOUR BUSINESS WITH UNIFIED COMMUNICATIONS SOLUTION

In business, you need to constantly improve and maximize productivity. Here is a solution, Vertical Summit2400 and Summit2400 UCS. Summit2400 is the core platform, and Summit2400 UCS is an application that provides unified communications solution through integration with Summit. Summit2400 UCS delivers a wide range of benefits to the SME customer as a built-in simple UC application. It can also be seamlessly expanded for a feature rich full UC solution for the enterprise customers. In addition, Summit2400 provides various applications and communication tools, so users can easily work and communicate more effectively with their customers and coworkers more effectively than ever before.

Summit2400 UCS client is an intuitive desktop and mobile application designed for ease of use. And wherever you are, you can reach the resources needed for efficient communications. With a simple click, Summit2400 UCS client instantly accesses shared resources such as a central company directory and schedule synchronization. With presence information, users can reduce communication latency and communicate with others in the most appropriate format, Instant Message, voice call, video conference, SMS and more. To help improve decision making and response time, Users can use applications sharing, files sharing and other features that are provided to review the latest information such as sales records. Vertical Summit 2400 will simplify your business communications and will improve productivity by linking voice and other communications under an intuitive user interface.

## LOWER TCO AND COMMUNICATION EXPENSES

Vertical Communications partners with Ericsson-LG Enterprise, which has been focused on all size businesses for more than 50 years and this experience is reflected in the products and solutions. The best of which is Vertical Summit2400, from SME to Enterprise, to help you save money and lower costs. Vertical Summit2400 employs two types of deployment which are a fully distributed modular architecture and virtualization scenario to deliver all the advantages of VoIP. These two voice and data infrastructures significantly reduce the costs of managing your business communications solution.

Vertical Summit2400 is designed as a uniquely all modular IP system with distributed architecture. It's possible to provide an economical communications environment such as managing multi-sites or mobile offices. The modular type gateways, terminals and soft clients can be located anywhere there is access to your network. As users can connect anywhere, call charges decrease and business productivity increases. In addition, Vertical Summit2400 is easily scalable with licenses. This scalability saves up-front investment costs and also protects future investment.

Furthermore, Summit2400 provides virtualization solution which offers all the functionality and features of UC solutions as well. It can be deployed alongside other virtual applications in your VMware, AWS or MS Azure enabled data centers and it delivers a simple way to manage and enhance UC applications cost-effectively.

## EASY TO USE AND MANAGE

Whether you're adding a new employee, moving phones, dispatching a road warrior or deploying a new branch office, Vertical Summit2400 always makes it simple to do.

With a simple and straight-forward configuration along with plug and play installation, IT managers appreciate the ability to locate where Vertical solutions are needed without clumsy and difficult configuration limits. And IT managers can monitor and manage up to 500 call servers from a single remote point and have full access to the database and maintenance features of each system from anywhere through Summit2400 NMS.

Thanks to the modular and virtualized structures, you can simply add a license to increase the capacity or coverage of service as a business grows.

# Simple and Cost Effective Way to Use UC&C and Mobility Solutions

## Unified Communications Platform

Summit2400 is a Unified Communications Platform from Vertical Communications and Ericsson-LG Enterprise designed to meet SME and Enterprise communications needs. Summit2400 provides an out-of-box UC and Mobility solution that's scalable for premium UC capabilities.



### Embedded UC and Telephony

As the most compelling advantage, UC features are embedded in Summit2400. Users can improve business efficiency and productivity with embedded UC features including real-time voice, video and presence enabled IM with messaging services (Visual Voice Mail and SMS etc.) under a single user interface on multiple devices.

### Rich Business Applications

Summit2400 provides a various range of applications and mobile clients to fulfill varying needs and requirements in the SME environments. Also, it offers interoperability with various 3rd party solutions in hospitality, healthcare and other vertical industries.

### Wide Range of Mobility

Summit2400 provides multiple mobility solutions to improve business productivity and decrease communication expenses. Various options of Summit2400 IP DECT provides feature rich and reliable communications for high demanding mobile workers. Summit2400 UCS mobile client delivers the power of a desk phones to smartphones or tablet PCs for external mobile workers.

### Ultimate Flexibility on Deployment

Summit2400 as "Modular ALL-IP Architecture" enables flexible and cost-effective multi-site deployment with industry-unique architecture. Furthermore, virtualized deployment is supported to maximize flexibility on deployment as well. (Vertical Virtualized Summit2400 is needed) It can be fully networked in T-NET (Transparent Networking) or Networking mode with local survivability and PSTN failover. Also, it provides call server (Local/Geo) and power redundancy for seamless communications environment. Through flexible T-NET and redundancy features, IT managers can easily manage a multi-site architecture. Leverage your business to full of flexibility with wide range of deployment scenarios.

### Seamless Scalability

As a scalable call server Summit2400 allows businesses to easily expand capacity with optional gateways or boards. In addition, simple system port licensing enables upfront investment savings and cost-effective expansion as a business grows. Not only system capacity, communications features including UC solution also can be expanded or added with simple license.

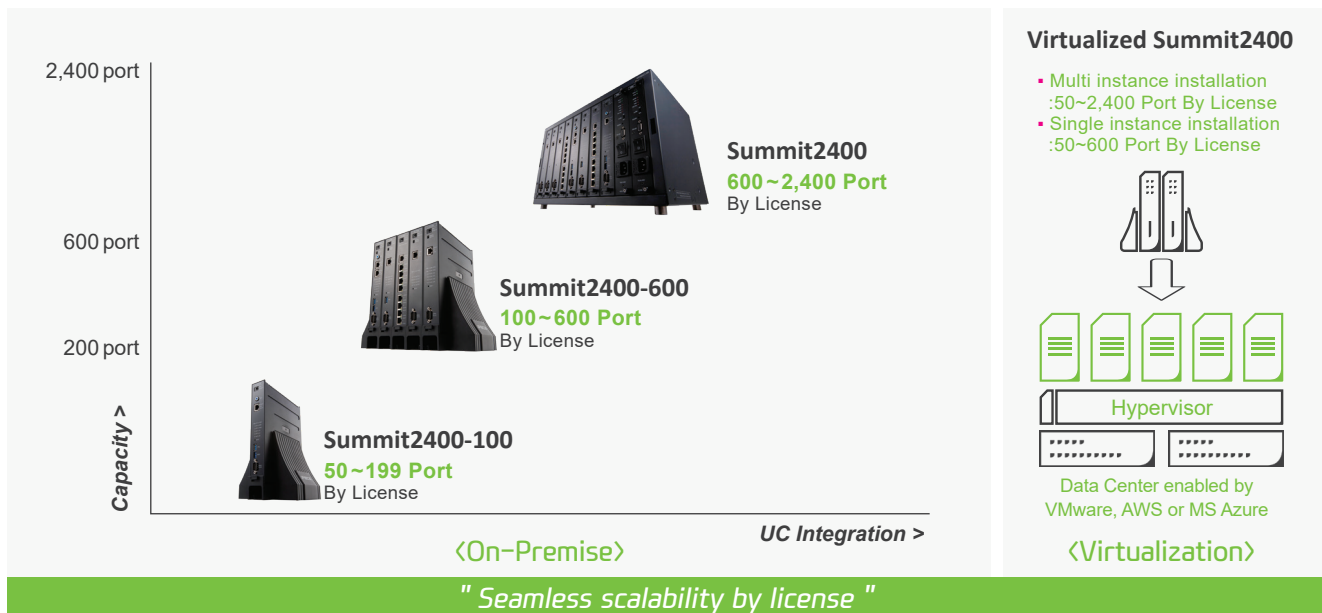
### Simple Deployment and Management

Summit2400 with its unique architecture fits for various business environments in a simple and cost-effective way. An Installation wizard simplifies the initial installations. In addition, intuitive and customizable Web-admin enables simple management for IT managers. Also, there is another type of web portal for end-user which is called 'Web User Portal'. End-users can easily set up basic personal settings anywhere via desktop or even on a mobile.

### Virtualize Your Business Communications

Vertical Virtualized Summit2400, as a software base call server is running on VMware, AWS or MS Azure virtual environment. The software is same as on-premise Summit2400 and all the system features as well. Under the equal user experiences, Virtualized Summit2400 will make easy deployment for your business communication's flexibility and scalability. Also, it delivers an innovative way to manage diverse business applications and collaborate cost-effectively, so you can leverage business communications while keeping all the advantages of Summit2400. Get your 90-day trial license of Virtualized Summit2400 that will allow you to try out all of the features.

Users can easily expand capacity of their system starting with a base of each models with simple license.



# Summit2400 Competitive Feature Set

Built-in system feature set and UC server provide various business applications and collaboration features to meet a variety of customers' needs.

## Modular All-IP Architecture

As modular all-IP architecture, Summit2400 enables flexible and cost-effective multi-site deployment with industry-unique architecture. Up to 100 call servers of T-NET (Transparent networking) are supported with local and geographical survivability and PSTN failover. Intelligent gateway modules can be deployed at any location. And high reliability with server redundancy and power redundancy is provided for seamless communication.

## Emergency/Alarm Call Service

Summit2400 provides wide range of emergency/alarm call services (Emergency call, emergency paging up to 50 groups, recording, monitoring, SOS paging, pre-recorded announcement, automatic triggering etc.) by the system itself. With embedded alarm call services, users can take an action rapidly for various emergency situations. For effective management, an automatic call with announcement can play and trigger an external relay contact. Also, all emergency calls are monitored and recorded in the emergency mailbox.

## One Number Service

Summit2400 provides one number service to users anywhere on any device. Users can have a consistent experience over multiple devices with seamless call control between devices. For example, when a user's master station receives a call, all devices will receive the call simultaneously. With one number service, users can experience a maximized business communication continuity.

## Embedded VoIP

Embedded VoIP channels are one of the great advantages with Summit2400. In addition, Summit 100/600 provides embedded VoIP relay (VoIP Switching) to provide more cost-effective VoIP channels (Max 16/24 channel by license). Summit2400's VoIP switching supports out-band SIP, T-NET and remote device/clients. Also, it provides Call Progress Tone Generation such as Ring Back tone, Busy/Error tone, Confirmation tone, etc. A completed feature-set of VoIP Switching can offer big cost benefits for overall business communications.

## Integration with 3rd Party Solution

Summit2400 provides easy integration with diverse 3rd party solutions. Summit2400 provides a cost-effective way to use the existing solution with high compatibility by applying universal interfaces such as Web API. Generally, direct or middleware integration is supported. When user has a local solution such as hospitality and healthcare solutions, it can be easily integrated and offer more convenient Summit2400 features than before through various middleware support. Also, interworking with MS Teams is possible through Call2Teams middleware.

## Embedded Voice Mail

Summit2400 delivers sophisticated and easy to use voice mail services by default and can seamlessly be expanded as required. With the embedded voice mail channels (8 channels by default) and many valuable voice mail features to enhance the customers interactions, (Multiple user greetings, E-mail notification, VM cascading, Centralized or Distributed voice mail services for multi-location businesses and Multi language service etc. These features are designed to increase the user's productivity with great Cost Advantages.

## Multi-Tier Mobility and Mobile Extension

Summit2400 is maximized for mobility solutions. Users can design multiple mobility solutions for both in and out of the office with either TDM and IP environment. In the office, IP DECT is available with essential features like system directory search and dial, alarm/emergency text messaging with 3rd party solutions. Max 254 IP DECT bases with 1000 handsets can be registered with seamless in-call handover as well as enhanced failover support to redundant call server. For out of the office, Summit2400 UCS mobile client covers rich communications features for mobile workers. In addition, Mobile extension feature is provided for seamless communications and ease of use. Through Mobile extension, calls can be seamlessly and easily moved back and forth between desk phone and mobile phone.

## Easy Audio Conference

Summit2400 provides a built-in audio conference bridge for cost-effective collaboration that can be easily expanded as required. With embedded conference features, users can collaborate easier than ever. There are 3 types of audio conference features. Conference Groups, pre-created conference members can easily initiate a group call to all members. Conference Rooms, pre-assigned conference rooms members can join the conference room with a password at any time with any device. And lastly, Ad-hoc Conference as multi-party conference can be easily set-up by the initiator. Conference capacity maximum is 200 rooms and 160 groups, each up to 32 parties.

## Simplified Multiple Calls Handling

Summit2400 provides for multiple call handling to allow seamless communications. A desktop phone's DSS buttons can be assigned for handling multiple calls. (Max 48 buttons) With preassigned buttons, users can easily handle multiple calls. For example, when a user is busy on a call and another call is presented to the station, the user can easily decide to answer or transfer the new call based on the pop up CID information using one of the preassigned buttons. When a user decides to answer the new call, the first call is placed on hold automatically allowing for easy and seamless communications.

## Simple Deployment and Management

Summit2400 is well organized with multiple levels of user-friendly administration tools. With an enhanced Installation wizard and Web-admin, IT managers can deploy and manage the system with ease. With intuitive and customizable Web-Admin, users can program and maintain the system via local or remote connection. Snap shot information of system resource usage like CPU, memory and storage enables a quick access to important system performance indicators. System alarm events and in-advance alerts can be notified to pre-assigned emails and call extensions so that the system can be managed in an appropriate way. (Alarm from external alarm relay contacts, Geo-redundancy failover notification, Emergency call notification, Bath alarm, Fault information, Capacity full and License expiration etc.) Also, there is a 'Web User Portal' for end-users to deliver fast customization by themselves. End-users can easily set up basic personal settings (Call Forward, Mobile Extension, Message, Voice Mail, Station Name etc.) anywhere via desktop or from their smart phone or tablet.

# Summit2400 UCS Introduction

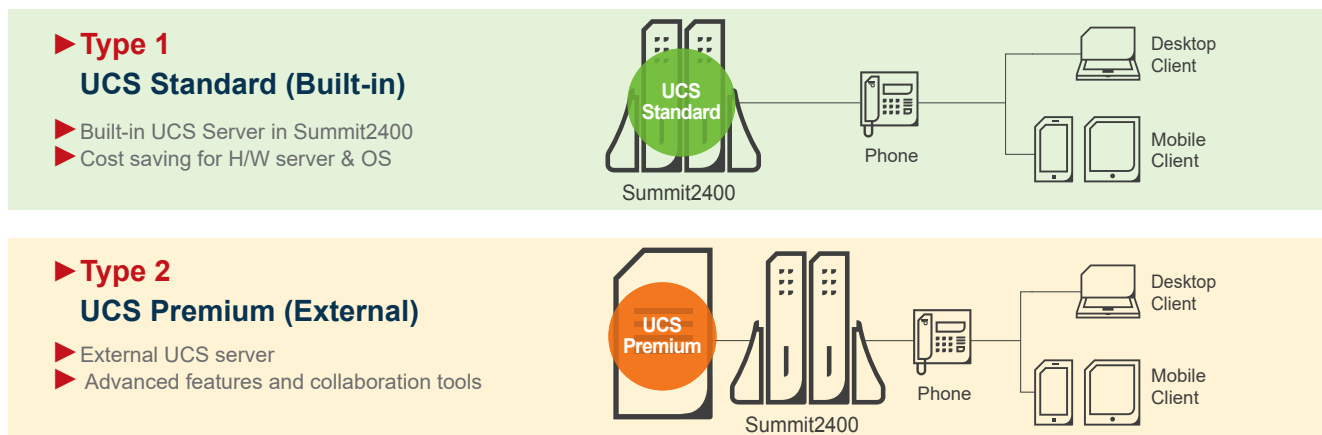
Vertical Summit2400 provides powerful UC and collaboration features with built-in or external type of UCS server and clients.

## Summit2400 UCS Highlights

<b>UCS Standard (Built-in)</b> <ul style="list-style-type: none"> <li>No additional H/W server and installation</li> </ul>	<b>Rich Presence &amp; IM Continuity</b> <ul style="list-style-type: none"> <li>Integrated presence and personal status</li> <li>IM continuity among devices</li> </ul>	<b>High quality Video Conference</b> <ul style="list-style-type: none"> <li>Max nine party video conference, sharing for document, desktop and application</li> </ul>	<b>MS Outlook Integration</b> <ul style="list-style-type: none"> <li>MS Outlook calendar integration and click to call from MS Outlook</li> </ul>	<b>Multi Log-in Support</b> <ul style="list-style-type: none"> <li>Support multi log-in for multiple devices at the same time with single ID/PW</li> </ul>
--	---	---	---	--

※ Summit2400 UCS features are dependent upon server types (Standard/Premium) and user base license (Basic/Advanced/Power). For more details, refer to below table.

## Summit2400 UCS Server Type



## Summit2400 UCS Feature Set by Server Type and User License

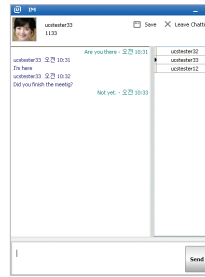
Server Type	Features	Basic User License	Advanced User License	Power User License
UCS Standard	Usable UCS client	Desktop (Call Control only)	Desktop/Mobile/Tablet	Desktop/Mobile/Tablet
	Log-in management	Single	Single	Multi
	One UCS account	O	O	O
	Desktop Call Control mode	O (Desktop only)	O (Desktop only)	O (Desktop only)
	Mobile MEX mode	-	O (Mobile / Tablet)	O (Mobile / Tablet)
	Call log / Call log sync	O / O (Desk phone & UCS Call Control)	O / O	O / O
	IM (1:1)	O	O	O
	Click to call	O (Windows only)	O (Windows only)	O (Windows only)
	Voice call	-	O	O
	iOS callkit (iOS only)	-	O (Mobile iOS)	O (Mobile iOS)
	Video call (1:1)	-	O (Windows only)	O (Windows only)
	On-demand recording (Desktop / Mobile)	O / O	O / O	O / O
	Flexible button (Desktop)	O (Windows only)	O (Windows only)	O (Windows only)
	Visual Voice Mail	O	O	O
	Audio conference manager	O (Windows only)	O (Windows only)	O (Windows only)
	CRM integration	O (Windows only)	O (Windows only)	O (Windows only)
MS Outlook sync (Contact)	O (Windows only)	O (Windows only)	O (Windows only)	
UCS Premium <small>* Feature enhancement incl. all Standard features</small>	IM (1:N)	O	O	O
	IM Continuity b/w clients (1:1 & 1:N)	O	O	O
	MS Outlook sync (Schedule)	O (Windows only)	O (Windows only)	O (Windows only)
	Video conference (9 party)	-	O (Windows only)	O (Windows only)
	Collaboration	-	O (Windows only)	O (Windows only)
	MS Exchange (Schedule)	O (Windows only)	O (Windows only)	O (Windows only)
	AD sync	O (Desktop only)	O (Desktop only)	O (Desktop only)
	SSO	O (Windows only)	O (Windows only)	O (Windows only)
	Organization chart	O	O	O

# Summit2400 UCS Main Features

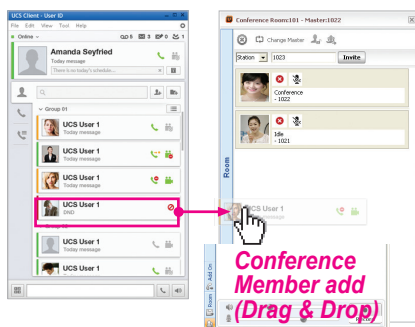
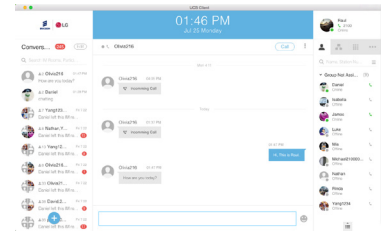
Summit2400 UCS provides UCS standard for SME and UCS premium for enterprise businesses. As all features are designed for a business size, customers can experience an efficient investment as their business grows.



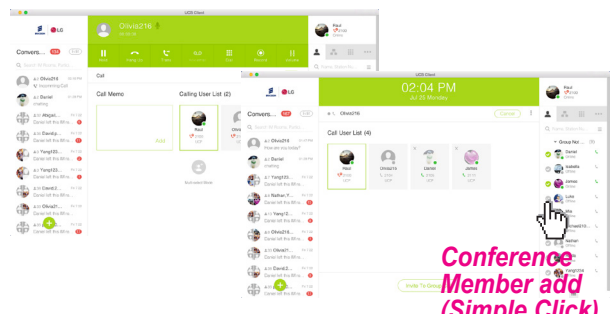
Integrated Presence



Instant Message (Win/Mac)



Audio Call & Conference (Win/Mac)



Conference Member add (Simple Click)

## Integrated Presence

- Instant decision on reachability by status color
- Save time and cost through real-time communications with people who are available for collaborations
- Integrated DND setting is available for both Summit2400 UCS client and desk phone at the same time

## Single & Multi Log-in by user license

- Single log-in : Support log-in on to one client at a time (Basic/Advanced user license)
- Multi log-in : Support log-in on to multiple devices at the same time with single ID/PW (Power user license)

## Audio Call & Conference

<Audio Call>

- Call popup : Display caller's information based on CID
- MS Outlook popup : Display caller's contact information in MS Outlook based on CID
- Call memo : Noting important information during a call
- Call recording : Easy on-demand call recording in local storage

<Audio conference>

- Easy conference building by graphical user interface and drag and drop
- Conference control features : Invite, Remove, Mute, Changing Master, Record

## Video Call & Conference

- Build face to face conference at anytime, anywhere
- Maximum 9 party, 8 group video conference
- Video resolution : QCIF, CIF, VGA, 4CIF (704 x 480/576)
- Ad-hoc/Meet-me conference and e-mail notification
- Application sharing during conference /Remote monitoring, still shot

## Supporting iOS CallKit – Mobile iOS Client

- Tight integration with the iOS UI using iOS CallKit
- Answering incoming UCS call on the lock screen
- Receiving mobile call during UCS call / Receiving UCS call during mobile call
- Making UCS call from the native phone app's contacts, favorites and recent

## Call Control

- Call control on Summit2400 UCS desktop client for the desk phone calls
  - Most call control function can be executed by one click or drag and drop (Answer/Drop/Deny/Transfer/Hold/Park)
  - Flexible button sync between desk phone and UCS desktop client\*
- \* Support only in UCS desktop client

## Instant Messaging, SMS and Note

- Easy user interface of IM; Inviting others simply by drag and drop
- IM continuity among clients
- Send and receive text messages to other internal Summit2400 systems or external SMS users
- Leave a note for offline Summit2400 UCS user

# Applications for Business Performance

Every business has different communications needs and meeting these needs is critical for designing business communications solution. Vertical Summit2400 offers wide range of business applications for you to fulfill all the needs regardless your business size or industry.



Summit2400 Attendant Office

## Summit2400 Attendant Office

IP based Attendant application for quick and easy call handling

- Easier management of call handling : Quick and easy call handling with simple clicking or drag and drop for an attendant
- Wait time and priority based call handling with caller information
- Phone and status presence based call routing
- Embedded IP softphone : Various call features of Summit2400 platform
- Desktop call control mode supported
- Directory service/phonebook management

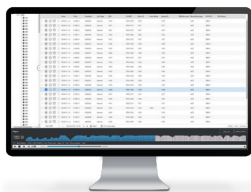


Summit2400 Attendant Hotel

## Summit2400 Attendant Hotel

Hotel solution optimized for small to medium sized hotels

- Effective front desk and staff work
- Maximize guest service
- Effective Call Management
- Productivity features :
  - Various Hotel features
  - Various and quick alternative contacts
  - Flexible and configurable layout and user interface
  - Statistic report and Snapshot of group monitoring
  - Local language support



Summit2400 IPCR

## Summit2400 IPCR

Optimized and integrated IP Call Recording solution

- Simple and cost effective solution designed by a single vendor
  - Single IP connection for all call and all terminal recording
  - Cost effective single server call recording
  - Support server redundancy
- Powerful value added features
  - Voice packet encryption and call recording at the same time
  - Flexible deployment without limiting functionality
  - Agent monitoring
  - Remote maintenance and automatic alarming
- Intuitive user interface
  - Users can easily access the recording files over web browser
  - Intuitive graphical display
  - Powerful statistics features with real time graphic view and search options
  - User base access level management



Summit2400 ClickCall

## Summit2400 ClickCall

Standard windows application for easy dialing

- Click to call from any selectable number in Windows application
  - Easy dialing of selectable number from Windows applications
  - Show dialed call log up to 10
  - Exit/Setup only through the icon in Windows tray
  - Setup dialing information
  - Multi language support
- Call control client without voice module
- Easy installation : Simple call client without dedicated server





Summit2400 CCX

## Summit2400 CCX

Browser-based multi-channel IP Contact Center

- Contact Center solution integrated with Summit2400 platforms
  - Multi-channel inbound and outbound contact center
  - Summit2400 IPCR is provided for a call recording
- Benefits of all software solution
  - Software based media processing through SIP
  - No PSTN media interface card
  - Interactive Voice Response (IVR)
  - Monitoring and report
  - Agent's desktop software
- Next generation single multimedia solution
  - Email, Voice Mail, Fax, Web chat
  - Social networking with Facebook and SMS server
  - Multimedia outbound Tele-Marketing



Summit2400 CCX Report Plus

## Summit2400 CCX Report Plus

Real-time monitoring and reporting for small sized Contact Centers

- Call distribution based on built-in ACD functionalities of call server
- Saving and displaying call accounting and ACD data generated from call server
- Real-time information display for supervisor and management
- Personal statistics for agent reporting and performance review
- Accesses anywhere - use dashboard in the company or remote office
- Simple for user to configure and create multiple dashboard screens



Summit2400 NMS

## Summit2400 NMS

A powerful web based Network Management tool designed to improve operation efficiency, permit rapid response to system alarms, and access remote, use statistics and alarm notification

- Fault management and real time system monitoring
- Web based client access
- Traffic statistics



# Summit2400 Terminals

Vertical Summit2400 supports an extensive range of terminals from IP/Digital to IP DECT. These are designed for business users who require a wide range of feature-rich telephony devices to match your constantly changing business needs. Summit2400 will give you an access to a large portfolio of terminals to optimize your unique business telephony needs.



## IP Phones

### 1080i Premium

#### Premium Gigabit video IP Phone

- 7" (1024 x 600) touch & color display
- Up to 48 programmable keys with 12 self-label keys
- HD video with high resolution (HD720p) and 8M pixel camera
- HD audio for handset and speaker with wideband codec (G.722, Opus)
- Full duplex speakerphone with wideband voice
- Dual Gigabit Ethernet ports
- 2 USB ports for charging mobile devices and USB accessories
- Built-in Wi-Fi, Built-in Bluetooth and HDMI port supported
- OS Version: Android 10



### 1050i Advanced



#### Advanced Gigabit color IP Phone

- 8 line 4.3" (480 x 272) color display
- Up to 36 programmable keys with 12 self-label keys
- HD audio for handset and speaker with wideband codec (G.722, Opus)
- Full duplex speakerphone with wideband voice
- Dual Gigabit Ethernet ports
- 1 USB port for charging mobile devices and USB accessories

### 1040i Professional



#### Professional Gigabit color IP Phone

- 6 line 3.5" (480 x 320) color display
- Up to 24 programmable keys with 8 self-label keys
- HD audio for handset and speaker with wideband codec (G.722, Opus)
- Full duplex speakerphone with wideband voice
- Dual Gigabit Ethernet ports
- 1 USB port for charging mobile devices and USB accessories

### 1030i Essential



#### Essential Gigabit color IP Phone

- 6 line 2.8" (320 x 240) color display
- Up to 18 programmable keys with 6 self-label keys
- HD audio for handset and speaker with wideband codec (G.722, Opus)
- Full duplex speakerphone with wideband voice
- Dual Gigabit Ethernet ports

---

1020i

Basic



---

### Basic Gigabit IP Phone

- 4 line 2.8" (132 x 64) grayscale display
  - Up to 16 programmable keys with 4 self-label and 4 paper-label keys
  - HD audio for handset and speaker with wideband codec (G.722, Opus)
  - Full duplex speakerphone with wideband voice
  - Dual Gigabit Ethernet ports
- 

---

1010i

Entry



---

### Cost effective entry IP Phone

- 4 line 2.4" (132 x 64) BW display
  - 4 self-label programmable keys
  - HD audio for handset and speaker with wideband codec (G.722, Opus)
  - Full duplex speakerphone with wideband voice
- 

---

## Button Kit



---

### 1048ilss

- 48 buttons DSS (LCD type underlay)
  - Compatible with 1020i, 1030i, 1040i, 1050i, 1080i
- 



---

### 1024idss

- 24 buttons DSS (Paper type underlay)
  - Compatible with 1020i, 1030i, 1040i, 1050i, 1080i
- 



---

### 1048idss

- 48 buttons DSS (Paper type underlay)
  - Compatible with 1020i, 1030i, 1040i, 1050i, 1080i
- 

---

## EHSA

Electronic Hook  
Switch Adapter



---

### Enable remote control for well-known EHS Headsets

- Compatible with 1020i, 1030i, 1040i, 1050i
  - Wired and wireless EHS devices support
  - Stable and better quality operation
  - EHS headset support :
    - Plantronics (Savi 700 series, CS 500 series)
    - Jabra (PRO 920, 925, 9450, 9460, 9470, Duo 9460, 9465)
    - Sennheiser EHS (D10, DW Pro, SDW 5000)
- 



## Digital Phones

### VU-9240



- 320 X 144 graphic LCD with backlit
- 12 Flexible buttons (Dual LED, 12 X 2)
- Full duplex speaker phone
- Support DSS button kit
- Support EHSA

### VU-9224F



- 192 X 36 graphic LCD with backlit
- 24 Flexible buttons (Dual LED)
- Full duplex speaker phone
- Support DSS button kit
- Support EHSA

### VU-9224



- 3 X 24 character LCD without backlit
- 24 Flexible buttons (Dual LED)
- Half duplex speaker phone
- Support DSS button kit
- Support EHSA

### VU-9208



- 2 X 24 character LCD without backlit
- 8 Flexible buttons (Dual LED)
- Half duplex speaker phone
- No Support for DSS Button Kit

### VIP-9824DSS



- Support : VU-9240/24F
- Flexible button : 24 with 3 color LED
- Underlay type : Paper
- DSS connection : 1

### VIP-9812DSS



- Support : VU-9240/24F
- Flexible button : 12 with 3 color LED
- Underlay type : Paper
- DSS connection : 1

### VU-9248DSS



- Support : VU-9240/24F/24
- Flexible button : 48 with 3 color LED
- Underlay type : Paper
- DSS connection : Up to 2

### VIP-9800-EHS

(Electronic Hook Switch Adaptor)



- Support : VU-9240/24F/24
- Compatible with Plantronics, Sennheiser and Jabra
- Package of EHSA & Foot stand
- Sennheiser Cable optional

## IP DECT Bases/Phones

### 100R



#### 100DR—Repeater

- Up to 6 repeaters per 130db/ GDC-800Bi
- 1 repeater per 110db

### 150dh



#### 150dh—Handset

- 2 inch TFT Color LCD
- 200/17 hrs. standby/talk time
- 250 local phonebook
- Emergency button
- P65 compliant
- Pull cord support
- Man-down support
- Bluetooth for headset
- 16 languages
- 3.5mm headset jack

### GDC-800H



#### GDC-800H—Handset

- 2 inch TFT Color LCD
- 200/18 hrs. standby/talk time
- 100 local phonebook
- 16 languages
- Emergency button (ok button)
- 3.5mm headset jack

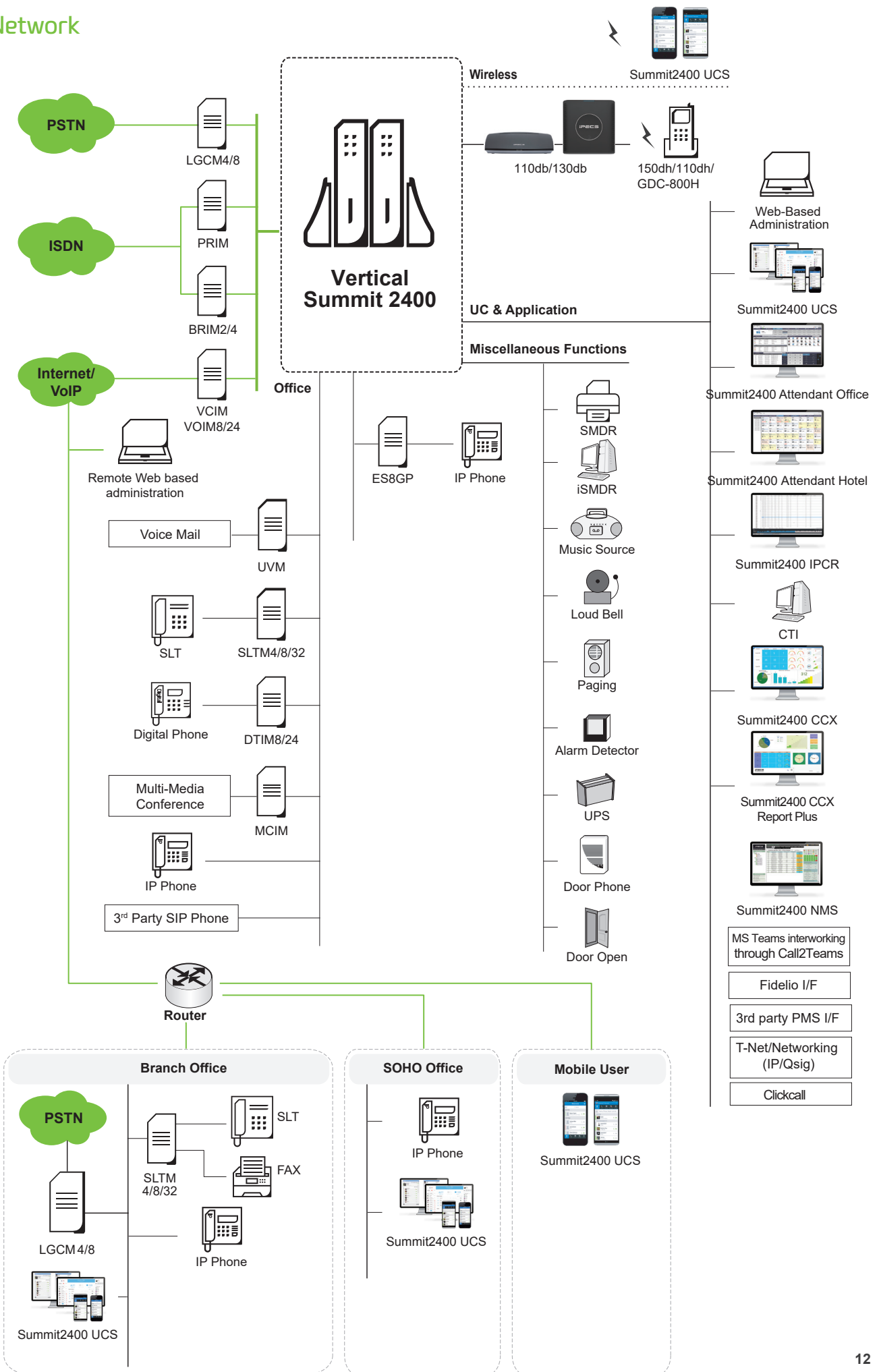
### 120db



#### 120db—Base

- Max 2 base stations in a zone
- Up to 20 handsets registerable
- 10 simultaneous calls per Base Sta.
- Narrow or Wide Band audio
- Mutual Authentication
- Software Upgrade Over The Air
- Air sync
- Central Directory

# Network



## System Capacity

Category		Summit2400-100	Summit2400-600	Summit2400	Virtuali e Summit 2400	Remark
Main cabinet			10 Slot		-	10 <sup>th</sup> slot is for PSU
System ports (Default)		199 (50)	600 (100)	2,400 (600)	2,400 (50)	
IP Extension (Default)		199 (30)	600 (10)	2,400 (10)	2,400 (30)	
CO/IP Line		199	600	998	-	
UCS Standard clients	Default Option 1 (Desktop/Mobile)	2/2	10/10	20/20	-	Only one default option can be used
	Default Option 2 (Advanced User)	2	10	20	2	
	Max	100	200	400	400	
UCS Premium clients		199	600	2,400	2,400	
Clickcall (Default)		199 (2)	600 (10)	2,400 (10)	2,400 (2)	
Server Redundancy	Local/Geographical	-	O / O	O / O	- / O	w/ License for Geographical
Integrated Telephony ports	Standard/option	2FXS/option	-	-	-	4CO or 2BRI or 4BRI
	Built-in VOIP DSP*	2~6	6	-	-	Default
VoIP Channel	Built-in VOIP Switching**	16	24	-	Max. 126ch (default 6ch)	Built-in vVOIM
					Max. 246ch	External vVOIM
	System Max	199	600	998	998	
Built-in Audio Conference***		6/10/14/18	6/18	-	-	
VM	Built-in VM (Default)	8 ch/14 hrs (8/4)	8 ch/16 hrs (8/6)	-	Max. 64ch (8)	Built-in vUVM
	External VM (Default)		16 ch/200 hrs (8/50)		Max. 144ch/500hrs	External vUVM
UVM/vUVM per system			30/1		30/1	
MCIM/vMCIM**** per system			30/30		30/30	
Attendant			50		50	
Serial Port (RS-232C) / USB (3.0) Host Port			1/1		-	

\* In-band/Out-band SIP, Transcoding, Networking, Remote IP Phone/Devices

\*\* Out-band SIP, Networking, Remote IP Phone/Devices

\*\*\* VoIP DSP channels can be assigned to the MCIU, 2 VoIP = 4 Conf channels

\*\*\*\* MCIM supports 4-32 party conferencing

## Power Requirement

Item	Description	Specification
Module AC/DC Adapter	AC Voltage Input	100~240VAC +/- 10% @ 50/60Hz
	AC Current Input	1.0 amps
	DC Output	48 VDC @ 0.8 amps
Keypad AC/DC Adapter	AC Voltage Input	100~240VAC +/- 10% @ 50/60Hz
	AC Current Input	0.2 amps
	DC Output	48 VDC @ 0.3 amps
PSU	AC Voltage Input	100~240VAC +/- 10% @ 50/60Hz
	Fuse	T6.3, AC250V
	DC Output	48 VDC, 5.3 amps/5VDC @ 1 amps

## Dimension & Weight

WxHxD (mm)	Standard Gateway Module	38.8 x 230 x 194.5
	Main Cabinet, Enhanced	440 x 265.6 x 318.2
	19" Rack Mount modules	436.6 x 53 x 318
Weight (Kg)	Standard Gateway Module	1.5
	Main Cabinet, Enhanced (with PSU module)	7.78(9.32)
	19" Rack Mount modules	4.32

## Operating Environment

Temperature	0(°C) - 40(°C)/32(°F) - 104(°F)
Humidity	0 - 80%(Non-condensing)

## System Components

Item	Board	Description
Summit Call Server	Summit2400-100	Vertical Summit Server 100, Basic 50, Up to 199 port
	Summit2400-600	Vertical Summit Server 600, Basic 100, Up to 600 port
	Summit2400	Vertical Summit Server 2400, Basic 600, Up to 2,400 port
	Virtualized Summit2400	Virtual Unified Communications Platform, Basic 50, Up to 2,400 port
Trunk Gateway	VCIM*	VOIP/Audio conference Module (Default 64 DSP channel, upto 128 channel)
	VOIM8/24	8/24 ch VoIP Interface Module
	LGCM4/8	4/8 port Analog CO Interface Module
	BRIM2/4	2/4 BRI(4/8 ch) Interface Module
	PRIM	1 port PRI(30 ch) Interface Module
	vVOIM	250ch Virtual VoIP Interface Module (G.711 only)
	vVOIMT	32 ch Virtual VoIP Interface Module for Transcoding
Extension Gateway	DTIM8/24	8/24 port Digital Line Telephone Interface Module
	SLTM4/8/32	4/8/32 port Single Line Telephone Interface Module
Other Gateway	MCIM	32 ch Multi-media conference interface module
	vMCIM	64 ch Virtual Multi-media conference interface module
	UVM	16 ch / 200 hrs Unified Voice Mail Module
	vUVM	Virtual Unified Voice Mail Module (150 ch / 500 hrs)
	ES8G/ES8GP	8 ports Gigabit switch/ 8 ports Gigabit PoE switch

\* VoIP and Audio Conference can be mixed use. 1 VoIP channel uses 2 DSP channels and 1 Audio Conference channel uses 1 DSP channel

## Virtualized Summit2400 Server Requirements

### VMware

- VMware vSphere ESXi 6.0 or above

### Hardware server requirement

- CPU: Intel Xeon family with 2.0GHz clock speed or higher
- Memory\*: 12G Bytes or higher
- Network: 1 Ethernet interface
- HDD\*: 100G Bytes or higher

\* Must satisfy the ESXi requirements in addition to the specific RAM and HDD requirements of each deployed virtual machine

Category	Virtuali e Summit 2400	vUVM	vVOIM	vVOIMT	vMCIM
CPU	1 vCore	1 vCore	1 vCore	1 vCore	1 vCore
Memory	4G Bytes	4G Bytes	4G Bytes	1G Bytes	1G Bytes
HDD	24G Bytes(App) 1G Bytes(DB data)	24G Bytes(App) 16G Bytes(Voice files)	24G Bytes(App)	8G Bytes(App)	8G Bytes(App)
Network	1 Gigabit	1 Gigabit	1 Gigabit	1 Gigabit	1 Gigabit

### AWS

### Profile of Virtual Machine

Category	Virtuali e Summit 2400	vUVM	vVOIM	vVOIMT	vMCIM
Instance type	t2.micro	t2.micro	t2.micro	t2.micro	t2.micro
HDD	8G Bytes(App) 1G Bytes(DB data)	8G Bytes(App) 16G Bytes(Voice data)	8G Bytes(App)	8G Bytes(App)	8G Bytes(App)
Network	1 Ethernet, DHCP	1 Ethernet, DHCP	1 Ethernet, DHCP	1 Ethernet, DHCP	1 Ethernet, DHCP

### Microsoft Azure

### Profile of Virtual Machine

Category	Virtuali e Summit 2400	vUVM	vVOIM	vVOIMT	vMCIM
VM size	Standard B1s	Standard B1s	Standard B1s	Standard B1s	Standard B1s
HDD	8G Bytes(App) 1G Bytes(DB data)	8G Bytes(App) 16G Bytes(Voice data)	8G Bytes(App)	8G Bytes(App)	8G Bytes(App)
Network	1 Ethernet, DHCP	1 Ethernet, DHCP	1 Ethernet, DHCP	1 Ethernet, DHCP	1 Ethernet, DHCP

#. Please refer to the installation manual for detailed specifications.

