



Borealis™ Cloud Technology

DATA SHEET

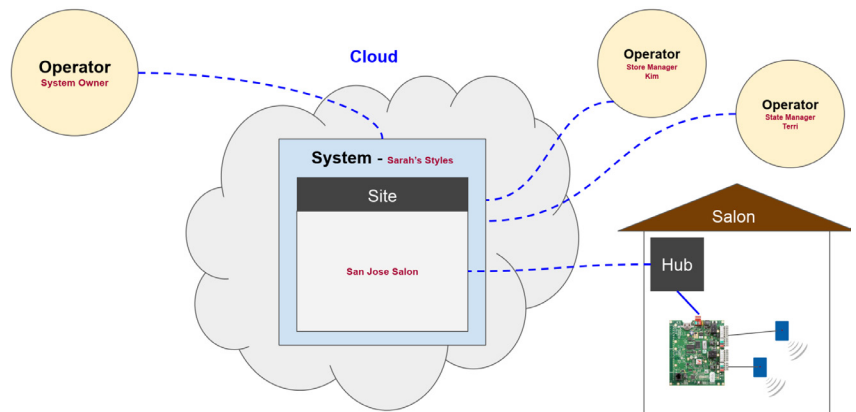


Borealis - Keri's new Cloud Solution for Access Control Management, residing on our secure Aetheros platform.

Borealis enhances the Security Application experience by simplifying previously complicated tasks, delivering global accessibility, scalability and convenience.

SaaS-based, Cloud Architecture increases ROI for installers and opens-up near unlimited possibilities for users of the system.

- SaaS Subscription Based
- Flexible Data Storage Options
- Mobile-friendly User Interface
- Automatic System Updates
- No Software Maintenance Required
- Easy Setup Wizard to Get You Started
- New Visual Hardware Navigation Tool
- Designed to work with Keri's NXT family of controllers



Compatible with: **Keri NXT**
Keri NXT-MSK
(more to come)



www.kerisys.com

302 Enzo Drive • San Jose, California 95138 • email: sales@kerisys.com

Phone: 408-435-8400 • Toll Free: 800-260-5265 • Fax: 408-577-1792

Capacities:

Unlimited Capacities:

- Operators
- Operator Roles
- Systems (soft limit of 10, expandable to ∞)
- Sites
- Hubs
- Custom Cardholder Inputs

Hub V1 Capacities:

- 32 Readers
- Sum of Entry and Exit Readers

Operators:

- One Owner Operator per System
- One or more Operator Role

Cardholder / Credentials

- One or more credentials per cardholder
- One Access Right, per Credential, per Site

Storage Block

- 1M Transactions

System:

- 2000 Credential limit

Requirements:

Browser UI:

- Web UI on Mobile Device - minimum 4G connection
- Web UI on Desktop 100Mbps Ethernet connection and 25Mbps internet connection

Hub:

- 100Mbps DHCP Ethernet connection and 25Mbps internet connection (WIFI not supported)



Borealis Hub V1

Supported Controller

Derived Features:

Keri NXT

- One Entry Reader per Bus
- One NXT-4x4 per Bus
- Remapping REX to Monitor Point
- Remapping Door Monitor to Monitor Point
- Remapping Door Contact to Control Point
- 255 Holidays / 50 Intervals Per Week

NXT-MSK

- One Entry Reader per Bus
- One Exit Reader per Bus
- One NXT-4x4 per Bus
- Remapping REX to Monitor Point
- Remapping Door Monitor to monitor Point
- Remapping Door Contact to Control Point
- 255 Holidays / 12 Intervals

Supported

Controllers:

Keri NXT

- Keri NXT 2D
- Keri NXT 4D

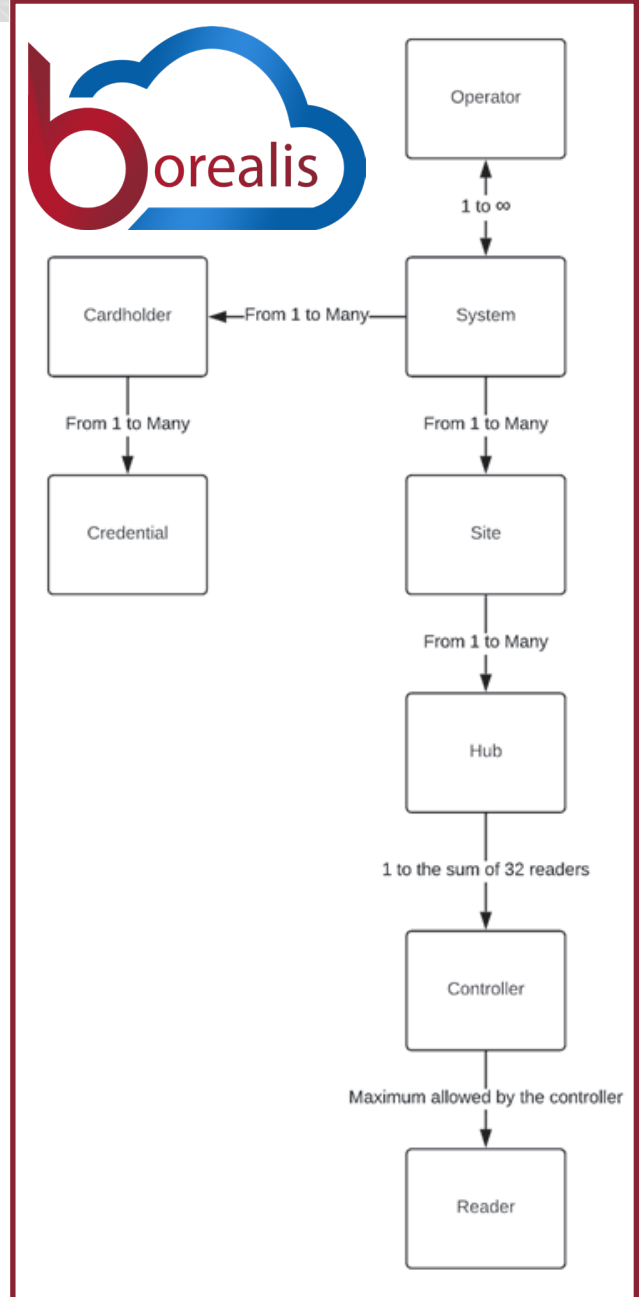
Keri NXT-MSK

- NXT-MSK 2D
- NXT-MSK 4D

Supported

Credential Formats:

- Keri NXT
- Wiegand 26 Bit
- Keri MS
- Raw



Supported Browsers:

Desktop:

- Edge*
- Chrome*
- Safari*
- Firefox*

Mobile:

- Chrome for Android*
- iOS Safari*
- Firefox for Android*

* Version must be no older than three years on all platforms



Presented By: