

**UniFi® | SECURITY GATEWAY**

Enterprise Gateway Router  
with Gigabit Ethernet

Models: USG, USG-PRO-4

Advanced Security, Monitoring, and Management

Sophisticated Routing Features

Integrated with UniFi® Controller Software



## Affordable Enterprise Network Security

Ubiquiti Networks introduces the UniFi® Security Gateway, which extends the UniFi Enterprise System to encompass routing and security for your network.

The UniFi Security Gateway combines reliable security features with high-performance routing technology in a cost-effective unit.

Two models are available:

- **USG-PRO-4** Rack-mountable form factor with fiber connectivity options and a dual-core, 1 GHz processor for maximum hardware-accelerated performance.
- **USG** Wall-mountable form factor with a dual-core, 500 MHz processor for standard hardware-accelerated performance.

## Powerful Firewall Performance

The UniFi Security Gateway offers advanced firewall policies to protect your network and its data.

## Convenient VLAN Support

The UniFi Security Gateway can create virtual network segments for security and network traffic management.

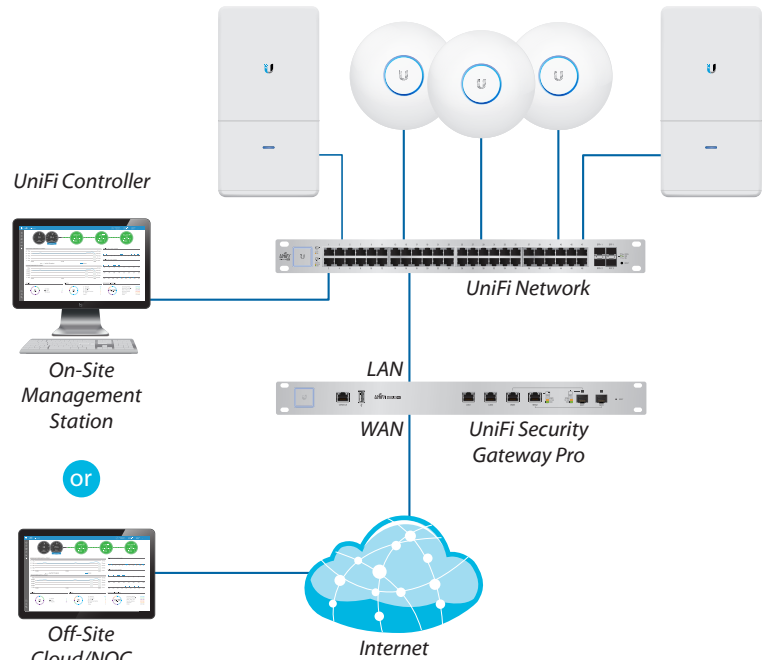
## VPN Server for Secure Communications

A site-to-site VPN secures and encrypts private data communications traveling over the Internet.

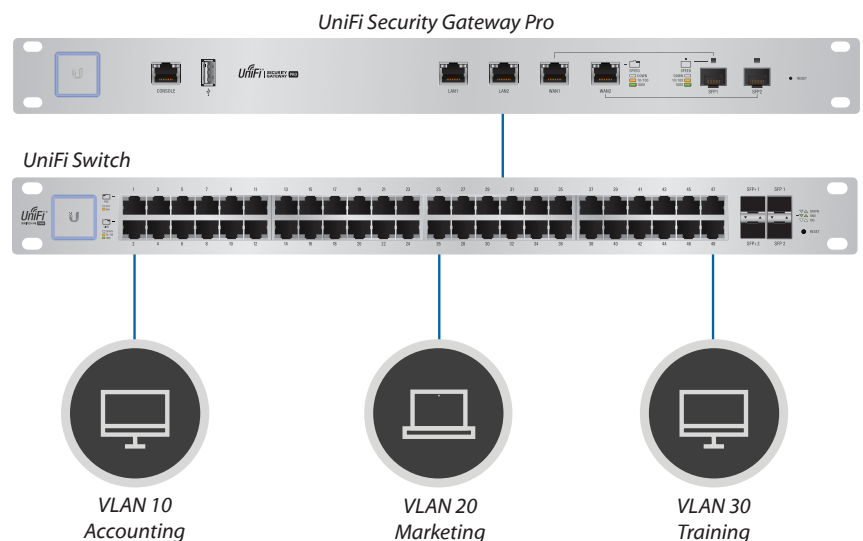
## QoS for Enterprise VoIP and Video

Top QoS priority is assigned to voice and video traffic for clear calls and lag-free, video streaming.

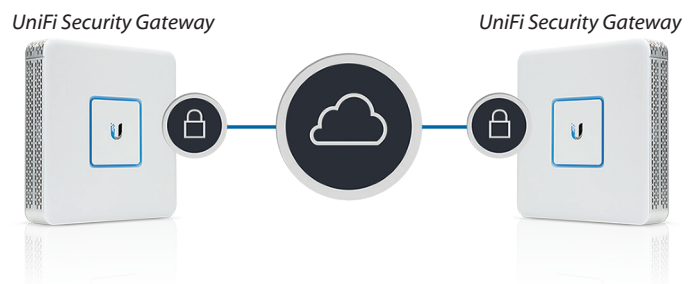
The UniFi Security Gateway is deployed in the same manner as UniFi Access Points for wireless networking. Use the intuitive UniFi Controller to conduct device detection, provisioning, and management.



Example of a UniFi Enterprise System



Network Segmentation with VLAN



Site-to-Site VPN Tunnel

# UniFi Controller

Introducing the new UniFi Controller software featuring a refreshed UI and support for the next generation of UniFi devices.

## Improved User Experience

Redesigned to be more intuitive and easier to navigate, the new UI raises the bar for enterprise network management efficiency. Important network details are logically organized for a simplified, yet powerful, interface.

## Packed with Features

Use the UniFi Controller to provision thousands of UniFi APs and UniFi Security Gateways, map out networks, quickly manage system traffic, and provision additional UniFi devices.

## Network Overview

A comprehensive overview of your Network Health is readily available in the new dashboard. Monitor your network's vitals and make on-the-fly adjustments as needed.

## Detailed Analytics

Use the configurable reporting and analytics to monitor large user groups and expedite troubleshooting. Advanced search and sorting capabilities make network management more efficient.

## Multi-Site Management

A single UniFi Controller running in the cloud can manage multiple sites: multiple, distributed deployments and multi-tenancy for managed service providers. Each site is logically separated and has its own configuration, maps, statistics, guest portal, and administrator read/write and read-only accounts.

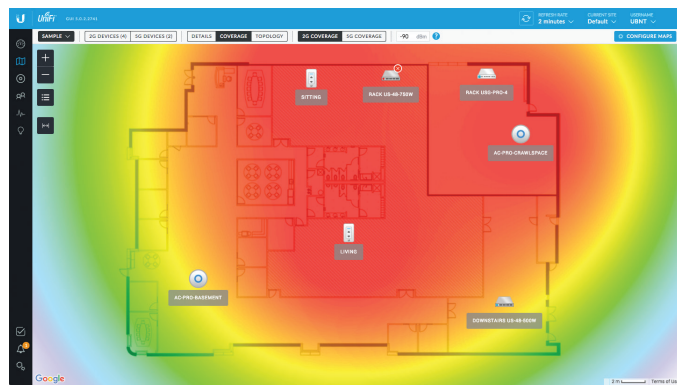
## LAN/WLAN Groups

The UniFi Controller can manage flexible configurations of large deployments. Create multiple LAN and WLAN groups and assign them to the respective UniFi devices.



## Dashboard

UniFi provides a visual representation of your network's status and delivers basic information about each network segment.



## Maps

Upload a map of your location(s) or use Google Maps to represent the areas where your UniFi devices are located.

| DEVICE NAME          | IP ADDRESS    | STATUS    | MODEL                     | VERSION        | UPTIME         | ACTIONS        |
|----------------------|---------------|-----------|---------------------------|----------------|----------------|----------------|
| Rack USG-Pro-4       | 192.168.1.1   | CONNECTED | UniFi Security Gateway AP | 4.3.11.4832827 | 34 58h 45m     | LOCATE RESTART |
| Arlo-US-6-150W       | 192.168.1.233 | CONNECTED | UniFi Switch 16 POE 150W  | 3.5.1.4038     | 395 18h 45m 7s | LOCATE RESTART |
| Downhaul-US-48-500W  | 192.168.1.131 | CONNECTED | UniFi Switch 48 POE 500W  | 3.5.1.4038     | 44 23h 55m 7s  | LOCATE RESTART |
| Wiredhaul-US-48-750W | 192.168.1.246 | CONNECTED | UniFi Switch 48 POE 750W  | 3.5.1.4038     | 34 23h 12m 13s | LOCATE RESTART |
| Rack US-48-750W      | 192.168.1.8   | CONNECTED | UniFi Switch 48 POE 750W  | 3.5.1.4038     | 44 23h 55m 27s | LOCATE RESTART |
| Powerhaul-US-6-150W  | 192.168.1.304 | CONNECTED | UniFi Switch 6 POE 150W   | 3.5.1.4038     | 34 8h 20m 17s  | LOCATE RESTART |
| AC-8000mm            | 192.168.1.201 | CONNECTED | UniFi Switch 8 POE 150W   | 3.5.1.4038     | 44 23h 55m 4s  | LOCATE RESTART |
| AC-LITE              | 192.168.1.162 | CONNECTED |                           |                | 34 23h 17m 32s | LOCATE RESTART |
| AC-LR-Beamform       | 192.168.1.137 | CONNECTED |                           |                | 44 23h 54m 6s  | LOCATE RESTART |
| 44-8P-P2-0433        | 192.168.1.197 | CONNECTED |                           |                | 34 23h 1m 32s  | LOCATE RESTART |
| 44-8P-P2-0444        | 192.168.1.178 | CONNECTED |                           |                | 34 19h 26m 8s  | LOCATE RESTART |
| AC-Pro-Beamform      | 192.168.1.7   | CONNECTED |                           |                | 44 23h 55m 21s | LOCATE RESTART |
| 44-8P-P2-0287        | 192.168.1.200 | CONNECTED |                           |                | 34 8h 7m 12s   | LOCATE RESTART |
| Powerpack UAP-AC-Pro | 192.168.1.182 | CONNECTED |                           |                | 44 23h 55m 46s | LOCATE RESTART |
| AC-Pro-CoverSpace    | 192.168.1.134 | CONNECTED |                           |                | 34 23h 17m 14s | LOCATE RESTART |
| Therap               | 192.168.1.235 | CONNECTED |                           |                | 34 8h 7m 14s   | LOCATE RESTART |
| Living               | 192.168.1.136 | CONNECTED |                           |                | 34 8h 7m 34s   | LOCATE RESTART |
| 300mg                | 192.168.1.134 | CONNECTED |                           |                | 34 8h 7m 34s   | LOCATE RESTART |
| Master               | 192.168.1.138 | CONNECTED |                           |                | 34 8h 7m 32s   | LOCATE RESTART |
| Garage               | 192.168.1.139 | CONNECTED |                           |                | 34 8h 7m 25s   | LOCATE RESTART |
| Basement             | 192.168.1.140 | CONNECTED |                           |                | 34 8h 7m 25s   | LOCATE RESTART |
| 34-6P-76-20-6P       | 192.168.1.123 | CONNECTED |                           |                | 34 23h 22m 34s | LOCATE RESTART |
| Pro-Beamform         | 192.168.1.144 | CONNECTED |                           |                | 34 8h 20m 24s  | LOCATE RESTART |
| Pro-Beamform         | 192.168.1.145 | CONNECTED |                           |                | 34 23h 16m 49s | LOCATE RESTART |

## Device Configuration

The Devices screen displays a list of UniFi devices discovered by the UniFi Controller. You can access each managed device for device details and configuration.

# UniFi® SECURITY GATEWAY PRO

## Model: USG-PRO-4

The USG-PRO-4 offers optional SFP ports for fiber connectivity to support backhaul applications.

- (2) 10/100/1000 RJ45 Ports
- (2) 10/100/1000 RJ45/SFP Combination Ports
- (1) RJ45 Serial Console Port
- Rack-Mounting Capability
- Layer 3 Forwarding Performance
- Packet Size of 64 Bytes: 2,400,000 pps
- Packet Size of 512 Bytes or Larger: 4 Gbps (Line Rate)



Front Panel



Back Panel

# UniFi® SECURITY GATEWAY

## Model: USG

The USG features a compact form factor and fanless operation for discreet integration.

- (3) 10/100/1000 RJ45 Ports\*
- (1) RJ45 Serial Console Port
- Quiet, Fanless Operation
- Wall-Mounting Capability
- Layer 3 Forwarding Performance
  - Packet Size of 64 Bytes: 1,000,000 pps
  - Packet Size of 512 Bytes or Larger: 3 Gbps (Line Rate)

\* VOIP port is available for port remapping in UniFi v5.



Top Panel



Front Panel

# Specifications

| UniFi Security Gateway Pro       |  |
|----------------------------------|--|
| Dimensions                       | 484 x 44 x 164 mm<br>(19.06 x 1.73 x 6.46")                              |
| Weight                           | 2.3 kg<br>(5.07 lb)  |
| Max. Power Consumption           | 40W  |
| Power Supply                     | Internal AC/DC Power Adapter, 60W (24V, 2.5A)                            |
| Power Input                      | 110 - 240VAC   |
| LEDs                             | Status   |
| System                           | Speed/Link/Activity  |
| Data Ports                       |  |
| Networking Interfaces            |  |
| Serial Console Port              | (1) RJ45 Serial Port   |
| Data Ports                       | (2) 10/100/1000 RJ45 Ports<br>(2) 10/100/1000 RJ45/SFP Combination Ports |
| Layer 3 Forwarding Performance   |  |
| Packet Size: 64 Bytes            | 2,400,000 pps  |
| Packet Size: 512 Bytes or Larger | 4 Gbps (Line Rate)   |
| Processor                        | Dual-Core 1 GHz, MIPS64 with Hardware Acceleration for Packet Processing |
| System Memory                    | 2 GB DDR3 RAM  |
| On-Board Flash Storage           | 4 GB   |
| Certifications                   | CE, FCC, IC  |
| Rackmount                        | Yes  |
| Operating Temperature            | -10 to 45° C<br>(14 to 113° F)   |
| Operating Humidity               | 10 to 90% Noncondensing  |



# Specifications

| UniFi Security Gateway           |  |
|----------------------------------|--|
| Dimensions                       | 135 x 135 x 28.3 mm<br>(5.32 x 5.32 x 1.11")                               |
| Weight                           | 366 g<br>(12.9 oz)   |
| Max. Power Consumption           | 7W   |
| Power Supply                     | 12VDC, 1A Power Adapter (Included)   |
| Power Input                      | 9 to 24VDC, Supported Voltage Range  |
| LEDs                             | Status<br>Power<br>Speed/Link/Activity                                     |
| Networking Interfaces            | (1) RJ45 Serial Port<br>(3) 10/100/1000 Ethernet Ports*                    |
| Layer 3 Forwarding Performance   | 1,000,000 pps<br>3 Gbps (Line Rate)  |
| Packet Size: 64 Bytes            |  |
| Packet Size: 512 Bytes or Larger |  |
| Processor                        | Dual-Core 500 MHz, MIPS64 with Hardware Acceleration for Packet Processing |
| System Memory                    | 512 MB DDR2 RAM  |
| On-Board Flash Storage           | 2 GB   |
| Certifications                   | CE, FCC, IC  |
| Wall-Mountable                   | Yes  |
| Operating Temperature            | -10 to 45° C<br>(14 to 113° F)   |
| Operating Humidity               | 10 to 90% Noncondensing  |

\* VOIP port is available for port remapping in UniFi v5.

