

Hikvision Highly Accurate Thermographic Cameras

SAFER, FASTER, SMARTER

With advanced detectors and algorithms, Hikvision's new Highly Accurate Thermographic Cameras can be used for immediate detection and preliminary screening of elevated skin-surface temperature with accuracy up to $\pm 0.5^{\circ}\text{F}$ (0.3°C).

High Efficiency
One second
to detect temperature

Increased Safety
Non-contact
measurement
from a distance

Disclaimer: Hikvision products depicted herein are not medical devices and are not intended for use in the diagnosis of disease or other conditions, or in the cure, mitigation, treatment, or prevention of disease, in man or other animals. When configured correctly, the Hikvision products discussed herein can identify individuals showing higher than average skin temperature relative to a sample population.

Temperature Screening Solutions

1 Handheld Camera + Tripod + iVMS-4200 or Hik-Thermal (Mobile app)

Accuracy: $\pm 0.9^{\circ}\text{F}$



With a Wi-Fi module, the TP21B handheld camera can connect to a PC with iVMS-4200, or a smartphone with the Hik-Thermal app, to notify operators when an elevated temperature is detected. It also features a built-in speaker for audible alarms.

2 Turret/Bullet Camera + Tripod/Bracket + iVMS-4200 and/or NVR + Laptop

Accuracy: $\pm 0.9^{\circ}\text{F}$



The turret and bullet cameras feature smart detection to reduce false alarms caused by other heat sources. Up to 30 individuals can be detected and measured at once.

3 Turret/Bullet Camera + Blackbody Calibrator + Tripod/Bracket + iVMS-4200 and/or NVR + Laptop

Accuracy: $\pm 0.5^{\circ}\text{F}$



Add the Hikvision blackbody calibration source to a turret or bullet camera solution to increase temperature measurement accuracy to $\pm 0.5^{\circ}\text{F}$ (0.3°C)

Features of Solutions

Smart Detection

Focuses temperature measurement areas on human bodies to avoid false alarms caused by other heat sources

Advanced Algorithms

Achieve high accuracy with Hikvision's proprietary temperature measurement algorithms

Bi-Spectrum Monitoring

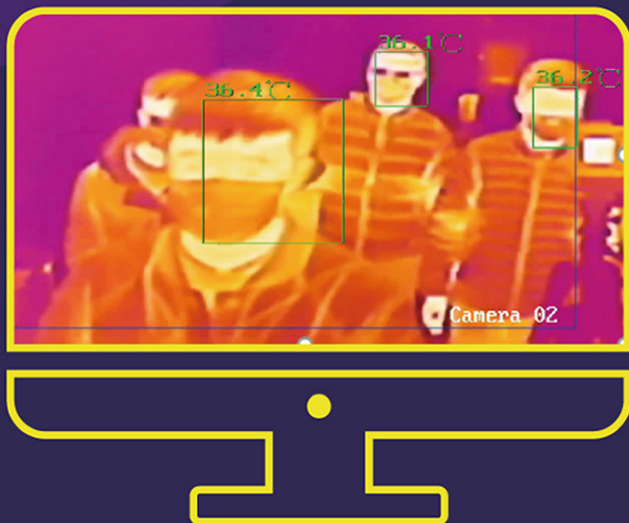
Provides both thermal and optical image channels apart from temperature measurement

Embedded Audio Alarm

Triggers alarms to notify operators immediately when an abnormal temperature is detected

One-Stop Solution

Hikvision offers an extensive product portfolio including thermal cameras, network switches, NVRs, monitors, etc.



Highly Accurate Thermographic Cameras

Operation Tips



Install the thermal camera in a windless, indoor environment



Draw a line on the floor to perform screening with an ideal distance between the camera and the tested persons

Primary Applications



Education & Daycare



Healthcare Facilities



Essential Businesses

DS-2TD2636B-13/P



Smart Detection

384*288 thermal resolution
13 mm thermal lens
(Recommended camera-target distance 8.2-23 ft)
4 MP optical camera with 6 mm lens

DS-2TD2617B-6/PA



Smart Detection

160*120 thermal resolution
6 mm thermal lens
(Recommended camera-target distance 4.9-9.8 ft)
4 MP optical camera with 8 mm lens

DS-2TD1217B-3/PA



Smart Detection

160*120 thermal resolution
3 mm thermal lens
(Recommended camera-target distance 2.6-4.9 ft)
4 MP optical camera with 4 mm lens

DS-2TP21B-6AVF/W



Wi-Fi

160*120 thermal resolution
8 MP resolution optical camera
6 mm thermal lens
(Recommended camera-target distance 3.3-6.6 ft)

HIKVISION