



# AUDIO **24** CATALOG vol. 63

Commercial & Residential Audio Products

**Amplifiers, Speakers, & Accessories**

Now available in IP, 70V, & 8 Ohms

**speco**  
technologies

# TABLE OF contents

2	<b>Speco Introduction</b>	
3	<b>What's New</b>	
4	<b>IP Audio</b>	
5-6	<b>Multiroom Audio</b>	
7	<b>Commercial PA Amplifiers</b>	
8	Amplifier Technical Reference	
9-10	PBM-A Series Commercial Public Address Amplifier	
11	Commercial Public Address Amplifiers	
12	160W Four Zone Commercial Matrix Amplifier	
13	500W Commercial 70v Power Amplifier	
14	Seven Zone 260 Watt Commercial Public Address Amplifier	
15-16	UL Listed Contractor Series Amplifiers	
17	PVL Series Amplifiers	
18	20 Watt Talk-Back Mobile Amplifier	
19-20	<b>Megaphones</b>	
21	<b>Amplifier Reference Chart</b>	
	<b>Commercial Speakers</b>	
22	IP Audio Speaker	
23-24	Nexus™ UL Contractor Series Speakers	
25	MA Outdoor Series Speakers	
26	MA Indoor Series Speakers	
27-32	86 Series Contractor Speakers	
33-37	Specialty Commercial Speakers	
38-40	Indoor/Outdoor Commercial Speakers	
41-42	<b>Mini Communication Speakers</b>	
	<b>Microphones</b>	
43	Wireless Microphones	
44-45	Wired Microphones	
	Microphone Accessories	
46	<b>Transformers</b>	
	<b>12VDC Power Supply</b>	
	<b>Strobes</b>	
	<b>Audio Accessories</b>	
47	HDMI® Cables	
48	HDMI® Accessories	
49	Audio Accessories	
	<b>PA Horns</b>	
50-51,54	8 Ohms Horns	
52-53	70V Horns	
55	Vertical Mount Horns	
	Sirens	
56	Horn Casings and Drivers	
	Amplified Horns	
57	<b>DVR Audio Accessory Kits</b>	
58	Amplified Weather-Resistant ABS P.A. Horn Speaker	
59	<b>Commercial Volume Controls</b>	
60	<b>Residential Speakers</b>	
61-62	Custom Series In-Ceiling Residential Speakers	
63	Contractor Series Enclosed In-Ceiling Residential Speakers	
64	Series 25 In-Ceiling Residential Speakers	
65	Contractor Elite Indoor/Outdoor Wall-Mount Residential Speakers	
	Audio Speaker Accessories	
66	<b>Speaker Supports</b>	
	<b>Residential Volume Controls</b>	
67-72	<b>Commercial Audio Guide</b>	
73	<b>Warranty Information</b>	
74	<b>Glossary of Audio Terms</b>	
75	<b>Index</b>	



# About us

While much has changed since we sold our first speaker in 1960, one thing has remained constant: customers want as much quality as possible for the lowest cost. Speco Technologies has built its business around a basic philosophy to manufacture high quality products that are packed with features. In fact, we are so confident in their quality that we offer the best warranties in the business for prices less than many other manufacturers. We put our 60+ years of experience into every product launch and strive to set the benchmark for affordable commercial and residential sound equipment. Our focus is on small- to mid-sized paging, background music, and foreground music installations, but our products are versatile enough to be used in almost any environment.

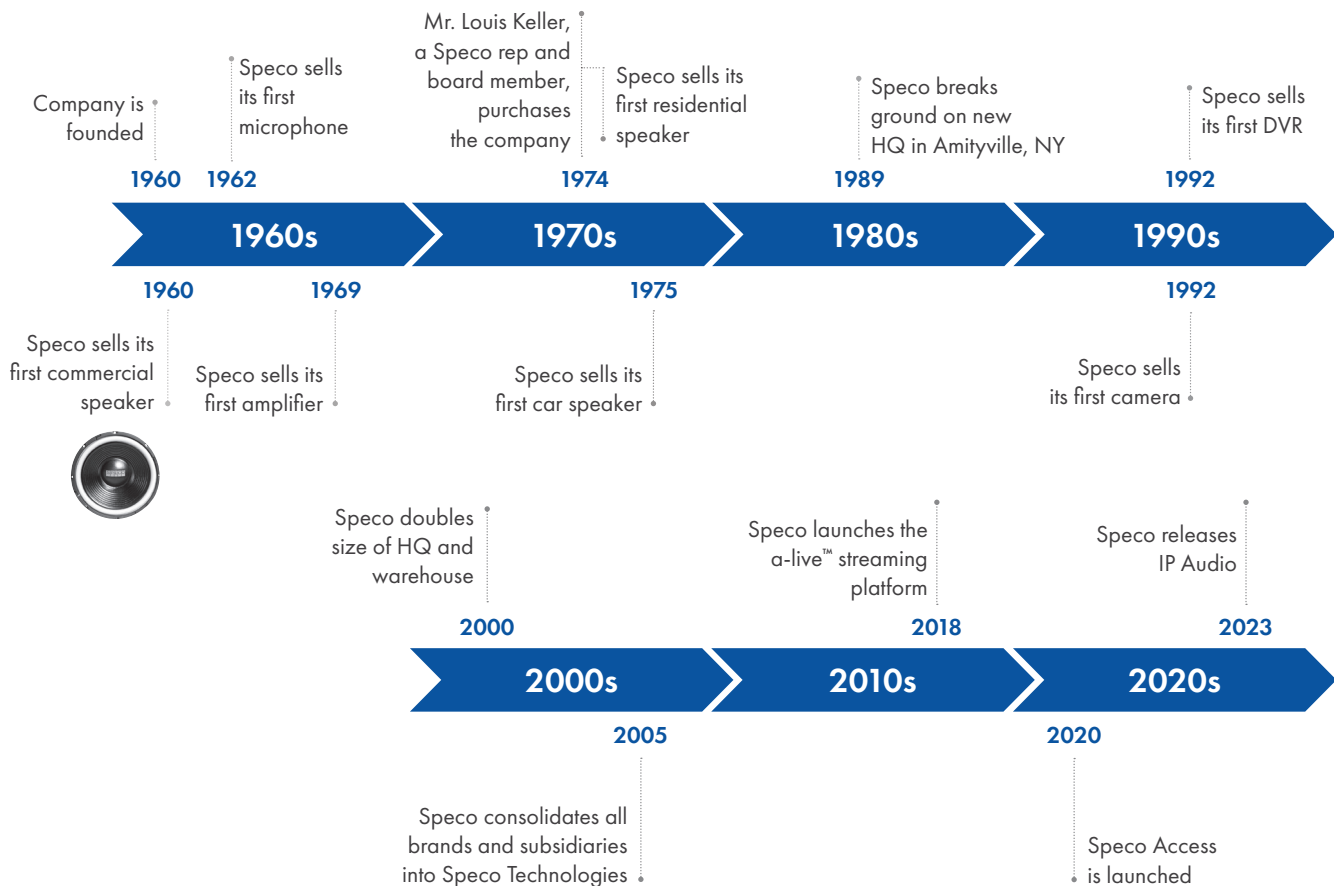
Not many companies stick around long enough to estimate that millions of their speakers have been

sold & installed worldwide, but it's thanks to our loyal customers over the years that Speco Technologies has become the company it is today. We plan to make the next 60 years even better and continue to grow. Convenience, quality, affordability, support and reliability. It's those 5 words that best describe who we are and what we can provide you in a combined package that few, if any, manufacturers can offer.

**speco technologies**  
Giving You More.

For those familiar with Speco Technologies, we thank you from the bottom of our hearts for your business and hope to continue to be your top choice for audio products. Speco has always been a family owned company, and we truly feel our customers are a part of our family. For those just meeting Speco Technologies today, we welcome you and urge you to reach out to us at any time with any questions you might have and we will do our best to let you know who we are and how we can help your business grow.

## 60+ Years of Quality Products and Services



# WHAT'S NEW? IP AUDIO!



## SPIPC6A 15W IP Ceiling Speaker

### Features

- Works with Speco Audio Manager Software
- Compatible with SecureGuard® VMS via ONVIF
- Supports pre-recorded messages, schedules, and alarm trigger



## SPIPH8AM 15W IP Horn Speaker with Built-in Microphone

### Features

- Works with Speco Audio Manager Software
- Compatible with SecureGuard® VMS via ONVIF
- Supports pre-recorded messages, schedules, and alarm trigger
- IP67 waterproof design is ideal for outdoor installations



## SPIPG66T 6.5" IP Ceiling Speaker

### Features

- Works with Speco Audio Manager Software
- Compatible with SecureGuard® VMS via ONVIF
- Supports pre-recorded messages, schedules, and alarm trigger



## SPIPC6AM 15W IP Ceiling Speaker with Built-in Microphone

### Features

- Works with Speco Audio Manager Software
- Compatible with SecureGuard® VMS via ONVIF
- Supports pre-recorded messages, schedules, and alarm trigger



## SPIPH9AM 30W IP Horn Speaker with Built-in Microphone

### Features

- Works with Speco Audio Manager Software
- Compatible with SecureGuard® VMS via ONVIF
- Supports pre-recorded messages, schedules, and alarm trigger
- IP67 waterproof design is ideal for outdoor installations



## SPIPG86TG 8" IP In-Ceiling Steel Panel Speaker

### Features

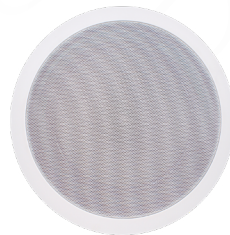
- Works with Speco Audio Manager Software
- Compatible with SecureGuard® VMS via ONVIF
- Supports pre-recorded messages, schedules, and alarm trigger



## SPIPH8A 15W IP Horn Speaker

### Features

- Works with Speco Audio Manager Software
- Compatible with SecureGuard® VMS via ONVIF
- Supports pre-recorded messages, schedules, and alarm trigger
- IP67 waterproof design is ideal for outdoor installations



## SPIPG86T 8" IP In-Ceiling Steel Panel Speaker

### Features

- Works with Speco Audio Manager Software
- Compatible with SecureGuard® VMS via ONVIF
- Supports pre-recorded messages, schedules, and alarm trigger



## SPIP200M IP Audio Encoder

### Features

- Turn your speakers into network IP Speakers
- Works with most 8 Ohm Speakers
- Supports Two-way communication

# IP Audio Solutions to Help **YOUR** Business Thrive



## What can Speco's IP Audio do for you?

Speco's IP Audio allows easy installation with a single network cable (PoE). These speakers offer a scalable system to build on with a sleek look and premium sound quality.

Take advantage of Two-way audio support on select models to speak to patrons in real time. Easily integrate audio with Speco's state-of-the-art video surveillance systems. All models are compatible with VoIP and SIP Devices (IPPBX, IP Phone) via SIP.



## What are some ideal applications for Speco's IP speakers?

- Commercial settings: retail stores, restaurants, and hotels
- Residential settings: multi-family housing and apartments
- Educational settings: schools and universities

## Control these speakers with Speco Audio Manager

With Speco Audio Manager software, conveniently unlock the full potential of IP audio with RTP multicasting, SIP Trunk capabilities, Multi-zoning, the ability to create schedules, stream live radio, and utilize the built-in bell feature. Access all of these great features with **NO LICENSING FEE!**







# Multi-Room Audio Streaming

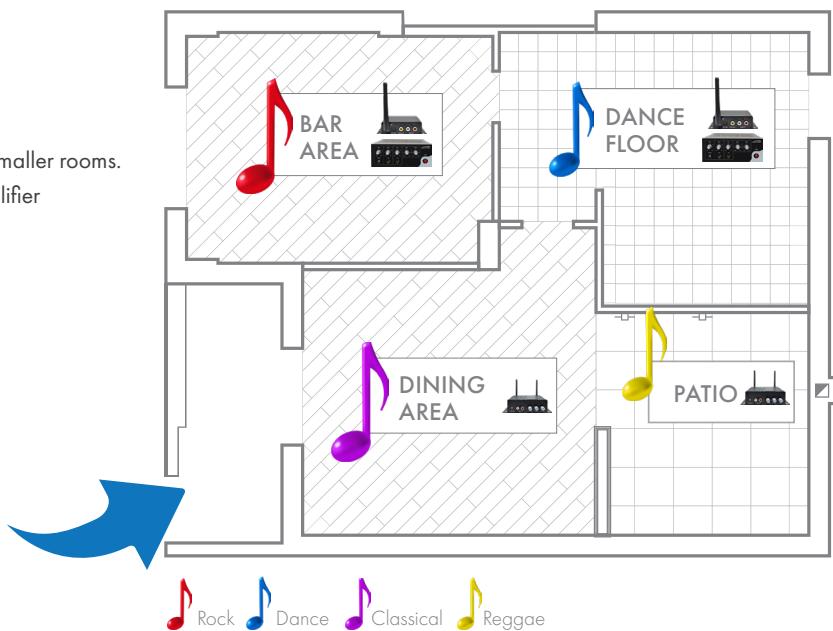
## Residential Solution

- Fill up to 12 rooms in a home with music.
- Control all from the a-live app.
- Multiple users can access simultaneously.
- Use the AA1 with a couple of speakers for smaller rooms.
- Use the AS1 with a receiver or external amplifier to fill bigger rooms or the backyard.

## Commercial Solution

- Play background music in up to 12 zones.
- Control all from the a-live app.
- Multiple users can access simultaneously, but only users with access to the wifi network can control the a-live units.
- Ideal for installations where different music could be played in different zones at the same time such as Gyms, Tanning salons, offices, and bars/restaurants (see example).

sample bar/restaurant installation:





# Stream. Control. Entertain.

## Small Room Solution

1-2 speakers

### AA1

2x 80W Amplifier

The a-live™ AA1 is a two channel amp with built-in streaming capability. This unit is ideal in rooms where you only need a couple speakers

- 2x80W @ 8 ohms
- Control volume from unit or apps
- Bass & Treble controls
- Line input and output
- Stream some of the most popular music services



## Large Room Solution

3 or more speakers

### AS1

Multi-room Streamer Unit

The a-live™ AS1 can be connected to any amplifier or receiver and stream music to countless speakers to fill rooms of all sizes

- Line input and output
- Connected directly to an amplifier
- Stream some of the most popular music services



## Bundle + Save!

**AACEK1B = AA1+ SPCE50B** (Page 63)

**AACEK1W = AA1+ SPCE50W** (Page 63)

Speco is now offering the

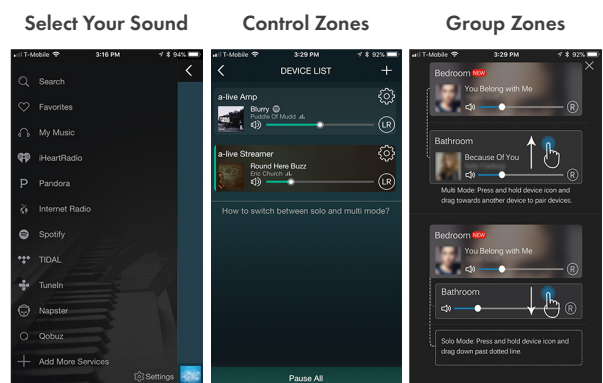
## Ultimate Entertainment Solution!

Have full control through your mobile device as it streams music from different apps to multiple zones throughout an installation



Spotify®, Napster®, iHeart Radio®, and Tidal® names, logos, and brands are property of their respective owners. All company, product and service names used in this catalog are for identification purposes only. Use of these names, logos, and brands does not imply endorsement.

## ASBPMK1 = AS1+ PBM120A (Page 7)



Screenshots from a-live™ app

Available in  
the IOS App Store  
& Google Play



# Commercial Audio

SEE PAGE 60 FOR RESIDENTIAL AUDIO



**COMPLETE SOLUTIONS**

**speco technologies**  
Giving You More.

# PBM240A • PBM240AT • PBM240AU PBM120A • PBM120AT • PBM120AU PBM60A • PBM60AT • PBM60AU

## Ideal for:

- Retail
- Education
- Hospitality
- Offices
- Government
- Transit
- Warehouse
- Many more

## Features:

- Includes IR remote and rack-mounting kit
- 5 zoned 70 or 25V speaker outputs (60 & 120), 240W - 70V only
- Non-zoned 4/8/16 Ohms output (60 & 120, No 16 Ohms on 240W)
- Master digital volume control with display
- Individual volume control for each input
- RCA or XLR line output
- Telephone paging input and Music-on-hold output
- RS232 input for integration with popular control systems
- Front bass and treble controls
- Phantom power for all Mic inputs, and Mic1 selectable priority paging
- Digital front panel lock

Part Number	PBM240A/T/U	PBM120A/T/U	PBM60A/T/U
RMS Output Power	240W	120W	60W
Max Output Power	480W	240W	120W
AC Power Consumption	320W	200W	100W
Power Supply	AC 115V, 60Hz	AC 115V, 60Hz	AC 115V, 60Hz
Zones	5	5	5
Speaker Outputs	4/8 Ohms (non-zoned), 70V (zoned)	4/8/16 Ohms (non-zoned), 70/25V (zoned)	4/8/16 Ohms (non-zoned), 70/25V (zoned)
Other Outputs	Aux (RCA or XLR)	Aux (RCA or XLR)	Aux (RCA or XLR)
Inputs	1 x AM Antenna (Press terminal), 1 x FM Antenna (BNC), 3 x Aux (Stereo RCA), 3 x Mic (XLR), 1 x RS-232, 1 x TEL (terminal)	1 x AM Antenna (Press terminal), 1 x FM Antenna (BNC), 3 x Aux (Stereo RCA), 3 x Mic (XLR), 1 x RS-232, 1 x TEL (terminal)	1 x AM Antenna (Press terminal), 1 x FM Antenna (BNC), 3 x Aux (Stereo RCA), 3 x Mic (XLR), 1 x RS-232, 1 x TEL (terminal)
Frequency Response	50Hz ~ 20kHz	50Hz ~ 20kHz	50Hz ~ 20kHz
Tone Control	Bass ± 10dB, Treble ± 10dB	Bass ± 10dB, Treble ± 10dB	Bass ± 10dB, Treble ± 10dB
THD	Less than 1% @ 1kHz	Less than 1% @ 1kHz	Less than 1% @ 1kHz
Signal/Noise Ratio	>88dB	>89dB	>88dB
Controls	Volume for each source, Master Volume, Vox Volume, MoH Volume, Tone, Source Selector, Zone Selector, Module	Volume for each source, Master Volume, Vox Volume, MoH Volume, Tone, Source Selector, Zone Selector, Module	Volume for each source, Master Volume, Vox Volume, MoH Volume, Tone, Source Selector, Zone Selector, Module
Telephone	TEL in and MoH Out	TEL in and MoH Out	TEL in and MoH Out
Indicators	Volume level, power, source, & system lock	Volume level, power, source, & system lock	Volume level, power, source, & system lock
Dimensions	16.9" (W) x 3.4" (H) x 11.75" (D)	16.9" (W) x 3.4" (H) x 11.75" (D)	16.9" (W) x 3.4" (H) x 11.75" (D)
Weight	18 lbs.	26.5 lbs. (PBM120A), 27.5 lbs. (PBM120AT), 30.4 lbs. (PBM120AU)	20 lbs. (PBM60A), 21 lbs. (PBM60AT), 24.3 lbs. (PBM60AU)
Includes	IR remote control, rack mounting hardware	IR remote control, rack mounting hardware	IR remote control, rack mounting hardware
Listings	CE, FCC, RoHS	CE, FCC, RoHS	CE, FCC, RoHS



IR remote included



Rack mounting kit included



## PBM-A Series Commercial Public Address Amplifiers

The PBM-A Series represents the next generation of Speco Technologies' commercial public address amplifiers. We have taken customer input and created the perfect amplifier for almost any application. In addition to the great features you've come to expect, the PBM-A series has ample inputs, an included IR remote control, an RS232 input for integration with control systems, front panel locking capability, and includes all rack-mount hardware. With a stylish appearance and all these additional features at a price similar to previous generation amplifiers, the PBM-A series is sure to become your go-to unit.

PBM60A  
PBM120A  
PBM240A



P.A. Amplifier with AM/FM Tuner

PBM60AT  
PBM120AT  
PBM240AT



P.A. Amplifier with Tuner, CD and USB

PBM60AU  
PBM120AU  
PBM240AU



Rear View  
For PBM60/120A



Rear View  
For PBM240A





# Amplifier Worksheet

Please reference commercial audio guide on page 10 for speaker wattage information.

## Which Wattage Amplifier Do I Need?

Normally, to arrive at the necessary wattage requirement for an amplifier in a particular location, you will need to take the total sum of wattage you need, (considering all speakers, horns and their wattage tap settings) then add a 20 percent safety buffer. The worksheet to the right will aid in calculating this requirement.

### Determining Your Amplifier Needs for Sound Systems

**Step 1:** Fill out Wattage Tap Requirement Chart (at right) to determine the number of speakers that will be used at each wattage tap for the amplifier.

**Step 2:** Multiply the number of speakers by each wattage tap to determine total wattage requirement per tap setting (See Example A).

**Step 3:** Add all the figures in the shaded area to determine the total wattage requirement for the amplifier.

**Step 4:** Match the total wattage requirement to the chart on the next page "Recommended Amplifier Wattage Chart" to determine acceptable RMS wattage the amplifier should have.

**Step 5:** Repeat this process for each amplifier system.

### Wattage Tap Requirement Chart

	Set Wattage Taps	×	Number of Speakers at Set Tap	=	Total Wattage Requirement per Tap
<b>Example A</b>	5	x	10	=	50W
	60	x		=	
	30	x		=	
	20	x		=	
	15	x		=	
	10	x		=	
	7.7	x		=	
	5	x		=	
	4	x		=	
	3.75	x		=	
	2.5	x		=	
	2	x		=	
	1.50	x		=	
	1.25	x		=	
	1.00	x		=	
	0.50	x		=	
	0.25	x		=	
	0.125	x		=	

Noise Level	Decibel	Environment	Wattage Tap*
Low	55dB-64dB	Corporate Office	0.25-2.5
		Doctor's Office	0.5
		Classroom	0.5-5
		Convenience Store	1
		Department Store	1-2.5
Medium	65dB-74dB	Restaurant	2
		Warehouse	2-10
		Hospital	2-5
		Supermarket	2-5
High	75dB-84dB	Bar	5-20
		Factory	7.5-40
		Assembly Line	15-50
Maximum	85dB+	Printing Press	30+
		Metal Shop	40+

\*taps vary depending on ceiling height and ambient noise

# Commercial Public Address Amplifiers

Speco Technologies Professional (P) series of amplifiers feature built-in sources and a wealth of inputs and outputs to serve as the ideal amplifier for a vast number of installations. This series offers a 60W model with a built in CD/tuner combo. This series can help save you money as the built-in sources not only conserve valuable installation and rack space by combining multiple units into one, but also are available at a price less expensive than buying components of this quality separately.

## P60FACD

60W RMS P.A. Amplifier with Built-in AM/FM Tuner & MP3-Ready CD Player

### Features:

- 4 zoned 70 or 25V speaker outputs
- AM/FM Tuner with 8-function CD player
- Telephone paging input and Music-on-hold output
- Individual volume control for each Mic input
- Front bass and treble controls
- Mic1 selectable priority paging
- UL & CSA listed



Part Number	P60FACD		
RMS Output Power	60W	THD	Less than 1% @ 1kHz
Max Output Power	90W	Signal/Noise Ratio	>70dB
AC Power Consumption	170W	Controls	Volume for each Mic, Master Volume, Vox Volume, MoH Volume, Vox Selector, Tone, Source Selector, Zone Selector, Tuner and CD
Power Supply	AC 115V, 50Hz/60Hz	Telephone	TEL in and MoH Out
Zones	4	Indicators	Tuner, CD, power, power level
Speaker Outputs	4/8/16 Ohms (non-zoned), 70/25V (zoned)	Dimensions	16.9" (W) x 3.5" (H) x 11.6" (D)
Other Outputs	Aux (RCA)	Weight	21.4 lbs.
Inputs	1 x AM Antenna (Press terminal), 1 x FM Antenna (BNC), 1 x Aux (Stereo RCA), 4 x Mic (XLR), 1 x TEL (terminal)	Includes	Antenna
Frequency Response	60Hz ~ 15kHz (±3dB)	Optional Accessories	PBMRK2 rack mounting kit
Tone Control	Bass ± 10dB, Treble ± 10dB	Listings	UL, cUL, CSA, CE, FCC

# 160W Four Zone Commercial Matrix Amplifier

The PL200M offers a set of features very unique to the industry. As a Matrix amplifier, this advanced unit lets you route up to 5 separate inputs to 4 distinct zones, which allows simultaneous play of a different source in each zone. Assigning a source to a zone is as simple as pressing a button on the front panel and each source has its own separate gain, treble, bass and volume controls. A high degree of engineering went into this unit and it can accomplish in a very cost-effective manner what formerly required a high-end digital system or multiple amplifiers.

## PL200M

### Features:

- Simultaneous playback of 5 sources in 4 zones
- 4 sets of 4/8 Ohms or 70/25V outputs
- Telephone paging interface and limited music on hold functionality via a monitor output
- Mic1 selectable priority paging with internal toggle
- Energy saving intelligent cooling fan
- Separate controls (gain, bass, treble, volume) and mute for each source
- Separate volume control and LED power indicator for each zone
- Rack-mount design with built-in handles (3U)
- 3 combination XLR/ 1/4" inputs with selectable phantom power, line level or mic level

### Ideal for:

- Hotels
- Funeral Homes
- Bars/Restaurants
- Tanning Salons
- Offices
- Transit
- Warehouse
- Many more



Part Number	PL200M
RMS Output Power	40W (Per zone for 160W total)
Max Output Power	90W (Per zone for 360W total)
AC Power Consumption	400W (total)
Power Supply	AC 115V/230V, 60/50Hz
Zones	4
Speaker Outputs	4/8 Ohms, 70/25V (per zone)
Other Outputs	Aux (terminal) (per zone)
Inputs	3 x Mic/Aux inputs (Combo XLR 1/4"), 2 x Aux (Stereo RCA), 1 x TEL (terminal)
Frequency Response	50Hz ~ 17kHz (±3dB)
Tone Control	Bass ± 10dB, Treble ± 10dB
THD	Less than 0.5% @ 1kHz
Signal/Noise Ratio	Microphone: >55dB, Line: >60dB
Controls	Volume for each source, Volume for each zone, Volume for monitor, Volume for headphone, Zone selector for each source, Monitor selector for each zone, Input type selector
Telephone	TEL in and MoH Out
Indicators	Tuner, CD, power, power level
Dimensions	16.9" (W) x 3.5" (H) x 11.6" (D)
Weight	21.4 lbs.
Includes	Built-in rack mount
Listings	CE, FCC, RoHS

## 5 Sources (sold separately)



## 4 Zones

# 500W Commercial 70V Power Amplifier

The P500A serves a very specialized role in Speco Technologies' lineup of amplifiers: to work in conjunction with a mixer amplifier or preamplifier to significantly boost the power in any given installation and accommodate large numbers of commercial speakers. This amplifier utilizes Class D amplifier technology, which means it is extremely lightweight (18 lbs.) and runs very cool despite the high amount of power being sent to the speakers.

## P500A

### Features:

- Single speaker output works with either 70V or 8 Ohm speakers
- Auxiliary inputs and outputs to "daisy-chain" amplifiers
- Class D amplification
- Built-in rack mount



Part Number	P500A		
RMS Output Power	500W	THD	Less than 0.1% @1KHz
Max Output Power	1000W	Signal/Noise Ratio	>90dB
AC Power Consumption	<720W	Controls	Master Volume
Power Supply	AC 110V-120V, 50/60Hz	Telephone	n/a
Zones	1	Indicators	Power, power level
Speaker Outputs	8 Ohms, 70V	Dimensions	19" (W) x 3.46" (H) x 15.75" (D)
Other Outputs	Aux (XLR)	Weight	18 lbs.
Inputs	1 x Aux (XLR or terminal)	Includes	Built-in rack mount
Frequency Response	70Hz ~ 18kHz (±3dB)	Listings	CE, FCC, RoHS
Tone Control	n/a		



# Seven Zone 260 Watt Commercial Public Address Amplifier

Speco Technologies' Platinum 260 model (PL260A) delivers 260 Watts of RMS power while featuring seven 25 or 70V speaker zones. A 24 Volt battery backup input terminal delivers reassurance in the event of a power failure, protecting internal communications. Five XLR microphone connectors with individual phantom power switches and three auxiliary jacks offer ample inputs to cover almost any end user need.

## PL260A

### Features:

- Seven front-selectable 70/25V speaker zones
- 24 Volt input for emergency backup power
- Separate bass and treble controls
- Each XLR microphone input has a phantom power toggle
- Mic1 selectable priority paging

Ideal for most mid-sized commercial applications



Part Number	PL260A		
RMS Output Power	260W	THD	Less than 1% @1kHz
Max Output Power	390W	Signal/Noise Ratio	Microphone: >60dB, TEL: >60dB, Line: >70dB
AC Power Consumption	1200W	Controls	Volume for each source, Master Volume, TEL Input Level, MoH Volume, Tone, Zone Selector, Phantom Power on/off
Power Supply	AC 117V, 60Hz, DC 24V, 12A	Telephone	TEL in and MoH Out
Zones	7	Indicators	Power, power level
Speaker Outputs	4/8/16 Ohms (non-zoned), 70/25V (zoned)	Dimensions	16.9" (W) x 3.5" (H) x 11.6" (D)
Other Outputs	Aux (Stereo RCA), Pre-Amp (RCA)	Weight	29.2 lbs.
Inputs	5 x Mic (XLR), 3 x Aux (Stereo RCA), 1 x EQ/Mix (RCA), 1 x TEL (terminal)	Optional Accessories	PBMRK2 rack mounting kit
Frequency Response	50Hz ~ 15kHz (±3dB)	Listings	UL, cUL, CE, FCC, RoHS
Tone Control	Bass ± 10dB, Treble ± 10dB		

# PMM120A • PMM60A • PBM30

Part Number	PMM120A	PMM60A	PBM30
RMS Output Power	120W	60W	30W
Max Output Power	180W	90W	45W
AC Power Consumption	850W	670W	500W
Power Supply	AC 120V, 50/60Hz	AC 120V, 50/60Hz	AC 120V, 50/60Hz
Zones	1	1	1
Speaker Outputs	4/8/16 Ohms, 70/25V	4/8/16 Ohms, 70/25V	4/8/16 Ohms, 70/25V
Other Outputs	Tape (RCA), Booster (RCA), Pre-Amp (RCA)	Tape (RCA), Booster (RCA), Pre-Amp (RCA)	n/a
Inputs	3 x Mic (XLR), 1 x Mic (XLR or terminal), 3 x Mic/Aux (terminal or Stereo RCA), 1 x EQ/Mix (RCA), 1 x TEL (terminal)	3 x Mic (XLR), 1 x Mic (XLR or terminal), 3 x Mic/Aux (terminal or Stereo RCA), 1 x EQ/Mix (RCA), 1 x TEL (terminal)	2 x Mic (terminal), 1 x Aux (Stereo RCA)
Frequency Response	50Hz ~ 15kHz (±3dB)	50Hz ~ 15kHz (±3dB)	50Hz ~ 15kHz (±3dB)
Tone Control	Bass ± 10dB, Treble ± 10dB	Bass ± 10dB, Treble ± 10dB	Bass ± 10dB, Treble ± 10dB
THD	Less than 1% @ 1kHz	Less than 1% @ 1kHz	Less than 1% @ 1kHz
Signal/Noise Ratio	Microphone: >60dB, TEL: >60dB, Line: >70dB	Microphone: >60dB, TEL: >60dB, Line: >70dB	Microphone: >60dB, TEL: >60dB, Line: >70dB
Controls	Volume for each source, Master Volume, Vox Sensitivity, TEL Input Level, MoH Volume, Tone	Volume for each source, Master Volume, Vox Sensitivity, TEL Input Level, MoH Volume, Tone	Volume for each source, Tone, TEL Input Level
Telephone	TEL in and MoH Out	TEL in and MoH Out	TEL in and MoH Out
Indicators	Power, power level	Power, power level	Power
Dimensions	16.9" (W) x 3.5" (H) x 11.8" (D)	16.9" (W) x 3.5" (H) x 11.8" (D)	10.75" (W) x 3.5" (H) x 9.5" (D)
Weight	23.6 lbs.	19 lbs.	11.4 lbs.
Optional Accessories	PBMRK2 rack mounting kit	PBMRK2 rack mounting kit	PBMRK1 rack mounting kit
Listings	UL, cUL, CE, FCC	UL, cUL, CE, FCC	UL, cUL, CE, FCC

Ideal for most commercial applications



## Contractor Series Amplifiers

Speco Technologies' UL listed Contractor Series amplifiers are designed for long-running, every day use. They can stand on their own to run a smaller installation, or be incorporated into a much larger job. With RMS power ranging from 30W to 120W, microphone and source-mixing ability, telephone paging interface and music-on-hold capability, there's practically no job where one of these amplifiers wouldn't be a perfect fit!

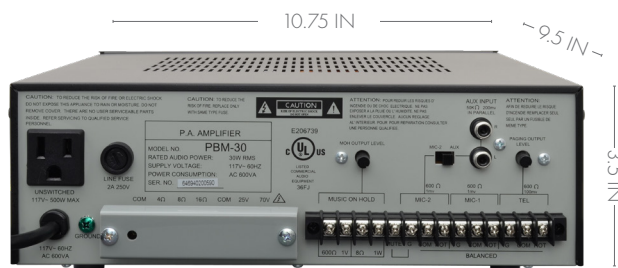
**UL**  
LISTED  
PMM60A  
PMM120A



**UL**  
LISTED



PBM30



**UL**  
LISTED



# PVL Series Amplifiers

The PVL series from Speco Technologies offers features such as priority paging and multiple, easily accessible source inputs, at a very budget-friendly price. These amplifiers are perfect for small installations such as classrooms, retail shops, convenience stores, or for use with the Digital Deterrent® and two-way audio features incorporated into most of Speco Technologies' DVRs/NVRs.

## PVL15A

15W P.A. Mixer Amplifier



Part Number	PVL15A
RMS Output Power	15W
Max Output Power	30W
AC Power Consumption	60W
Power Supply	AC 120V, 50/60Hz
Zones	1
Speaker Outputs	4/8/16 Ohms, 70/25V
Inputs	2 x Mic (1/4" and 1/4" or XLR) 1 x Aux (1/4")
Frequency Response	50Hz ~ 15kHz
Tone Control	Bass ± 10dB, Treble ± 10dB
THD	Less than 0.1% @1kHz
Signal/Noise Ratio	Microphone: >75dB, Line: >80dB
Controls	Volume for each source, Tone, Priority
Telephone	No
Indicators	Power
Dimensions	8.25" (W) x 3" (H) x 7.9" (D)
Weight	8.4 lbs.
Listings	CE, FCC, RoHS

### Features:

- Mic1 priority mute function with front button
- Separate bass and treble controls

### Ideal for:

- Classrooms
- Conference Rooms
- Small Retail
- Small Restaurant





# 20 Watt Talk-Back Mobile Amplifier

The PAT20TB is an invaluable amplifier for mobile and other applications. With this amp, you can talk through the included push-to-talk microphone into an installed speaker (not included), and when finished hit the "Talk Back" button on the front panel and someone on the other end of the system can use the installed speaker as a microphone for the original user to listen through. Schools, law enforcement, armored cars and commercial or private boats of all kinds are just a few of the potential users.

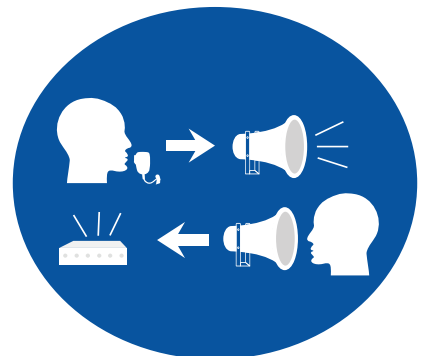
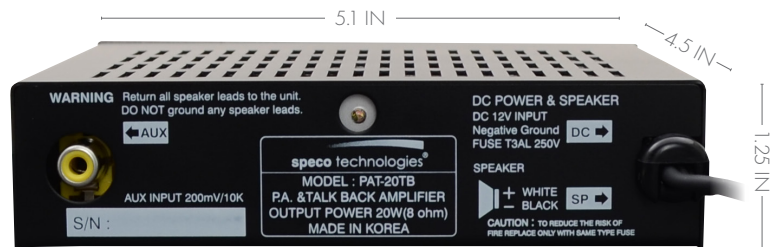
## PAT20TB

### Features:

- Talk-back feature turns a remote speaker (not included) into a listening device for two-way conversations
- Includes push to talk handheld "CB" style microphone (Replacement part# PAT20TBMIC)
- Includes mounting hardware



Part Number	PAT20TB
RMS Output Power	12W
Max Output Power	20W
AC Power Consumption	n/a
Power Supply	DC 11V to 16V
Zones	1
Speaker Outputs	4/8 Ohms
Inputs	1 x Mic (1/4"), 1 x Aux (1/4")
Frequency Response	50Hz ~ 20kHz (±3dB)
Tone Control	Up to +10kHz
THD	Less than 0.5% @1kHz
Signal/Noise Ratio	Microphone: >65dB Line: >70 dB
Controls	Volume for each source, Tone, Talk-back
Indicators	Power
Dimensions	5.1" (W) x 1.25" (H) x 4.5" (D)
Weight	2 lbs.
Includes	Microphone
Optional Accessories	PAT20TBMIC replacement microphone
Listings	CE, FCC, RoHS



# Deluxe Megaphone with Siren

Speco Technologies has long been in the megaphone business and the ER370 has established a reputation in the industry as a fantastic sounding megaphone for a great price. Used by everyone from rock stars, gym coaches, movie directors to law enforcement/emergency workers & political organizers. The ER370 is one of the loudest and most popular megaphones in the industry.

**ER370** (red /off white)

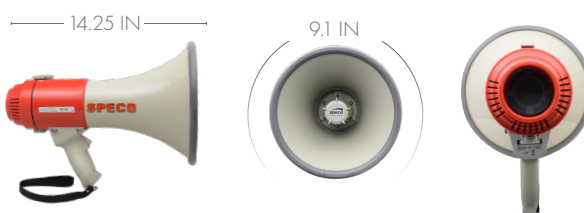
**ER370B** (matte black)

## Features:

- Powerful solid state megaphone
- Built-in selectable electronic alarm siren
- Pistol grip
- Press-to-talk switch
- Volume control
- Durable weather-resistant construction
- Operates on 8 "C" cell batteries (not included)
- Includes shoulder strap



Part Number	ER370/ER370B
Max Output Power	16W
Effective Range	Up to 800 feet
Batteries	8 x "C" type (not included)
Estimated Battery Life	4 hours of normal use
Speaker Impedance	8 Ohms
Controls	Push-to-talk, volume, siren/talk toggle
Dimensions	9.1" (Bell Dia.) x 14.25" (D)
Weight	3.25 lbs. (without batteries)
Includes	Shoulder strap



# Deluxe Megaphone with Siren, USB/SD Player and Recording/Playback

Speco Technologies has long been in the megaphone business and have established a reputation in the industry for fantastic sounding megaphones at a great price. Used by everyone from rock stars, gym coaches, movie directors to law enforcement/emergency workers & political organizers, Speco manufactures some of the loudest and most popular megaphones in the industry.

## ER390UMB

### Features:

- Detachable microphone
- Built-in music player (SD/USB)
- Record and playback function lets you record up to a 10-second message and play back using the trigger
- Lightweight and portable, with clear sound
- Perfect for talk or speech at meetings, assemblies, rallies, movie/TV sets, sporting events/practice, etc
- Pistol Grip with talk switch and siren
- Microphone Volume Control
- ABS Plastic Construction with black rubber coating
- Includes shoulder strap



Part Number	ER390UMB		
Max Output Power	20W	Controls	Push-to-talk, volume, music player, recording and playback
Effective Range	Up to 1000 feet	Dimensions	9.1" (Bell Dia.) x 15.25" (D - with microphone mounted)
Batteries	8 x "C" type (not included)	Weight	2.2 lbs. (without batteries)
Estimated Battery Life	4 hours of normal use	Includes	Shoulder strap, microphone
Speaker Impedance	8 Ohms		



# Amplifier Reference Chart

Features & Specifications	P500A	PL260A	PL200M	PBM60AU/ PBM120AU	PBM60AT/ PBM120AT	PBM60A/ PBM120A	PMM120A	PBM240A	PBM240AT	PBM240AU	PMM60A	P60FACD	PBM30	PAT20TB	PVL15A
RMS Watts	500	260	160	60 / 120	60 / 120	60 / 120	120	240	240	240	60	60	30	20	15
UL Listed		X					X				X	X	X		
Total Possible Mic/Aux Inputs*	1	7	5*	6	6	6	6*	6	6	6	6*	5	3	2	3
Total Possible Mics		5	3	3	3	3	6	3	3	3	6	4	2	1	2
Mic Strip Terminals							2				2		2		
XLR Connectors		5	3	3	3	3	4	3	3	3	4	4			1
1/4" Connectors			3												1
Total Possible Aux	1	3	5*	3	3	3	3	3	3	3	3	1	1	1	1
1/4" Aux Connector			3												1
RCA Connectors (Stereo Pair)		3	2	3	3	3	3	3	3	3	3	1	1	1	
XLR Connectors	1		3												
Telephone Paging (600 Ohm)		X	X	X	X	X	X	X	X	X	X	X	X		
70/25V Outputs	70V	X	X	X	X	X	X	70V	70V	70V	X	X	X		X
4/8/16 Ohms Outputs	8	X	X	X	X	X	X	4 and 8	4 and 8	4 and 8	X	X	X	4 and 8	4 and 8
Music-On-Hold Output		X	X	X	X	X	X	X	X	X	X	X	X		
Aux Output	XLR	RCA	Terminal	XLR/RCA	XLR/RCA	XLR/RCA	RCA	XLR/RCA	XLR/RCA	XLR/RCA	RCA	RCA			
Speaker Zones	1	7	4 Matrix	5	5	5	1	5	5	5	1	4	1	1	1
Priority PAGING		X	X	X	X	X	X	X	X	X	X	X	X		X
Frequency Response (+3Db)	70Hz ~ 18KHz	50Hz ~ 15KHz	50Hz ~ 17KHz	50Hz ~ 20KHz	50Hz ~ 20KHz	50Hz ~ 20KHz	50Hz ~ 15KHz	50Hz ~ 20KHz	50Hz ~ 20KHz	50Hz ~ 20KHz	50Hz ~ 15KHz	60Hz ~ 15KHz	50Hz ~ 15KHz	50Hz ~ 20KHz	50Hz ~ 15KHz
THD @ 1kHz	Less than 0.1%	Less than 1%	Less than 0.5%	Less than 1%	Less than 1%	Less than 1%	Less than 1%	Less than 1%	Less than 1%	Less than 1%	Less than 1%	Less than 1%	Less than 1%	Less than 0.5%	Less than 0.1%
AM/FM Tuner				X	X			X			X	X			
MP3-Capable CD Player				X							X	X			
USB MP3				X							X				
Separate Bass/Treble Controls		X	X	X	X	X	X	X	X	X	X	X	X	X	X
Separate Mic Volume Controls		X	X	X	X	X	X	X	X	X	X	X	X	X	X
Master Volume	X	X	X	X	X	X	X	X	X	X	X	X	X		
Rock Mount	Included	PBMRK2	Built-in	Included	Included	Included	PBMRK2	Included	Included	Included	PBMRK2	PBMRK2	PBMRK1	Surface Mount	No
IR Remote Control				X	X	X		X	X	X					
RS232				X	X	X		X	X	X					

# IP Audio Speakers

Speco's IP Audio allows easy installation with a single network cable (PoE). These speakers offer a scalable system to build on with a sleek look and premium sound quality. Take advantage of two-way audio support on select models to speak to patrons in real time. Easily integrate audio with Speco's state-of-the-art video surveillance systems. All models are compatible with VoIP, SIP Devices (IPPBX, IP Phone) via SIP.

## SPIPC6A 15W IP Ceiling Speaker

## SPIPC6AM 15w IP Ceiling Speaker with Built-In Microphone

## SPIPH8A 15W IP Horn Speaker

## SPIPH8AM 15W IP Horn Speaker with Built-In Microphone

## SPIPH9AM 30W IP Horn Speaker with Built-In Microphone

### Features:

- Works with Speco Audio Manager software
- IP Horn Speakers may be used for Indoor & Outdoor usage
- IP Ceiling Speakers may be used for Indoor usage only
- Supports pre-recorded messages, schedules, and alarm trigger using SecureGuard® software
- PoE or 12/24VDC



All speakers sold individually

Part Number	SPIPC6A   SPIPC6AM	SPIPH8A   SPIPH8AM	SPIPH9AM
Codec	OPUS 48kHz, MP3 44.1kHz, G.722 ADPCM 16kHz, G.711 PCMU 8kHz, G.711 PCMA 8kHz	OPUS 48kHz, MP3 44.1kHz, G.722 ADPCM 16kHz, G.711 PCMU 8kHz, G.711 PCMA 8kHz	OPUS 48kHz, MP3 44.1kHz, G.722 ADPCM 16kHz, G.711 PCMU 8kHz, G.711 PCMA 8kHz
Max Sound Pressure Level	96dB	113dB	120dB
Frequency Response	100Hz~18kHz	300Hz~8kHz	350Hz~8kHz
Harmonic Distortion	0.1% @1kHz	0.1% @1kHz	0.1% @1kHz
Signal to Noise Ratio	91dB	91dB	91dB
Rate Power	15W	15W	30W
Power Supply	PoE or 12-24V	PoE or 12-24V	PoE or 12-24V
Dimensions	7.9" (Dia.) x 3.5" (D)	8.86" (W) x 6.5"(H) x 9.45"(D)	11.2" (W) x 8.07"(H) x 11.5"(D)
Built-in MIC	SPIPC6A: No SPIPC6AM: Yes	SPIPH8A: No SPIPH8AM: Yes	Yes
Operating Temperature	-22 °F - 140 °F	-22 °F - 140 °F	-22 °F - 140 °F
Operating Humidity	5% - 85%	5% - 85%	5% - 85%
Weight	2.87 lbs	2.87 lbs	4.40 lbs
Material	Metal	ABS (IP67 waterproof)	ABS (IP67 waterproof)
Color	White	White	White



# In-Ceiling Speakers

By far our most popular style, in-ceiling speakers are designed to be installed in a drop-ceiling to distribute clear, intelligible and concise background music, tones and pages. We are so confident in the quality and construction of our indoor speakers that each **and every one is backed by a LIFETIME WARRANTY**. The chart below should help you decide which model best suits your needs and budget:

## N | E | X | U | S™ Contractor Series

Nexus is all about convenience and designed to be the center point of your installation. These speakers are made of quality materials and sold in pairs, including the mounting brackets. The real benefit of our Nexus line of speakers is that they are UL listed to meet codes in the areas that require it. [page 22](#)



SP6NXCTUL

## MA SERIES

These speakers live up to their name as they are great for multiple applications in both commercial and residential environments. They are priced to fit into most budgets, but don't sacrifice sound quality to do it. The MA series of speakers is easily our most popular and is the perfect speaker for an installer to keep in the truck just in case you "need a speaker." [page 24](#)



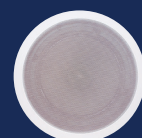
SP6MAT

## 86 SERIES

This is the speaker that brought Speco Technologies to the forefront of the commercial audio business and it's still going strong today. With 11 budget-friendly variations to choose from, the 86 Series has a look and function to fit any installer's need. Starting on [page 26](#)



G86TG



SPG86T



WB86T



# NEXUS™ UL® Contractor Series Speakers

Our Nexus Contractor (NXC) Series commercial line of speakers utilizes premium components to provide a network of sound and paging for even the most demanding commercial environments. The high-end NXC Series features heavy-duty, industrial metal backcans that provide component protection and safety while enhancing the speakers' full-range bass sound. Removable "quick-snap" connection terminals provide easy access and optimal angles for connecting speaker wire. A wattage selector dial simplifies transformer settings. Mounted security loops allow for a support cable run to provide additional installation security. Also, these speakers are sold in kits that include a pair of speakers and ceiling support brackets. Most importantly, the 6.5" models have met or passed the strict UL1480 and UL2043 requirements for fire safety.

All speakers sold in pairs with mounting brackets

## SP6NXCTUL

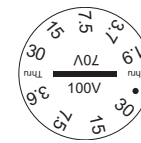


### Features:

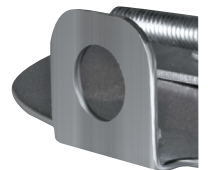
- Easy select transformer dial
- Fire retardant metal backcan
- Safety loop for additional mounting security
- Ported bass
- Quick-snap connection terminals
- Includes mounting brackets



Part Number	SP6NXCTUL
RMS Power	60W
Max Power	120W
Transformer Type	70V
Transformer Power Taps	30W, 15W, 7.5W, 3.7W, 1.9W & 8 Ohms
Termination Type	Phoenix Connector
Sensitivity (1W/1M)	87dB
Maximum SPL (Pmax /1m)	97dB
Driver Impedance	8 Ohms
Magnet	12 oz. Ferrite
Frequency Response Range	60Hz ~ 20kHz
Dispersion @ 1000Hz	110° Conical
Driver	6.5" Polypropylene woofer, 0.75" Silk tweeter
Speaker Dimensions	10.25" (Dia.) x 7.75" (D)
Mounting Dimensions	8.75" (Dia.)
Minimum Mounting Depth	7.5"
Weight	9.8 lbs.
Material	Baffle: Fire-resistant ABS Backcan: Heavy Gauge Plated Steel Grille: Steel
Color	White
UL Rating	UL1480 and UL2043



Terminals



Safety Loop



Fire Retardant Backcan



Quick - Snap Terminal



Mounting Brackets



Ported Bass

# MA Outdoor Series Speakers

Speco Technologies Multi-Application (MA) Series was designed to make the contractor's work as easy and time-efficient as possible. The SP6OCT was designed to be used in damp, humid or wet environments such as bathrooms, backyard overhangs, pools, and more. Our all-in-one unit comes pre-assembled with an ABS backcan and a mounted transformer. It features an easy select transformer wattage dial. The choice of 8 or 9 individual wattage tap settings covers a complete range of installations. The MA Series is the ideal, all-purpose value speaker covering a wide range of commercial sound applications. Plus, the furnished 8 Ohm setting means this speaker can also be kept on hand for residential installation needs.

## SP6OCT

6.5" Weather-Resistant In-Ceiling Speaker with Backcan and Transformer

### Features:

- Manufactured for indoor or outdoor use
- Magnetic grille makes installations quick and easy
- IP66 compliant, weather resistant
- 5 year warranty



**MA**  
S E R I E S  
OUTDOOR

Part Number	SP6OCT		
RMS Power	20W	Frequency Response Range	140Hz - 20kHz
Max Power	40W	Dispersion @ 1000Hz	170°
Transformer Type	70V	Driver	6.5" polypropylene cone, rubber edge woofer, .5" mylar coaxial tweeter
Transformer Settings	20W, 10W, 5W, 8Ohms	Speaker Dimensions	9.76' (D) x 6.3" (H)
Sensitivity (1W/1M)	87dB	Cutout Dimensions	8.2"
Maximum SPL (Pmax /1m)	100dB	Speaker Weight	4.3 lbs
Driver Impedance	8 Ohms	Speaker Body Material	ABS
Magnet	Ferrite, 10.1 oz	Speaker Grille Material	Coated steel

# MA Indoor Series Speakers



Speco Technologies Multi-Application (MA) Series was designed to make the contractor's work as easy and time-efficient as possible. Our all-in-one unit comes pre-assembled with an ABS backcan and a mounted transformer. It features a quick-flip 25 or 70 Volt selector switch and an easy select transformer wattage dial. The choice of 8 or 9 individual wattage tap settings covers a complete range of installations. The MA Series is the ideal, all-purpose value speaker covering a wide range of commercial sound applications. Plus, the furnished 8 Ohm setting means this speaker can also be kept on hand for residential installation needs.

## SP5MAT SP6MAT SP5MATB SP6MATB SP6MAWT



### Features :

- ABS flame retardant backcan
- Easy select transformer dial
- 25V or 70V selector switch
- Safety loop for additional mounting security
- Ported bass
- Optional mounting brackets: 5" Models: BRC6F, 6" Models: BRC8F

All speakers sold individually

Part Number	SP5MAT/SP5MATB	SP6MAT/SP6MATB	SP6MAWT
RMS Power	30W	40W	40W
Max Power	60W	80W	80W
Transformer Type	70/25V (Selectable)	70/25V (Selectable)	70/25V (Selectable)
Transformer Power Taps	30W, 15W, 7.5W, 2.5W, 1W, 0.5W, 0.25W & 8 Ohms	40W, 30W, 15W, 7.5W, 5W, 2.5W, 1W, 0.5W, 0.25W & 8 Ohms	40W, 30W, 15W, 7.5W, 5W, 2.5W, 1W, 0.5W, 0.25W & 8 Ohms
Termination Type	Press terminal	Press terminal	Press terminal
Sensitivity (1W/1M)	87dB	88dB	89dB
Maximum SPL (Pmax /1m)	91.4dB	92.3dB	106dB
Driver Impedance	8 Ohms	8 Ohms	8 Ohms
Magnet	10 oz. Ferrite	11.6 oz. Ferrite	10 oz. Neodymium
Frequency Response Range	57Hz ~ 20kHz	34Hz ~ 20kHz	50Hz ~ 20kHz
Dispersion @ 1000Hz	120° Conical	120° Conical	120° Conical
Drivers	5.25" Polypropylene woofer 1" Mylar tweeter	6.55" Polypropylene woofer 1" Mylar tweeter	6.5" Fiberglass woofer, 1" Titanium tweeter
Speaker Dimensions	9.43" (Dia.) x 6.12" (D)	11.02" (Dia.) x 7.58" (D)	8.63" (W) x 12" (H) x 4.25" (D)
Mounting Dimensions	8.38" (Dia.)	9.88" (Dia.)	7.5" (W) x 10.75" (H)
Minimum Mounting Depth	5.6"	7"	4.13"
Weight	4.5 lbs.	5.5 lbs.	5.5 lbs.
Material	Baffle: Fire-resistant ABS Backcan: Fire-resistant ABS Grille: Metal	Baffle: Fire-resistant ABS Backcan: Fire-resistant ABS Grille: Metal	Baffle: Fire-resistant ABS Backcan: Fire-resistant ABS Grille: Metal
Color	Off-White or Black (B)	Off-White or Black (B)	Off-White
Mounting Bracket	BRC6F (Sold in pairs - not included)	BRC8F (Sold in pairs - not included)	n/a

SP6MAWT



ABS Flame Retardant Backcan



EZ Select Transformer Dial



25V or 70V Selector Switch



Safety Loop



Ported Bass



# 86 Series Contractor Speakers

86  
SERIES



Speco Technologies 86 Series started with the G86TG and has branched into an entire line of high-quality, great-priced speakers. The SPG6MT is the latest model offering easy to install features such as a magnetic grille and optional back can. The 86 series offers a variety of models with various looks and mounting features and offers a style to fit just about any commercial installation.

## SPG6MT

6.5" 70/25V In-Ceiling Speaker  
with Magnetic Grille

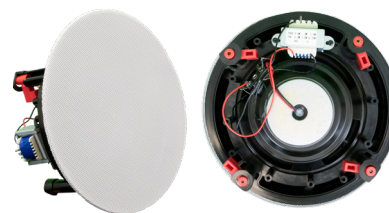
### Features:

- Easy-mount magnetic grille
- 70/25V transformer with easy-install terminal block
- Dog-ear mounting clamps for secure installation
- Optional back can: SPG6MTCAN
- Optional mounting bracket: BRC6F
- Sold individually

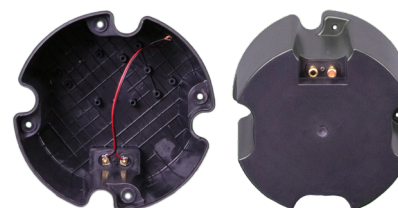


Part Number	SPG6MT
RMS Power	15W
Max Power	25W
Transformer Type	Terminal Block
Transformer Power Taps	70/25V: 5W, 2.5W, 1W
Termination Type	Wire Leads
Sensitivity (1W/1M)	76dB
Maximum SPL (Pmax/1m)	86dB
Driver Impedance	8 Ohms
Terminal Block	Terminal Block
Frequency Response Range	60Hz ~ 20kHz
Dispersion @1000Hz	137°
Driver	6.5" Polypropylene Woofer 0.5" Mylar Tweeter
Speaker Dimensions	9.25" (Dia.) x 3.7" (D)
Mounting Dimensions	8" (Dia.)
Minimum Mounting Depth	3.6"
Weight	2.9 lbs.
Material	Baffle: ABS757 Grille: Steel
Color	Off-White
Mounting Brackets	BRC6F

Side and Back View



SPG6MTCAN: Inside and Bottom View



# 86 Series Contractor Speakers



Speco Technologies 86 Series of 8" 70/25V commercial speakers represents the ultimate combination of value and quality. The G86TG is the speaker that started it all for us and decades later is still our most popular and most imitated design. The line has since grown to 11 models with various looks and mounting features and offers a style to fit just about any commercial installation.

## G86TG G86TCG G46TG



### Features:

- Classic style white steel grille
- 70/25V transformer with colored leads
- G86TCG features volume control knob centered on grille

All speakers sold individually

Part Number	G86TG	G86TCG	G46TG
RMS Power	10W	10W	10W
Max Power	15W	15W	20W
Transformer Type	70/25V	70/25V	70/25V
Transformer Power Taps	5W, 2.5W, 1W, 0.5W, 0.25W & 8 Ohms	5W, 2.5W, 1W, 0.5W, 0.25W & 8 Ohms	5W, 2.5W, 1W, 0.5W, 0.25W
Termination Type	Colored Leads	Colored Leads	Colored Leads
Sensitivity (1W/1M)	90dB	90dB	89dB
Maximum SPL (Pmax/1m)	100dB	100dB	94dB
Driver Impedance	8 Ohms	8 Ohms	8 Ohms
Magnet	5 oz. Ferrite	5 oz. Ferrite	3.6 oz. Ferrite
Frequency Response Range	85Hz ~ 20kHz	85Hz ~ 20kHz	150Hz - 20kHz
Dispersion @ 1000Hz	120° Conical	120° Conical	225° Conical
Driver	8" Paper cone woofer, 0.8" dual cone tweeter	8" Paper cone woofer, 0.8" dual cone tweeter	4" paper cone woofer, dual cone design tweeter
Speaker Dimensions	13" (Dia.) x 3.5" (D)	13" (Dia.) x 3.5" (D)	6.7" (D) x 3.5" (H)
Mounting Dimensions	11.3" (Dia.)	11.3" (Dia.)	4" (Dia.)
Minimum Mounting Depth	2.7"	2.7"	3.25"
Weight	2.7 lbs.	2.7 lbs.	1.5 lbs
Material	Grille: Steel	Grille: Steel	Steel
Color	Off-White	Off-White	Off-White

G86TCG with volume control knob



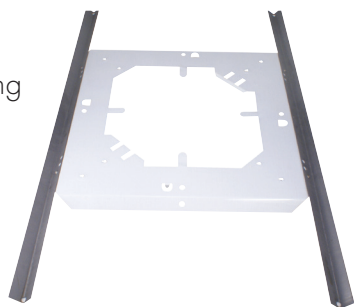
- 3.5 IN -

## TS8

T-Bar Bridge for Ceiling Support

### Features:

- Heavy gauge steel construction
- Dimensions: 23.63" (L) x 14" (W)
- Sold individually



## STH8

Heavy Gauge Steel Backcan

### Features:

- Perforated mounting strap for 8" speakers
- Heavy-gauge steel construction with undercoating that eliminates any mechanical or acoustical resonance caused by vibration
- Rust preventative finish
- Can be used as a backbox in ceilings or walls
- UL2043
- Dimensions: 12.25" (W bottom) x 8" (W top) x 4" (H)
- Sold individually



# 86 Series Contractor Speakers



Speco Technologies 86 Series of 70/25V commercial speakers represents the ultimate combination of value and quality. The SPG86T modern grille speaker represents an evolution of our most popular speaker with a look that represents modern tastes. The 86 Series includes 11 models with various looks and mounting features and offers a style to fit just about any commercial installation.



## SPG66T SPG66TC SPG86T SPG86TC

### Features:

- Modern style mesh steel grille
- 70/25V transformer with colored leads
- Dog-ear mounting clamps for secure installation
- SPG86TC and SPG66TC feature volume control knob centered on grill
- Optional mounting brackets:  
6" Models: BRC6, 8" Models: BRC8

SPG86TC  
with volume  
control knob



All speakers sold individually

Part Number	SPG66T	SPG66TC	SPG86T	SPG86TC
RMS Power	10W	10W	10W	10W
Max Power	15W	15W	15W	15W
Transformer Type	70/25V	70/25V	70/25V	70/25V
Transformer Power Taps	5W, 2.5W, 1W, 0.5W, 0.25W & 8 Ohms	5W, 2.5W, 1W, 0.5W, 0.25W & 8 Ohms	5W, 2.5W, 1W, 0.5W, 0.25W & 8 Ohms	5W, 2.5W, 1W, 0.5W, 0.25W & 8 Ohms
Termination Type	Colored leads	Colored leads	Colored leads	Colored leads
Sensitivity (1W/1M)	91dB	91dB	91dB	91dB
Maximum SPL (Pmax/1m)	101dB	101dB	100dB	100dB
Driver Impedance	8 Ohms	8 Ohms	8 Ohms	8 Ohms
Magnet	5 oz. Ferrite	5 oz. Ferrite	5 oz. Ferrite	5 oz. Ferrite
Frequency Response Range	120Hz ~ 20kHz	120Hz ~ 20kHz	90Hz ~ 20kHz	90Hz ~ 20kHz
Dispersion @ 1000Hz	120° Conical	120° Conical	120° Conical	120° Conical
Driver	6" Paper cone woofer 0.8" Dual cone tweeter	6" Paper cone woofer 0.8" Dual cone tweeter	8" Paper cone woofer 0.8" Dual cone tweeter	8" Paper cone woofer 0.8" Dual cone tweeter
Speaker Dimensions	9" (Dia.) x 3" (D)	9" (Dia.) x 3" (D)	10.75" (Dia.) x 3.5" (D)	10.75" (Dia.) x 3.5" (D)
Mounting Dimensions	7.625" (Dia.)	7.625" (Dia.)	9.5" (Dia.)	9.5" (Dia.)
Minimum Mounting Depth	2.4"	2.4"	2.8"	2.8"
Weight	1.9 lbs.	2 lbs.	2.2 lbs.	2.3 lbs.
Material	Baffle: High impact polystyrene Grille: Steel	Baffle: High impact polystyrene Grille: Steel	Baffle: High impact polystyrene Grille: Steel	Baffle: High impact polystyrene Grille: Steel
Color	Off-White	Off-White	Off-White	Off-White
Mounting Brackets	BRC6 (sold in pairs - not included)	BRC6 (sold in pairs - not included)	BRC8 (sold in pairs - not included)	BRC8 (sold in pairs - not included)



# 86 Series Contractor Speakers

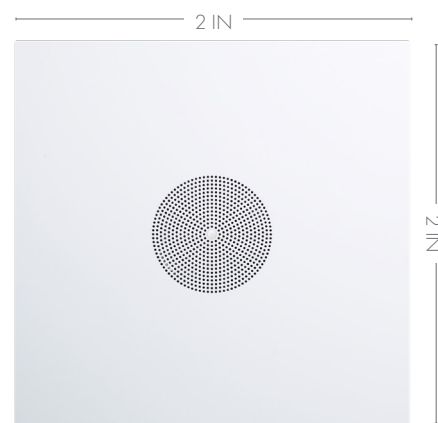


Speco Technologies 86 Series of 70/25V commercial speakers represents the ultimate combination of value and quality. The 1X1/1X2/2X2 versions of this popular line offer an alternative look to the traditional round speaker. Of extra convenience is the 2' width of the 2X2 and 1X2 models. These fit right into an existing ceiling tile grid and eliminates the costly and time consuming chore of cutting precise holes in ceiling tiles. It also eliminates the need for additional mounting brackets, which adds tremendous cost savings over large numbers of speakers. The 86 Series includes 11 models with various looks and mounting features and offers a style to fit just about any commercial installation.

## G86TG1X2 G86TG2X2 G86TG2X2C

### Features:

- Square style white steel grille
- 70/25V transformer with colored leads
- "C" models features volume control knob centered on grill
- Optional Plenum-rated (UL2043) backcan: STH8 (1X1 and 2X2 models only)



Part Number	G86TG1X2	G86TG2X2 / G86TG2X2C
RMS Power	10W	10W
Max Power	15W	15W
Transformer Type	70/25V	70/25V
Transformer Power Taps	5W, 2.5W, 1W, 0.5W, 0.25W & 8 Ohms	5W, 2.5W, 1W, 0.5W, 0.25W & 8 Ohms
Termination Type	Colored leads	Colored leads
Sensitivity (1W/1M)	90dB	90dB
Maximum SPL	100dB	100dB
Driver Impedance	8 Ohms	8 Ohms
Magnet	5 oz. Ferrite	5 oz. Ferrite
Frequency Response Range	85Hz ~ 20kHz	85Hz ~ 20kHz
Dispersion @ 1000Hz	120° Conical	120° Conical
Driver	8" Paper cone woofer, 0.8" Dual cone tweeter	8" Paper cone woofer, 0.8" Dual cone tweeter
Speaker Dimensions	1' (W) x 2' (H) x 3.5" (D)	2' (W) x 2' (H) x 3.5" (D)
Mounting Dimensions	n/a	n/a
Minimum Mounting Depth	2.7"	2.7"
Weight	G86TG1X2: 5.7 lbs.	G86TG2X2: 10.5 lbs. G86TG2X2C: 10.6 lbs.
Material	Grille: Steel	Grille: Steel
Color	Off-White	Off-White
Mounting Bracket	n/a	n/a
Back Can	n/a	STH8 (not Included)



70/25V transformer with colored leads

# 86 Series Contractor Speakers



Speco Technologies 86 Series of 70/25V commercial speakers represents the ultimate combination of value and quality. The WB86T wall baffle speaker is a classic and extremely popular design that was recently updated with some very modern features. The 86 Series includes 11 models with various looks and mounting features and offers a style to fit just about any commercial installation.

## WBM6T

6.5" Vandal-Resistant Wall Speaker

**Features:**

- Speaker is completely enclosed in a sturdy metal enclosure
- Design greatly reduces chance of damage to or tampering with speaker

## WBM6TA

6.5" Amplified Wall Speaker

**Features:**

- Built-in 10W Amplifier
- Requires 12VDC power (not included)



Part Number	WBM6T	WBM6TA
RMS Power	20W	
Max Power	40W	
Transformer Type	70/25V	N/A
Transformer Settings	6W, 3W, 1.5W	N/A
Sensitivity (1W/1M)	87dB	
Maximum SPL	103dB	
Driver Impedance	8 Ohms	
Magnet	10 oz. Ferrite	
Frequency Response Range	110Hz - 20kHz	
Dispersion @ 1000Hz	180°	
Driver	6.5" polypropylene cone, rubber edge woofer, .5 PEI dome tweeter	
Speaker Dimensions	7.7" (L) x 7.7" (W) x 3.2" (H)	
Built-in Amplifier	N/A	10W
External Power	N/A	12VDC (not included)
Weight	6 lbs	
Material	Metal	

# 86 Series Contractor Speakers



Speco Technologies 86 Series of 70/25V commercial speakers represents the ultimate combination of value and quality. The WB86T wall baffle speaker is a classic and extremely popular design that was recently updated with some very modern features. The 86 Series includes 11 models with various looks and mounting features and offers a style to fit just about any commercial installation.



## WB86T

8" 70/25V Wall Baffle Speaker

### Features:

- Solid wood construction
- Fully enclosed for internal component protection
- Black cloth grille
- 70/25V selectable transformer
- Press terminals for wiring



Transformer Dial



Part Number	WB86T		
RMS Power	10W	Magnet	5 oz. Ferrite
Max Power	15W	Frequency Response Range	85Hz ~ 20kHz
Transformer Type	70/25V (Selectable)	Dispersion @ 1000Hz	120° Conical
Transformer Power Taps	10W, 5W, 2.5W, 1.25W, 0.625W & 8 Ohms	Driver	8" Paper cone woofer, 0.8" Dual cone tweeter
Termination Type	Press terminal	Speaker Dimensions	10" (W) x 10" (H) x 5.43" top/3.19" bottom (D)
Sensitivity (1W/1M)	93dB	Weight	6.9 lbs.
Maximum SPL (Pmax/1m)	105dB	Material	Baffle: Wood Grille: Cloth
Driver Impedance	8 Ohms	Color	Brown body, black grille

# Specialty Commercial Speakers



Speco Technologies offers a line of specialty speakers designed for very specific and important applications. The SPCT8T is a covert speaker designed in the guise of an AC vent. In addition to the aesthetic appeal of the design, there are also two additional important benefits. First, this speaker is 2' by 2' and fits directly into a ceiling tile grid. This saves time cutting holes and also saves the need to purchase a tile mounting bracket. Also, the vent grill design helps disperse the audio in a wider pattern than a typical speaker.

## SPCT8T

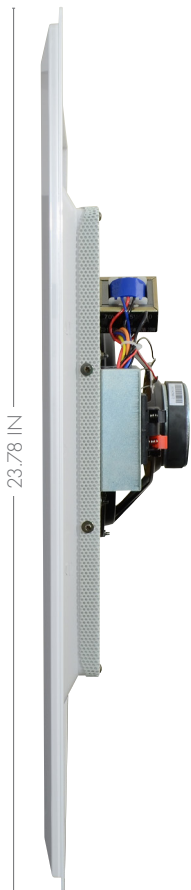
8" 70/25V Ceiling Tile Speaker

### Features:

- Easy select transformer dial
- 25V or 70V selector switch
- Fits directly into a 2'x2' ceiling tile grid
- Smooth vent facade design
- Includes 2' rail for mounting in a 2' x 4' ceiling grid



— 4.94 IN —



Easy select transformer dial



Part Number	SPCT8T
RMS Power	30W
Max Power	60W
Transformer Type	70/25V (Selectable)
Transformer Power Taps	20W, 10W, 5W, 2.5W, 1.25W, & 8 Ohms
Termination Type	Press terminal
Sensitivity (1W/1M)	89dB
Maximum SPL (Pmax/1m)	97.1 dB
Driver Impedance	8 Ohms
Magnet	10 oz. Ferrite
Frequency Response Range	50Hz ~ 20kHz
Dispersion @ 1000Hz	160° Conical
Driver	8" Polypropylene woofer, 0.75" Mylar tweeter
Speaker Dimensions	23.78" (W) x 23.78" (H) x 4.94" (D)
Mounting Dimensions	n/a
Minimum Mounting Depth	6.5" (Dia.)
Weight	7.26 lbs.
Material	Baffle: High impact polystyrene
Color	White



# Specialty Commercial Speakers

The SP30PT is a hanging pendant speaker which facilitates mounting in open ceilings. One big advantage of a pendant speaker is the ability to mount a speaker much closer to the ground than a high ceiling would allow, thus reducing the amount of power needed in the speaker and allowing a smaller and less expensive amplifier to be used. Our pendant speakers skillfully combine style, convenience and value into one package.

## SP30PT

5" 70/25V Pendant Mount Speaker - White

## SP30PTB

5" 70/25V Pendant Mount Speaker - Black

### Features:

- Attractive, 3-hook, enclosed ABS design
- 70/25V selectable transformer
- Press terminals for wiring
- Built-in safety loop for additional mounting security
- Includes 11.25" hanging apparatus

All speakers sold individually



Part Number	SP30PT/SP30PTB
RMS Power	30W
Max Power	60W
Transformer Type	70/25V (Selectable)
Transformer Power Taps	30W, 15W, 7.5W, 5W, 2.5W, 1W, 0.5W, 0.25W & 8 Ohms
Termination Type	Press terminal
Sensitivity (1W/1M)	92dB
Maximum SPL (Pmax/1m)	93.4 dB
Driver Impedance	8 Ohms
Magnet	11 oz. Ferrite
Frequency Response Range	90Hz ~ 20kHz
Dispersion @ 1000Hz	100° Conical
Driver	5" Polypropylene woofer, 0.5" Mylar tweeter
Speaker Dimensions	3.98" (Dia.) Top / 8.6" (Dia) Bottom / 5.32" (H)
Mounting Dimensions	n/a
Minimum Mounting Depth	n/a
Weight	5 lbs.
Material	Body: ABS Grille: Metal
Color	SP30PT: Off-White SP30PTB: Black



# Specialty Commercial Speakers

These versatile speakers are capable of being mounted as pendant, as wall mount, or as ground mount/landscape speakers (optional mounting kits required for wall/ground). Its premium construction and built-in selectable 70/25V transformer with settings of 32W, 16W, 8W, 4W and 8 Ohms (SP6PTB and SP6PTW only) is perfect for commercial and residential installations. These speakers include Pendant Mount accessories and offer an optional mounting kit for wall mounting or landscape mounting speaker (Black speakers use SP6PMNTB which includes black ground mount and black wall mount accessories, while white speakers use SP6PMNT which includes black ground mount and white wall mount accessories)

## SP6PTB

With transformer - Black

## SP6PTW

With transformer - White

### Features:

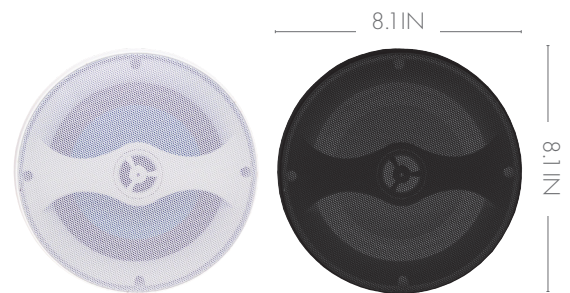
- Versatile speakers capable of being mounted as pendant, as wall mount, or as ground mount/landscape speakers (optional mounting kits required for wall/ground)
- Premium construction for commercial and residential installations

**WEATHER RESISTANT**



## CONTRACTOR ELITE

Part Number	SP6PTB / SP6PTW
RMS Power	32W
Max. Power	64W
Transformer Type	70/25V
Transformer Power Taps	32, 16, 8, 4W and 8 Ohms
Termination Type	Phoenix Connector
Sensitivity (1W/1M)	88dB
Maximum SPL	92dB
Magnet Size & Material	15.5 oz. ferrite
Frequency Response Range	98Hz ~ 20kHz
Disperson @ 1000Hz	100°
Driver	6.5" Polypropylene woofer, 1" Polyurethane tweeter
Driver Impedance	8 Ohms
Unit Dimensions	8.1" (Dia.) x 12.6" (H)
Unit Weight	7 lbs.
Unit Material	Polypropylene Composite
Unit Color	White or Black (B)
Optional Mounting Kit	SP6PMNTB (black) / SP6PMNT (white)



### SP6PMNT

Black ground mount & white wall mount

### SP6PMNTB

Black ground mount & black wall mount

# Specialty Commercial Speakers

The SPP20T is not quite a horn and not quite a speaker, but rather something that gives you the best of both worlds. You get the sound quality of an actual 5" cone speaker coupled with the projection ability of a horn. These units are ideal for installations where you want better sound quality for background music or voice than you might get from a typical horn, but need to project the sound a little further or in a louder environment than a typical cone speaker could handle.

## SPP20T

5" 70V Projection Speaker

### Features:

- Mounts like a horn with adjustable bracket
- Constructed for indoor or outdoor use
- Built-in 70V transformer

**WEATHER RESISTANT**



All speakers sold individually

Part Number	SPP20T
RMS Power	20W
Max Power	30W
Transformer Type	70V
Transformer Power Tap	20W, 10W, 5W
Termination Type	Terminal
Sensitivity (1W/1M)	90dB
Maximum SPL (Pmax/1M)	130dB
Driver Impedance	8 Ohms
Magnet size and material	11.4 Oz Ferrite
Frequency Response Range	160Hz ~ 125KHz
Dispersion @ 1000Hz	100°
Driver	5" Polypropylene coated paper
Speaker Dimensions	6.8" Diameter x 8.7" length
Weight	3.6 lbs.
Material	ABS, Grille: Aluminum



# Specialty Commercial Speakers

With a realistic rock design, these fully weather-resistant speakers combine strong specifications and installer friendly features to bring sound seamlessly into a commercial or residential outdoor environment without sacrificing any aesthetic beauty. Constructed of a high-end polymer and coupled with a fine mesh integrated grille, these rock speakers will provide years of performance and sound enjoyment to your outdoor listening environment.

## SPRK65CBT

6.5" 70/25V Outdoor Rock Speakers - Sandstone Brown

## SPRK65CGT

6.5" 70/25V Outdoor Rock Speakers - Granite Grey

### Features:

- Weather-resistant design
- Rock appearance blends seamlessly into outdoor environments
- 70/25V selectable transformer



All speakers sold individually

Part Number	SPRK65CBT	SPRK65CGT
RMS Power	30W	30W
Max Power	60W	60W
Transformer Type	70/25V	70/25V
Transformer Power Taps	30W,15W,7.5W,3.75W & 8 Ohms	30W,15W,7.5W,3.75W & 8 Ohms
Termination Type	Wire leads	Wire leads
Sensitivity (1W/1M)	87dB	87dB
Maximum SPL (Pmax/1m)	92dB	92dB
Driver Impedance	8 Ohms	8 Ohms
Magnet	10 oz. Ferrite	10 oz. Ferrite
Frequency Response Range	75Hz ~ 20kHz	75Hz ~ 20kHz
Dispersion @ 1000Hz	120° Conical	120° Conical
Driver	6.5" Polypropylene woofer, 0.5" Mylar tweeter	6.5" Polypropylene woofer, 1" Mylar tweeter
Speaker Dimensions	12.6" (W) x 13.39" (H) x 11.8" (D)	12.6" (W) x 13.39" (H) x 11.8" (D)
Weight	13 lbs.	13 lbs.
Material	Fiberglass reinforced plastic	Fiberglass reinforced plastic
Color	Sandstone Brown	Granite Grey

# Indoor/Outdoor Commercial Speakers

Our All-Weather Elite (AWE) speakers offer great sound in a unique, yet ultra-stylish design. The sound quality and appearance of these speakers make them invaluable for use in both indoor applications (such as bars, restaurants, schools, retail, etc.), and outdoor applications (such as homes, restaurants, schools, etc.). The compact size helps them not only blend into the background better, but also fit perfectly in tight spaces.

## SP4AWET

4" Indoor/Outdoor Wall-Mount Speaker with Transformer – Black

## SP4AWETW

4" Indoor/Outdoor Wall-Mount Speaker with Transformer – White

### Features:

- Rounded, stylish design
- Horizontal-swivel mounting bracket
- 70/25V selectable transformer
- Weather-resistant design



Transformer Dial & Terminals



All speakers sold individually



Part Number	SP4AWET	SP4AWETW
RMS Power	25W	25W
Max Power	40W	40W
Transformer Type	70/25V (Selectable)	70/25V (Selectable)
Transformer Power Taps	20W, 15W, 10W, & 5W	20W, 15W, 10W, & 5W
Termination Type	Press terminal	Press terminal
Sensitivity (1W/1M)	84dB	84dB
Maximum SPL (Pmax/1m)	104dB	104dB
Driver Impedance	8 Ohms	8 Ohms
Magnet	9 oz. Ferrite	9 oz. Ferrite
Frequency Response Range	75Hz ~ 20kHz	75Hz ~ 20kHz
Dispersion @ 1000Hz	180° Conical	180° Conical
Driver	4" mica/polypropylene woofer, 0.75" silk tweeter	4" mica/polypropylene woofer, 0.75" silk tweeter
Speaker Dimensions	6" (W) x 9.5" (H) x 6.5" (D)	6" (W) x 9.5" (H) x 6.5" (D)
Weight	5.5 lbs.	5.5 lbs.
Material	Body: High impact polystyrene Grille: Treated metal Bracket: Treated metal	Body: High impact polystyrene Grille: Treated metal Bracket: Treated metal
Color	Black	White



— 6 IN —



— 9.5 IN —

— 6.5 IN —

# Contractor Elite Series Indoor/Outdoor Wall-Mount Speakers

Contractor Elite is far from your common speaker line. Though designed with commercial applications in mind, these speakers are built with high-performance materials and features you'd find in high-end residential installations. The Contractor Elite Outdoor speaker line provides amazing sound, stylish looks, and easy installations – all for an amazing price.

## SPCE5OTW

5.25", white housing, 70V, pair

## SPCE6OTW

6.5", white housing, 70V, pair

## SPCE6OTB

6.5", black housing, 70V, pair

## SPCE8OTW

8", white housing, 70V, each

## SPCE8OTB

8", black housing, 70V, each



### Features:

- Great sound at an affordable price
- IP66 compliant, weather resistant
- Aluminum grille for extended use in outdoor environments
- "T" models come with a selectable 70V transformer
- 5 year warranty against manufacturing defects

Part Number	SPCE5OTW	SPCE6OTW/SPCE6OTB	SPCE8OTW/SPCE8OTB
RMS Output Power	40W	60W	100W
Max Output Power	80W	120W	140W
Sensitivity (1W/1M)	84dB	88dB	87dB
Maximum SPL (Pmax/1M)	100dB	102dB	108dB
Driver Impedance	8 Ohms	8 Ohms	8 Ohms
Frequency Response Range	90Hz - 20kHz	85Hz - 20kHz	65Hz - 20kHz
Driver	5.25" polypropylene woofer, 0.75" silk dome tweeter	6.5" polypropylene woofer, 1" silk dome tweeter	8" polypropylene woofer, 1" silk dome tweeter
Transformer Settings (for "T" Models only)	70V (40W, 20W, 10W, 5W, 2.5W, 8 Ohms)	70V (50W, 25W, 12.5W, 6W, 3W, 8 Ohms)	70V (100W, 50W, 25W, 12.5W, 8 Ohms)
Dimensions	7" (L) x 5.5" (D) x 11.3" (H)	7.9" (L) x 6.6" (D) x 12.6" (H)	9.8" (L) x 7" (D) x 15.6" (H)
Speaker Grille Material	Aluminum	Aluminum	Aluminum
Color	White (W) / Black (B)	White (W) / Black (B)	White (W) / Black (B)



Side



Front



# Indoor/Outdoor Commercial Speakers

The DMS Series from Speco Technologies represents feature packed 3-way sound in a value priced wall-mount unit. This series is our longest selling line of indoor/outdoor wall-mount speakers, and for good reason. With die-cast construction and great quality at an affordable price, the DMS series of speakers are ideal for any wall-mount application.

## DMS3TS

4" 3-Way Indoor/Outdoor Wall-Mount Speaker with Transformer – Black

## DMS3TSW

4" 3-Way Indoor/Outdoor Wall-Mount Speaker with Transformer – White

### Features:

- Compact, full-range design
- Each speaker contains:  
4" Polypropylene woofer,  
2" Polypropylene midrange and  
1" Polypropylene dome tweeter
- Die-cast enclosure, complete with mounting bracket, speaker wire and mounting hardware
- Weather-resistant design



Transformer Dial & Terminals



All speakers sold individually

Part Number	DMS3TS	DMS3TSW
RMS Power	15W	15W
Max Power	25W	25W
Transformer Type	70/25V (Selectable)	70/25V (Selectable)
Transformer Power Taps	15W, 7.5W, 4W, 2W, 1W, & 8 Ohms	15W, 7.5W, 4W, 2W, 1W, & 8 Ohms
Termination Type	Screw terminal	Screw terminal
Sensitivity (1W/1M)	86dB	86dB
Maximum SPL (Pmax/1m)	97db	97db
Driver Impedance	8 Ohms	8 Ohms
Magnet	10 oz. Ferrite	10 oz. Ferrite
Frequency Response Range	110Hz ~ 20kHz	110Hz ~ 20kHz
Dispersion @ 1000Hz	180° Conical	180° Conical
Driver	4" Polypropylene woofer, 2" Mylar mid-range, 1" Mylar tweeter	4" Polypropylene woofer, 2" Mylar mid-range, 1" Mylar tweeter
Speaker Dimensions	4.5" (W) x 7.25" (H) x 4.375" (D)	4.5" (W) x 7.25" (H) x 4.375" (D)
Weight	4.2 lbs.	4.2 lbs.
Material	Body: Aluminum Grille: Treated metal	Body: Aluminum Grille: Treated metal
Color	Black	White



— 4.375 IN —



— 4.5 IN —



— 7.25 IN —

# Professional Mini Communication Speakers

These professional communication speakers from Speco Technologies are great for mobile communication needs, or for providing audio anywhere a 3.5mm plug is provided. Designed for indoor use, the AES4 is amplified while the CBS4 is passive.

## AES4

4" Amplified Professional Communication Extension Speaker

## CBS4

4" Professional Communication Extension Speaker

### Features:

- Swivel bracket for all angle mounting
- ABS plastic enclosure
- Soft, padded grille
- Complete with 10' cord and 3.5mm standard plug
- Controlled speech frequency response to limit background noise
- AES4 requires 12VDC power supply (not included)



AES4



AES4 Rear View



CBS4 Rear View



CBS4



Part Number	AES4	CBS4
RMS Power	5W	5W
Max Power	10W	10W
Termination Type	Wire Strip	3.5mm Mini-Plug
Sensitivity (1W/1M)	82dB	82dB
Maximum SPL (Pmax/1m)	96dB	96dB
Driver Impedance	4 - 8 Ohms	4 - 8 Ohms
Magnet	4.5 oz. Ferrite	4.5 oz. Ferrite
Frequency Response Range	150Hz ~ 5kHz	150Hz ~ 5kHz
Dispersion @ 1000Hz	90° Conical	90° Conical
Driver	4" Treated paper woofer	4" Treated paper woofer
Speaker Dimensions	5.5" (W) x 4.5" (H) x 2.5" (D)	5.5" (W) x 4.5" (H) x 2.5" (D)
Weight	1.5 lbs.	1.3 lbs.
Material	Body: ABS	Body: ABS
Color	Grille: Patent leather	Grille: Patent leather



# Professional Mini Communication Speakers

The CBS240 is an all-weather professional communication extension speaker.

The weather-resistant design makes it great for marine or other mobile applications where there is a threat of moisture.

## CBS240

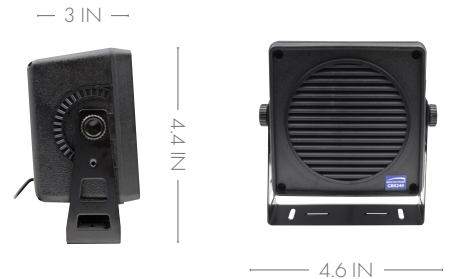
4" Weather-Resistant Professional Communication Extension Speaker

### Features:

- Swivel bracket for all angle mounting
- ABS plastic enclosure
- Complete with 10' cord and 3.5mm standard plug

Part Number	CBS240
RMS Power	4W
Max Power	7W
Termination Type	3.5mm Mini-Plug
Sensitivity (1W/1M)	88dB
Maximum SPL (Pmax/1m)	106dB
Driver Impedance	8 Ohms
Magnet	3 oz. Ferrite
Frequency Response Range	180Hz ~ 6.6kHz
Dispersion @ 1000Hz	90° Conical
Driver	4" Polypropylene
Speaker Dimensions	4.6" (W) x 4.4" (H) x 3" (D)
Weight	1.2 lbs.
Material	Body: ABS Bracket: Metal
Color	Black

CBS240 Rear View



Mini Speakers							
Part Number	Dimensions	Impedance	Res. Freq. (Hz)	Freq. Range	Sensitivity	Power Nom Watts	Alnico Mag. Wht. oz.
U260SX	2" square	8 Ohms	375 - 485	FO - 4,500	92dB	0.2	0.33
U265SX	2" square	8 Ohms	275 - 390	FO - 4,500	92dB	0.3	0.4



Available in bulk only - 50 pieces per pack standard



# Professional UHF 700 Frequency-Selectable Microphone Line



Our professional, UHF 700 frequency-selectable single channel receiver and handheld and lapel microphone transmitters allow the user to select and match desired frequencies on each unit. This eliminates the need to maintain high inventory levels of similar units with locked frequencies; providing clear, interference-free channels of communication for roaming distances in excess of 150 feet.

## Features:

- Up to 700 selectable pre-programmed frequencies make it easy to set up multiple system configurations and avoid interference
- Auto-scan function can locate interference-free channels easily
- Diversity technology ensures quality reception
- Integrated charging function potentially saves money and the environment
- Constructed from durable plastic with a 1/2 rack design
- Squelch adjustment
- Balanced XLR connector and unbalanced 1/4" jack audio output
- FCC, CE, RoHS compliant



## MUHF101

Single Channel True Diversity PLL Receiver

Part Number	MUHF101
Receiving Sensitivity	at 10uV over 80dB S/N ratio
Selectivity	More than 50dB
AF Response	80Hz - 16kHz (±3dB)
T.H.D.	More than 1% (at 1kHz)
IF Frequency	1st 243.95MHz 2nd 10.7MHz
Dynamic Range	More than 96dB
Tone Signal	32.768kHz

Part Number	MUF101 (Cont.)
Receiving Sensitivity	at 10uV over 80dB S/N ratio
Selectivity	More than 50dB
AF Response	80Hz - 16kHz (±3dB)
T.H.D.	More than 1% (at 1kHz)
IF Frequency	1st 243.95MHz 2nd 10.7MHz
Dynamic Range	More than 96dB
Tone Signal	32.768kHz

## MUHFHH

Single Channel Handheld Mic



Part Number	MUHFHH/MUHFLP
Carrier Frequency Range	UHF band 540 - 570 MHz
RF Power Output	10mW (max.)
Oscillator	PLL synthesized
Frequency Stability	±0.005%
Maximum Deviation	±48kHz
Spurious Emission	More than 60dB below carrier frequency
T.H.D.	More than 1% (at 1kHz)
Microphone Cartridge	(Handheld) uni-directional dynamic unit. (Lavalier) uni-directional electret condenser unit
Operating Voltage	DC 1.5V x 2 AA size dry or rechargeable batteries (not included)
Current Consumption	120mA (max.)

## MUHFLP

Single Channel Lapel Mic



# Wired Microphones

Complete your installation with high-quality microphones from Speco Technologies.

## DM520P

Dynamic Push-To-Talk Handheld Microphone

- For CB and professional communications
- Includes 6' cable



## MCHH100A

Dynamic Handheld Microphone



XLR Connection



Includes carrying case, mic stand adapter and 15' XLR cable



## MGS1C

Dynamic Adjustable Gooseneck Microphone  
Chrome



## MGS1

Dynamic Adjustable Gooseneck Microphone



3-wire connection

Part Number	DM520P	MCHH100A	MGS1	MGS1C
Frequency Response	100Hz ~ 10kHz	50Hz ~ 13kHz	300Hz ~ 10kHz	
Impedance	500 Ohms	500 Ohms	500 Ohms	
Sensitivity	-78dB ± 3dB	-54dB ± 3dB	-74dB ± 3dB	
Capsule type	Dynamic	Dynamic	Dynamic	
Pattern	Omni-Directional	Uni-Directional	Omni-Directional	
Dimensions	4" (L) x 2.4" (W) x 2" (D)	7" (L) x 2" (Dia. at top)	12" gooseneck	
Connector	1/4" unbalanced (TS) phono plug	XLR	3-wire	

# Wired Microphones / Accessories

Complete your installation with high-quality microphones from Speco Technologies.



## MCDT300A

Condenser Adjustable Gooseneck Tabletop Paging/Conference Microphone

- On/off paging button
- Includes 15' Mini XLR to XLR cable with 1/4" adapter and volume control knob
- Requires two "AA" batteries (not included)



Includes 15 FT XLR cable

## MHL5S

Dynamic Adjustable Gooseneck Tabletop Paging Microphone

- Momentary switch for priority paging and lock down for continuous use
- Dual impedance



Part Number	MCDT300A	MHL5S
Frequency Response	50Hz ~ 16kHz	80Hz ~ 12kHz
Impedance	200 Ohms	Selectable Impedance: High: 50kHz Low: 600 Ohms
Sensitivity	-42dB ± 3dB	Sensitivity: High: -53dB ± 3dB Low: -71 dB ± 13dB
Capsule type	Condenser	Dynamic
Pattern	Uni-Directional	Uni-Directional
Dimensions	Gooseneck: 18" Base: 7" (L) x 4.5" (W) x 2.5"(H)	Gooseneck: 12" Base: 6.3" (L) x 4.75" (W) x 3.77"(H) Cord: Expandable to 5'
Connector	Mini-XLR on base	XLR

## MSA1

Universal Mic Stand Adapter

### Features:

- Fits most handheld microphones
- Clamp-on style is ideal for wider microphones



## MCA10

10' High Performance XLR Mic Cable

## MCA20

20' High Performance XLR Mic Cable

### Features:

- Low Impedance
- Male to Female XLR Connectors





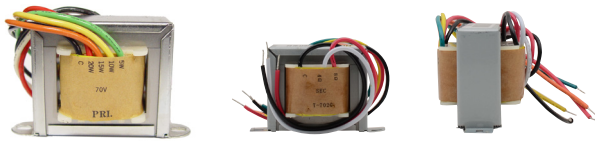
# Transformers

These accessories from Speco Technologies enable any 8 Ohms speaker to be utilized in a 70V paging system by simply placing the transformer in line between the speaker and amplifier.

All transformers sold individually

Part Number	T7020	T70255	T2510	T7010
Multiple wattage taps	20W, 15W, 10W, 5W	5W, 2.5W, 1W, 0.5W, 0.25W	10W, 5W, 2.5W, 1.25W, 0.625W	10W, 5W, 2.5W, 1.25W, 0.625W
Audio system	70V	70V or 25V	25V	70V

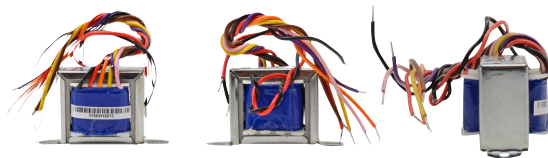
## T7020 20W 70V Speaker Line Transformer



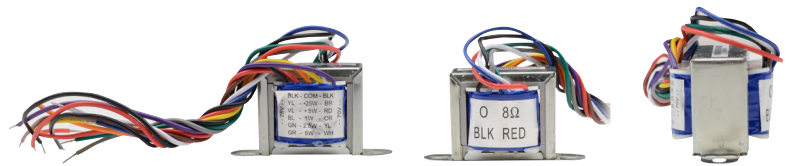
## T7010 10W 70V Speaker Line Transformer



## T2510 10W 25V Speaker Line Transformer



## T70255 5W 70V/25V Speaker Line Transformer



## PSR4C

12VDC Power Supply

12VDC 4 Amp Reg. Filtered Power Supply With 5 Amp Surge & Cigarette Lighter Adapter Built-In Front Panel

- Input: 117VAC / 60Hz
- Output: 12VDC 4 Amp constant, 5 Amp surge
- Dimensions: 4.25" (W) x 2.6" (H) x 7.5" (L)
- Weight: 4 lbs.



## SFR12/SFA12

Strobe Flasher

**SFR12** Red

**SFA12** Amber

- 6 - 12VDC
- Weather-resistant
- Dimensions (Base): 1.75" (H) x 3.75" (D)
- Designed for intermittent use only



# HDMI® Cables

Speco Technologies offers a line of HDMI accessories ideal for both A/V and CCTV installations. This comprehensive selection of cables, adapters and electronics are all well-priced and feature rich and are a perfect complement to any job.



HDCL25  
HDCL50



HDVL3  
HDVL6  
HDVL10  
HDVL15

Part Number	HDCL25,50	HDVL3,6,10,15
Cable length	25 ft., 50 ft.	3 ft., 6 ft., 10 ft., 15 ft.
Cable type	Class 2	Standard
Description	These thicker gauge cables are certified Class 2 (CL2), meaning they are safe for in-wall use.	These cables are perfect for most basic HDMI needs such as connecting a monitor to a DVR.

## HDMI to HDMI Adaptor

This adaptor is used to couple HDMI cables together or to protect your HDMI inputs by adding a flexible connection.

### HDF2FCP

Female to female HDMI adaptor

The terms HDMI and HDMI High-Definition Multimedia Interface, and the HDMI Logo are trademarks or registered trademarks of HDMI Licensing LLC in the United States and other countries.





## VG AHD2

VGA and Audio to HDMI Converter

- Converts VGA & analog stereo or digital audio (SPDIF) to HDMI
- Supports HDMI & DVI output mode (HDMI to DVI cable not included)
- Encodes analog stereo audio or digital audio onto the video signal for HDMI combined audio and video
- Built-in auto selection of analog or digital audio
- Supports PC resolution up to 1920x1200



Rear of Unit



## HDXTNDR

2-Cable HDMI Extender

- Extends an HDMI signal up to 100' using two Cat5e or Cat6 cables
- Supports resolutions up to and including 1080p or 1920x1080 on pass through



Rear of Unit



## HD4MAT

4 to 2 HDMI Matrix

- Supports 3D HDMI signals
- Supports resolutions up to and including 1080p
- Supports DTS/Dolby/DTS-HD/Dolby True HD/LPCM7.1/AC3
- Supports HDCP 1.2
- Supports simultaneous digital audio output: Stereo, Toslink and Coax
- Includes IR remote control



Rear of Unit



## HD2SPL2

HDMI 1 to 2 Splitter

## HD4SPL2

HDMI 1 to 4 Splitter

- Takes a single HDMI source and divides it into 2 (HD2SPL2) or 4 (HD4SPL2) monitors or televisions
- Supports 3D HDMI signals
- Supports a wide range of PC and HDTV resolutions from VGA to UXGA, and 480i to 1080p, up to 4K
- Supports DTS/Dolby/DTS-HD/Dolby True HD/LPCM7.1/AC3
- Supports HDCP 1.3
- Compatible with HDMI 1.4a



Rear of Unit



HD2SPL2



Rear of Unit



HD4SPL2



# BLUE Audio Accessories



No installation is complete without the accessories needed to finish the job. BLUE, by Speco Technologies, is a full-line of high-quality audio and video accessories, suitable for a wide range of commercial and residential applications. BLUE accessories are designed to finish your job, within your budget.

## CAMMIC2

Surface Mount Line Level Microphone

- Can be wall or ceiling mounted
- Designed for indoor spaces
- Ideal pickup range of 10 to 120 square feet
- Gain control to increase or reduce pick-up sensitivity



## CAMMICW

Pre-Amplified Line Level Mic

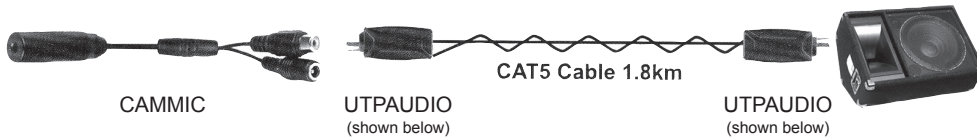
- Constructed out of Aluminum alloy for outdoor use
- Pickup indoors in rooms up to 120 square feet
- Integrated pre-amplification processing circuit
- Built-in high-speed voice processing



## CAMMIC

Pre-Amplified Line Level Mic

- Add-on mini-microphone for all systems
- High sensitivity microphone with 1.5 ft. power/audio cable
- Easy to install and ideal for all security surveillance voice recording applications
- Line level output



## UTPAUDIO

Audio CAT5 Extender and Ground Loop Device

- Gold-plated RCA female to RJ45
- Used in pairs via one CAT5 UTP cable to send audio signal of up to 1 mile
- 20Hz – 20kHz bandwidth
- Available for 75-120 Ohms cable
- High-performance to eliminate audio ground loop problem
- No power required
- Sold in pairs



## CAMMICV

Mini Line Level Microphone with Volume Adjustment

- Perfect companion product for any camera needing an audio input source
- Open board design makes the microphone compact and potentially covert
- High sensitivity microphone with 19.7" (500mm) power/audio cable
- 3.5mm connection for easy hookup to camera
- 12VDC power operation (PSW5 power supply not included)
- It is recommended to install this microphone over 15' away from the speaker to minimize the impact of potential feedback.



For The Complete Line of Audio and Video Accessories, go to [www.specotech.com](http://www.specotech.com)

# Compact Series 8 Ohms Weather-Resistant Horn Speakers

The compact series of horns from Speco Technologies are versatile enough to cover a wide range of applications from transportation to paging. Constructed of various materials, these 5" diameter horns offer a smaller profile to fit easily under car hoods or to discretely sit on a wall or ceiling.

## SPC5P

5" Weather-Resistant ABS Horn Speaker with 10' Cord and 3.5mm Plug - 8 Ohms

## SPC6P

5" Weather-Resistant ABS Horn Speaker with Metal Base - 8 Ohms

## SPC8

5" Weather-Resistant Aluminum Horn Speaker - 8 Ohms

### Features:

- Weather-resistant construction
- Compact 5" diameter, ideal for blending into background or fitting in small spaces
- Variety of materials and connection options
- Includes mounting bracket



SPC6P



SPC5P



SPC8



Part Number	SPC5P	SPC6P	SPC8
RMS Power	10W	10W	10W
Max Power	15W	15W	15W
Termination Type	3.5mm Mini-plug	Wire strip	Wire strip
Sensitivity (1W/1M)	105dB	105dB	105dB
Maximum SPL (P/Max)	106dB	106dB	106dB
Driver Impedance	8 Ohms	8 Ohms	8 Ohms
Magnet	3.6 oz. Ferrite	3.6 oz. Ferrite	3.6 oz. Ferrite
Frequency Response Range	300Hz ~ 15kHz	300Hz ~ 15kHz	300Hz ~ 15kHz
Dispersion @ 1000Hz	65° Conical	75° Conical	75° Conical
Speaker Dimensions	5" (Dia.) x 4.75" (D)	5" (Dia.) x 5.9" (D)	5" (Dia.) x 5" (D)
Weight	.92 lbs.	1 lbs.	.95 lbs.
Material	ABS	Body: ABS Base: Metal	Aluminum
Color	White	White	Body: Grey Base: Black



# Contractor Series 4 and 8 Ohms Weather-Resistant Horn Speakers

Speco Technologies' offers one of the most comprehensive lines of P.A. horns in the industry, with options available with or without transformers, in ABS or Aluminum, with power up to 75W, as well as with a slew of other features. Our contractor series of horns represents some of our best selling items in the category, with diameters ranging from 6" to 8".



## SPC10

6" Weather-Resistant Aluminum Horn - 8 Ohms

## SPC104

6" Weather-Resistant Aluminum Horn - 4 Ohms

## SPC15

8" Weather-Resistant Aluminum Horn - 8 Ohms



### Features:

- Weather-resistant, aluminum construction
- Includes mounting bracket
- Rubber bell protector

Part Number	SPC10	SPC104	SPC15				
RMS Power	10W	10W	15W	Frequency Response Range	250Hz ~ 15kHz	250Hz ~ 15kHz	200Hz ~ 15kHz
Max Power	15W	15W	25W	Dispersion @ 1000Hz	65° Conical	65° Conical	75° Conical
Termination Type	Wire strip	Wire strip	Wire strip	Speaker Dimensions	6" (Dia.) x 5.9" (D)	6" (Dia.) x 5.9" (D)	8" (Dia.) x 8" (D)
Sensitivity (1W/1M)	105dB	105dB	110dB	Weight	1.9 lbs.	1.9 lbs.	2.2 lbs.
Maximum SPL (P/Max)	108dB	108dB	115dB	Material	Aluminum	Aluminum	Aluminum
Driver Impedance	8 Ohms	4 Ohms	8 Ohms	Color	Grey	Grey	Grey
Magnet	5.4 oz. Ferrite	5.4 oz. Ferrite	6.6 oz. Ferrite				



# Horizontal Mount Rectangular 8 Ohms Weather-Resistant Horn Speakers

Rectangular horn speakers offer a wider dispersion range than your standard round horn. These horns from Speco Technologies come in a variety of sizes, materials and mounting options and offer a fantastic option for warehouses, sporting arenas, factories, schools, etc., and even come in a marine variation with extra conditioning suitable for nautical installations.

## SPC12RP

6" x 4" Weather-Resistant ABS Marine Horn Speaker – 8 Ohms

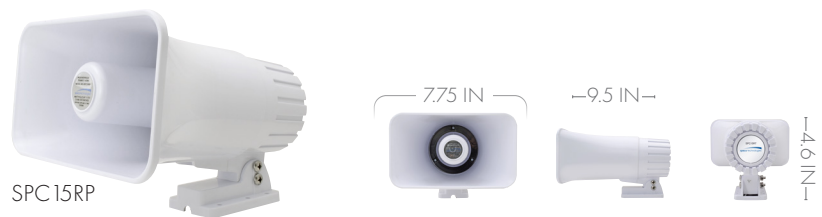


## SPC15RP

8" x 5" Weather-Resistant ABS Marine Horn Speaker – 8 Ohms

## SPC15R

8" x 5" Weather-Resistant Aluminum Horn Speaker – 8 Ohms



### Features:

- Weather-resistant construction
- Includes mounting brackets
- Variety of materials and mounting options



Part Number	SPC12RP	SPC15RP	SPC15R
RMS Power	20W	15W	15W
Max Power	30W	30W	25W
Termination Type	Wire strip	Wire strip	Wire strip
Sensitivity (1W/1M)	110dB	105dB	110dB
Maximum SPL (P/Max)	107dB @ 1.6kHz	116dB	115dB
Driver Impedance	8 Ohms	8 Ohms	8 Ohms
Magnet	5.4 oz. Ferrite	7.7 oz. Iron Oxide	6.6 oz. Ferrite
Frequency Response Range	200Hz ~ 15kHz	200Hz ~ 15kHz	200Hz ~ 15kHz
Dispersion @ 1000Hz	105° (H) x 40° (V)	150° (H) x 40° (V)	150° (H) x 60° (V)
Speaker Dimensions	6" (W) x 4" (H) x 7.9" (D)	7.75" (W) x 4.6" (H) x 9.5" (D)	8" (W) x 6" (H) x 8" (D)
Weight	1.65 lbs.	2.4 lbs.	2 lbs.
Material	ABS	ABS	Aluminum
Color	White	White	Grey

# Commercial Series 70/25V P.A. Horn Speakers

Speco Technologies' Commercial Series of horn speakers offer a great combination of quality, sound and value. These horns are ideal for almost any commercial application, and will last a long time with high-quality, solid weather-resistant construction.

## SPC10RT

7" x 5" Weather-Resistant P.A. Horn Speaker - 70/25V

## SPC15RT

8" x 6" Weather-Resistant P.A. Horn Speaker - 70/25V

## SPC30RT

11" x 8" Weather-Resistant P.A. Horn Speaker - 70/25V



### Features:

- Stylish appearance
- Weather-resistant, ABS construction
- Includes mounting bracket



Part Number	SPC10RT	SPC15RT	SPC30RT
RMS Power	10W	15W	30W
Max Power	20W	30W	60W
Transformer Type	70/25V	70/25V	70/25V
Transformer Power Taps	70V: 10W, 5W, 3W, 1W 25V: 10W, 5W, 1.3W, 0.6W, 0.4W, 0.1W	70V: 15W, 10W, 5W, 3W, 1W 25V: 15W, 10W, 5W, 1.3W, 0.6W, 0.4W, 0.1W	70V: 30W, 15W, 10W, 5W, 3W, 1W 25V: 30W, 15W, 10W, 3.7W, 1.9W, 1.3W, 0.6W, 0.4W, 0.1W
Termination Type	Wire strip	Wire strip	Wire strip
Sensitivity (1W/1M)	103dB	105dB	107dB
Maximum SPL (P/Max)	113dB	117dB	122dB
Driver Impedance	8 Ohms	8 Ohms	8 Ohms
Magnet	4.1 oz.	5.1 oz.	5.3 oz.
Frequency Response Range	500Hz ~ 15kHz	450Hz ~ 15kHz	350Hz ~ 15kHz
Dispersion @ 1000Hz	65° Conical	70° (H) x 60° (V)	90° (H) x 60° (V)
Speaker Dimensions	7" (W) x 5" (H) x 5" (D)	8.8" (W) x 6.25" (H) x 8.9" (D)	11" (W) x 8" (H) x 10.25" (D)
Weight	3 lbs.	3.6 lbs.	4.2 lbs.
Material	ABS	ABS	ABS
Color	Khaki	Khaki	Khaki

# Contractor Series 70/25V Weather-Resistant P.A. Horn Speakers

Speco Technologies' offers one of the most comprehensive lines of P.A. horns in the industry, with options available with or without transformers, in ABS or Aluminum, with power up to 75W, as well as with a slew of other features. Our contractor series of horns represents some of our best selling items in the category, with diameters ranging from 6" to 15" and in 70/25V or 8 Ohms models. A high degree of engineering went into this unit and it can accomplish in a very cost-effective manner what formerly required a high-end digital system or multiple amplifiers.

## SPC10T

6.5" Weather-Resistant Aluminum P.A. Horn  
- 70/25V

## SPC15T

8.5" Weather-Resistant Aluminum P.A. Horn  
- 70/25V

## SPC30T

10.5" Weather-Resistant Aluminum P.A.  
Horn - 70/25V

### Features:

- Weather-resistant, aluminum construction
- Includes mounting bracket
- Rubber bell protector
- Selectable 70/25V transformer dial



Part Number	SPC10T	SPC15T	SPC30T
RMS Power	10W	15W	30W
Max Power	20W	30W	60W
Transformer Type	70/25V	70/25V	70/25V
Transformer Power Taps	70V: 10W, 5W, 3W, 1W 25V: 10W, 5W, 1.3W, 0.6W, 0.4W, 0.1W	70V: 15W, 10W, 5W, 3W, 1W 25V: 15W, 10W, 3.7W, 1.9W, 1.3W, 0.6W, 0.4W, 0.1W	70V: 30W, 15W, 10W, 5W, 3W, 1W 25V: 30W, 15W, 10W, 3.7W, 1.9W, 1.3W, 0.6W, 0.4W, 0.1W
Termination Type	Wire strip	Wire strip	Wire strip
Sensitivity (1W/1M)	103dB	105dB	107dB
Maximum SPL (P/Max)	113dB	117dB	122dB
Driver Impedance	8 Ohms	8 Ohms	8 Ohms
Magnet	4.1 oz.	4.9 oz. Ferrite	5.3 oz. Ferrite
Frequency Response Range	500Hz ~ 15kHz	450Hz ~ 15kHz	350Hz ~ 15kHz
Dispersion @ 1000Hz	65° Conical	75° Conical	85° Conical
Speaker Dimensions	6.5" (Dia.) x 7.25" (D)	8.5" (Dia.) x 9" (D)	10.5" (Dia.) x 10" (D)
Weight	2.6 lbs.	3.2 lbs.	3.9 lbs.
Material	Aluminum	Aluminum	Aluminum
Color	Grey	Grey	Grey



# Vertical Mount Rectangular Weather-Resistant Horn Speakers

Rectangular horn speakers offer a wider dispersion range than your standard round horn. These horns from Speco Technologies come in a variety of sizes, materials and mounting options and offer a fantastic option for warehouses, sporting arenas, factories, schools, etc.

## SPC40RP

6.5" x 11" Weather-Resistant ABS Horn Speaker - 8 Ohms

## SPC40RT

6.5" x 11" Weather-Resistant ABS Horn Speaker - 70/25 Volt

### Features:

- Weather-resistant construction
- Includes mounting brackets
- Variety of materials and mounting options



Part Number	SPC40RP	SPC40RT
RMS Power	20W	32W
Max Power	40W	60W
Transformer Type	n/a	70/25V
Transformer Power Taps	n/a	32W, 16W, 8W, 4W, 2W
Termination Type	Wire strip	Wire strip
Sensitivity (1W/1M)	110dB	110dB
Maximum SPL (P/Max)	120dB	124dB
Driver Impedance	8 Ohms	8 Ohms
Magnet	11.6 oz. Iron Oxide	11.6 oz. Ferrite
Frequency Response Range	200Hz ~ 15kHz	250Hz ~ 15kHz
Dispersion @ 1000Hz	160° (H) x 50° (V)	160° (H) x 70° (V)
Speaker Dimensions	6" (W) x 10.9" (H) x 8.4" (D)	6.5" (W) x 11" (H) x 13" (D)
Weight	3 lbs.	6 lbs.
Material	Body: ABS Bracket: Aluminum	ABS
Color	White	White

# Weather-Resistant Alarm Sirens



## SA15RP

5" White ABS Dual Tone Siren

## SA4P

4" Black ABS Siren

## SA5P

5" White ABS Siren

Part Number	SA15RP	SA4P	SA5P
RMS Power	30W	20W	20W
Max Power	30W	20W	20W
Termination Type	Wire strip	Wire Strip	Wire strip
Sensitivity (1W/1M)	120dB	120dB	107dB
Maximum SPL (P/Max)	113dB	117dB	122dB
Driver Impedance	8 Ohms	8 Ohms	8 Ohms
Color	White	Black	Body: Grey Base: Black



### Features:

- Compact design
- Warbling tone
- Weather-resistant ABS plastic
- Operates on 6 – 12VDC

# Projection Horn Casings & Drivers

Create the perfect projection horn for your application by pairing our casings with our universal drivers.

## SRH20

20" Aluminum Weather-Resistant Projector Horn for use with SRD Drivers



## SRD80T

80W RMS Universal Driver with Built-In 70 Volt Line Transformer

## SRD100

100W RMS 16 Ohms Universal Driver-16 Ohms



Part Number	SRH20	SRD80T	SRD100
RMS Power	n/a	80W	100W
Max Power	n/a	100W	120W
Frequency Response	n/a	300Hz ~ 5kHz	250Hz ~ 8kHz
Impedance	n/a	16Ohms	16Ohms
Transformer	n/a	70V	n/a
Transformer Taps	n/a	80W, 40W, 20W, 10W, 5W	n/a
Sensitivity (1W/1M)	n/a	112dB	113dB
Dispersion	80°	n/a	n/a
Low End Cutoff	250Hz	n/a	n/a
Dimensions	20" (Dia.) x 13.6" (D)	6 (Dia.) Throat Dia.: 1.375 x 18 TPI	6 (Dia.) Throat Dia.: 1.3 x 18 TPI

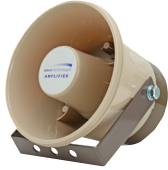
# NVR/DVR Audio Accessory Kits

ALL KITS ARE DESIGNED FOR USE WITH SPECOS TECHNOLOGIES DVRs /NVRs

## DIGITAL DETERRENT™ AUDIO KITS\* DON'T JUST RECORD CRIME, PREVENT IT!

## TWO-WAY AUDIO KITS\*

### DDAK4



ASPC20 Amplified Horn



PSDC24 Power Supply

### 2WAK2



PVL15A Amplifier



CAMMIC  
Pre-Amplified Line  
Level Mic

DMS3TS  
Speaker



### DDK2



PVL15A Amplifier



SPC15RP Amplified Horn



PSW5 Power Supply



SFR12

### 2WAK3



PBM30 Amplifier



CAMMIC  
Pre-Amplified Line  
Level Mic

DMS3TS  
Speaker



### DDK3



PBM30 Amplifier



SPC15RP Amplified Horn



PSW5 Power Supply



SFR12

### 2WAK4



ASPC20 Amplified Horn



CAMMIC  
Pre-Amplified Line  
Level Mic



PSW5 Power Supply

\* Feature available on most Speco Technologies DVRs/NVRs

# W

In some installations it makes sense to have amplification locally at the speaker rather than pushed from a central location. The ASPC20 offers an economical alternative by combining the horn speaker and amp into one unit. This unit is also ideal for use with Speco Technologies patented DVR technologies such as Digital Deterrent and two-way audio.

## ASPC20

6" Amplified Weather-Resistant ABS P.A. Horn Speaker

### Features:

- Weather-resistant, ABS construction
- Includes mounting bracket
- Requires a 10-16V DC power supply (not included)
- 2A, 3AG Fuse

Sold individually

## ASPC20W

6" Amplified Weather-Resistant ABS P.A. Horn Speaker

### Features:

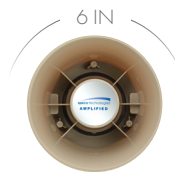
- Weather-resistant, ABS construction
- Includes mounting bracket
- Requires a 10-16V DC power supply (not included)
- 2A, 3AG Fuse

Sold individually



Part Number	ASPC20/ ASPC20W
RMS Power	7W
Max Power	20W
Termination Type	Wire strip
Sensitivity (1W/1M)	102dB
Maximum SPL (P/Max)	115dB
Driver Impedance	8 Ohms
Magnet	5.3 oz. Ferrite
Frequency Response Range	500Hz ~ 5kHz
Dispersion @ 1000Hz	90° Conical
Speaker Dimensions	6" (Dia.) x 6" (D)
Weight	2.4 lbs.
Material	Body : ABS Bracket: Iron
Color	Khaki Body, Brown Base

Power/Audio Cable Included





# 70/25V Wall Plate Volume Controls

## WAT10DW



## WAT50



### Features:

- Standard wall-plate style
- 11 step attenuation
- Total attenuation at 33db
- Fits standard single gang high-cube junction box
- Set screw wire connection
- Accepts up to 12 gauge wire

Units with "W" come with white plastic plate & white knob  
 Units with a silver plate come with a black knob

Part Number	WAT10	WAT10DW	WAT50	WAT50DW
Sound	Mono	Mono	Mono	Mono
Wattage	10W	10W	50W	50W
Output	70/25V	70/25V	70/25V	70/25V
Knob/plate color	Black/Silver	White	Black/Silver	White
Plate Material	Stainless Steel	ABS	Stainless Steel	ABS

## WAT100D

100W 70/25 Slider Volume Control  
 with Swappable Décora Plates

Part Number	WAT100D
Sound	Mono
Wattage	100W
Output	70/25V
Knob/plate color	White, Ivory or Almond (all included)
Plate Material	ABS



# Residential Audio

SEE PAGE 7 FOR COMMERCIAL AUDIO



**speco technologies**  
Giving You More.

# Custom Series In-Ceiling Residential Speakers

Speco Technologies' Custom Series ceiling speakers are the perfect combination of performance and value. Designed to continue our rich history of audio innovation, the Custom Builder Series speakers are created for today's listening environments and lifestyles. Whether using these speakers in the home or office, they will provide performance, reliability and enjoyment for years to come. Custom Builder speakers offer premium features at an economical price point. Custom Designer speakers are designed with improved specs and features to offer a fantastic option for whole house audio installations.

## SPCBC5

5.25" Custom Builder In-Ceiling Speaker (Pair)

## SPCBC6

6.5" Custom Builder In-Ceiling Speaker (Pair)



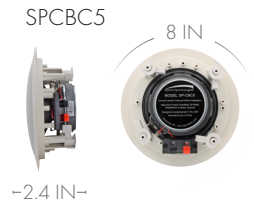
### Features:

- Integrated C-clamp mounting system
- Polymer woofer cones for improved acoustic response
- Liquid-cooled titanium anodized tweeters with a minimum diffraction pivoting island
- Powder coated grille may be painted to match any décor



All speakers sold in pairs

Part Number	SPCBC5	SPCBC6
Tweeter	Integrated wave guide	1/2" (zero diffraction) pivoting poly-laminate, liquid cooled dome
Woofer	5.25" poly-laminate with rubber surround	6.5" mineral filled poly-laminate cone with rubber surround
Crossover	Full range	6dB per octave
Input connection	Push terminals	Push terminals
Recommended Amplifier Power	5W to 50W (80 watts peak)	5W to 60W (100 watts peak)
Impedance	8 Ohms	8 Ohms
Frequency Response Range	70Hz ~ 18kHz	58Hz ~ 21 kHz
Sensitivity (1W/1M)	90dB	90dB
Baffle	Poly-carbonate for reduced resonance with C-clamp mounting system	Poly-carbonate for reduced resonance with C-clamp mounting system
Grille	Corrosion resistant powder coated metal	Corrosion resistant powder coated metal
Outside Dimensions	8" round (Dia.)	9" round (Dia.)
Depth	2.4" (mounted in 1/2" drywall)	2.75" (mounted in 1/2" drywall)
Retrofit Cutout Diameter	6.5" (use template before cutting)	7.5" (use template before cutting)
Optional New Construction Brackets	BRC5	BRC6





# Custom Series In-Ceiling Residential Speakers

Speco Technologies' Custom Designer series takes the extremely popular Custom Builder speakers and makes them even better. The power has been bumped up to a 100W peak value, the woofer has been improved to be mica filled poly laminate, and the grill is now an easy install magnetic design. The speaker retains the zero-diffraction pivoting tweeter island and liquid-cooled Titanium tweeter of its predecessor, and overall is a worthy alternative to much more expensive whole-house speakers.

## SPCDC6

6.5" Custom Designer In-Ceiling Speaker

### Features:

- Integrated C-clamp mounting system
- Polymer woofer cones for improved acoustic response
- Liquid-cooled titanium anodized tweeters with a minimum diffraction pivoting island
- Powder coated grille may be painted to match any décor

All speakers sold in pairs



Easy-install magnetic grille

Part Number	SPCDC6
Tweeter	1/2" (zero diffraction) pivoting poly-laminate, liquid cooled dome
Woofer	6.5" mica filled poly laminate cone with rubber surround
Crossover	6dB per octave electro-acoustic
Input Connection	Push terminals
Recommended Amplifier Power	5W to 65W (100 watts peak)
Impedance	8 Ohms
Frequency Response Range	48Hz ~ 21kHz
Sensitivity (1W/1M)	90dB
Baffle	Poly-carbonate for reduced resonance with C-clamp mounting system
Grille	Corrosion resistant powder coated metal, magnetic
Outside dimensions	9" round (Dia.)
Depth	3.46" (mounted in 1/2" drywall)
Retrofit Cutout Diameter	7.5" (use template before cutting)
Optional New Construction Brackets	BRC6



-3.46 IN-



# Contractor Series Enclosed Residential In-Ceiling Speakers

Speco Technologies has been a leader in contractor grade residential speakers for many years. The SP6ECS offers a full-range coaxial speaker with a plastic enclosure. This back box offers extra component protection and consistent and improved sound quality over open back speakers.

## SP6ECS

6.5" Speaker with Enclosed Backcan

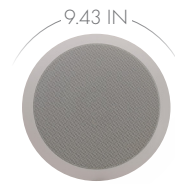
### Features:

- ABS backcan
- C-clamp mounting system

All speakers sold in pairs



Part Number	SP6ECS
RMS Power	35W
Max Power	70W
Termination Type	Press terminal
Sensitivity (1W/1M)	90dB
Maximum SPL (Pmax/1m)	93.1 dB
Driver Impedance	8 Ohms
Magnet	11.6 oz. Ferrite
Frequency Response Range	65Hz ~ 20kHz
Dispersion @ 1000Hz	120° Conical
Driver	6.5" Polypropylene woofer, 0.5" Mylar tweeter
Speaker Dimensions	9.43" (Dia.) x 6.1" (D)
Mounting Dimensions	8.25" (Dia.)
Minimum Mounting Depth	5.6"
Weight	3.52 lbs.
Material	Baffle: ABS Backcan: ABS Grille: Metal
Color	White
Optional Mounting Bracket	BRC6F



— 6.1 IN —



# Series 25 In-Ceiling Speaker Line

We've utilized many years of sound expertise in developing the core of our in-ceiling speakers: The Series 25 audio line. Manufactured from durable and quality components, these speakers provide exceptional value. Enjoy the premium performance of full-range sound in your listening environment with these high-quality speakers.



## SP525C

5.25" In-Ceiling Speaker

## SP625C

6.5" In-Ceiling Speaker

### Features:

- Stylish baffle design
- Pivoting tweeter

All speakers sold in pairs



series



Part Number	SP525C	SP625C
RMS Power	30W	40W
Max Power	60W	80W
Termination Type	Press terminal	Press terminal
Sensitivity (1W/1M)	87dB	89dB
Maximum SPL (Pmax/1m)	94.3dB	95.5dB
Driver Impedance	8 Ohms	8 Ohms
Magnet	10 oz. Ferrite	11.6 oz. Ferrite
Frequency Response Range	70Hz ~ 20kHz	50Hz ~ 20kHz
Dispersion @ 1000Hz	85° Conical	85° Conical
Driver	5.25" Polypropylene woofer, 0.75" Silk tweeter	6.5" Polypropylene woofer, 1" Silk tweeter
Speaker Dimensions	8" (Dia.) x 4" (D)	9.25" (Dia.) x 4.25" (D)
Mounting Dimensions	6.6" (Dia.)	7.75" (Dia.)
Minimum Mounting Depth	3.5"	3.75"
Weight	2.4 lbs.	3 lbs.
Material	Baffle: ABS Grille: Metal	Baffle: ABS Grille: Metal
Color	White	White
Optional Mounting Bracket	BRC5	BRC6



SP525C



SP625C

# Contractor Elite Series Indoor/Outdoor Wall-Mount Speakers

Contractor Elite is far from your common speaker line. Though designed to fit into your budget, these speakers are built with high-performance materials and features you'd find in high-end residential installations. The Contractor Elite Outdoor speaker line provides amazing sound, stylish looks, and easy installations – all for an amazing price.

## SPCE5OW

5.25", white housing, 8 Ohms

## SPCE5OB

5.25", black housing, 8 Ohms

## SPCE6OW

6.5", white housing, 8 Ohms

## SPCE6OB

6.5", black housing, 8 Ohms



### Features:

- Great sound at an affordable price
- IP66 compliant, weather resistant
- Aluminum grille for extended use in outdoor environments
- "T" models come with a selectable 70V transformer
- 5 year warranty against manufacturing defects



All speakers sold in pairs

Part Number	SPCE5OW	SPCE5OB	SPCE6OW	SPCE6OB
RMS Output Power	40W	40W	60W	60W
Max Output Power	80W	80W	120W	120W
Sensitivity (1W/1M)	84dB	84dB	88dB	88dB
Maximum SPL (Pmax/1M)	100dB	100dB	102dB	102dB
Driver Impedance	8 Ohms	8 Ohms	8 Ohms	8 Ohms
Frequency Response Range	90Hz - 20kHz	90Hz - 20kHz	85Hz - 20kHz	85Hz - 20kHz
Driver	5.25" polypropylene woofer, 0.75" silk dome tweeter	5.25" polypropylene woofer, 0.75" silk dome tweeter	6.5" polypropylene woofer, 1" silk dome tweeter	6.5" polypropylene woofer, 1" silk dome tweeter
Dimensions	7" (L) x 5.5" (D) x 11.3" (H)	7" (L) x 5.5" (D) x 11.3" (H)	7.9" (L) x 6.6" (D) x 12.6" (H)	7.9" (L) x 6.6" (D) x 12.6" (H)
Speaker Grille Material	Aluminum	Aluminum	Aluminum	Aluminum
Color	White	Black	White	Black



Side



Front



# Audio Speaker Support Brackets

## BRC6E

Metal In-Ceiling Brackets for 6.5" speakers

## BRC6F/BRC8F

Metal In-Ceiling Brackets for 6.5" or 8" speakers

## BRC5/BRC6

Metal In-Ceiling Brackets for 5.25" or 6.5" speakers

## BRC8

Metal In-Ceiling Brackets for 8" speakers

All brackets sold in pairs



All brackets manufactured from .025" thick galvanized steel

Part Number	BRC6E	BRC6F	BRC8F	BRC5	BRC6	BRC8
Description Dimensions	Metal In-Ceiling Brackets for 6.5" speakers	Metal In-Ceiling Brackets for 6.5" speakers	Metal In-Ceiling Brackets for 8" speakers	Metal In-Ceiling Brackets for 5.25" speakers	Metal In-Ceiling Brackets for 6.5" speakers	Metal In-Ceiling Brackets for 8" speakers
Outer Dimensions	16.75", 2" support rails	16.75", 2" support rails	16.75", 2" support rails	16.75", 2" support rails	16.75", 2" support rails	16.75", 2" support rails
Speaker Cut-Out	10.625"	8.38"	9.88"	6.63"	7.75"	9.5"
Compatible Speaker Models	SPCE6T	SP6ECS SP5MAT	SP8ECS SP6MAT	SPCBC5	SPCBC6 SPCDC6 SPG66T SPG66TC	SPCBC8 SPG86T SPG86TC

# Attenuators, Volume Controls & Accessories

## IMP100DLWH

100 Watt Impedance Matching Slider Volume Control



- High-quality auto-former design
- 1 – 8 speaker pairs
- Switchable impedance matching 2x, 4x, or 8x positions and stereo non-impedance matching 1x position
- Soft touch 12-step slide attenuation
- Frequency Response Range: 20Hz ~ 20kHz
- Removable terminal blocks accept up to 14-gauge wire
- Mounting Requirements: fits all single-gang backless p-rings or 19 cubic inch min. electrical work box
- Mounting Dimensions: 1.63" (W) x 2.74" (H) x 2.66" (D)



## IMP80D

80 Watt Impedance Matching Rotary Volume Control



- Includes three knob/plate color variations: white, ivory and almond
- High-quality auto-former design
- 2 - 16 speaker pairs
- Switchable impedance matching for 2, 4, 8 or 16 pairs of 8 Ohms speakers
- Soft touch 12-step rotary attenuation
- Frequency Response Range: 20Hz ~ 20kHz
- Removable terminal blocks accept up to 14-gauge wire
- Mounting Requirements: fits all single-gang backless p-rings or 18 cubic inch min. electrical work box
- Mounting Dimensions: 1.63" (W) x 2.85" (H) x 2.35" (D)
- Optional outdoor kit available: VCODK1 (sold separately)

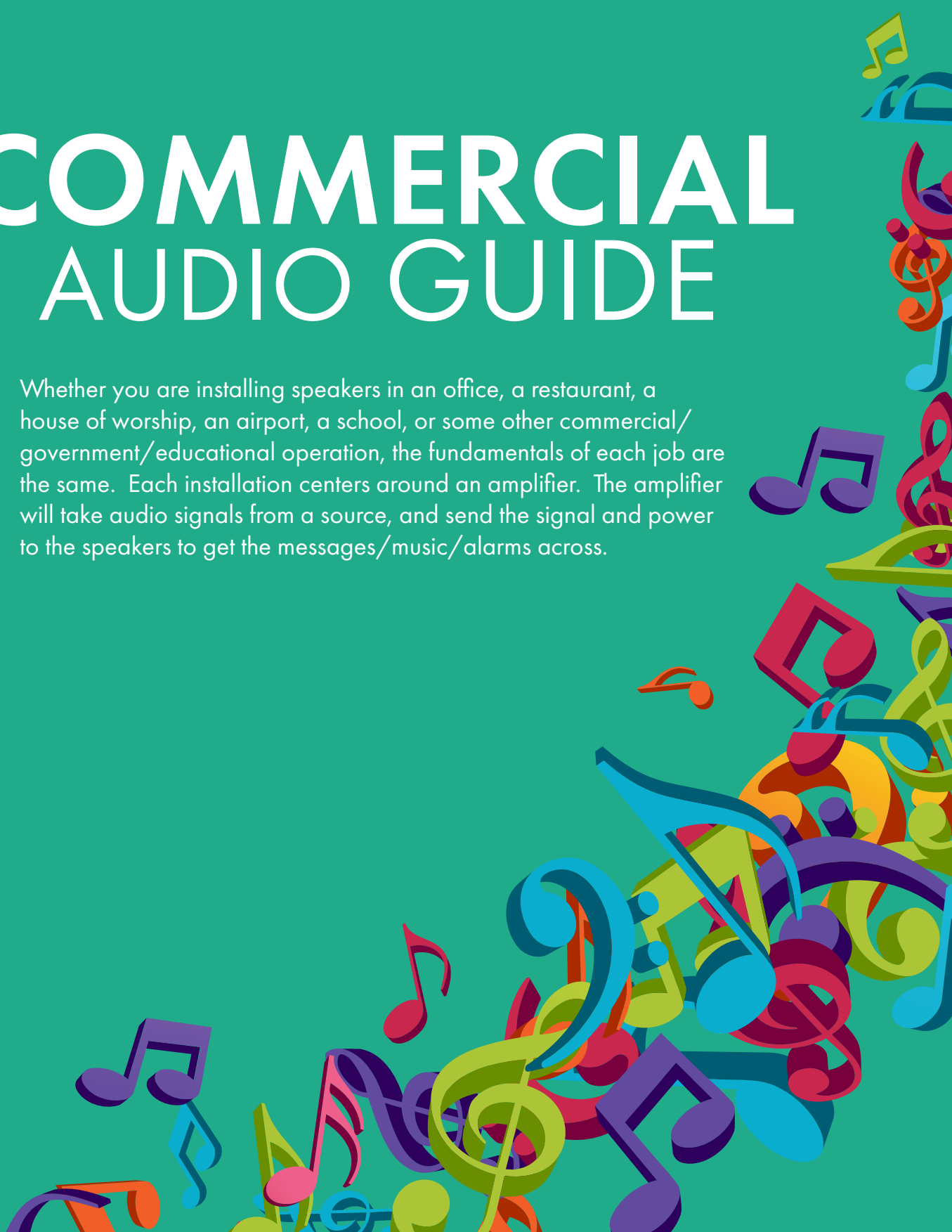






# COMMERCIAL AUDIO GUIDE

Whether you are installing speakers in an office, a restaurant, a house of worship, an airport, a school, or some other commercial/government/educational operation, the fundamentals of each job are the same. Each installation centers around an amplifier. The amplifier will take audio signals from a source, and send the signal and power to the speakers to get the messages/music/alarms across.



# Commercial Audio Overview

## What Is a 70 Volt Sound System & What Is It Used For?

A 70 Volt Sound System is comprised of amplifiers, speakers with transformers, microphones, volume controls, a telephone system interface and an assortment of wires used as connections. It is generally used for commercial sound applications where there is a need for electronically amplifying and distributing sound for the functions of paging, playing music and/or pre-recorded messages to a commercial environment.

## What Are The Components That Make Up a 70 Volt Sound System?

**Centralized Amplifier:** The central unit of a 70 Volt System is the amplifier that boosts the sound signal to be distributed to pre-established speakers or paging horn loudspeakers. There are power amplifiers, which are rack-mountable and have no external controls, and packaged amplifiers, which have pre-amp features such as volume controls, bass/treble controls, etc., that are built into the amplifier; making it a pre-amp and power amp all in one unit. Amplifiers have many diverse features and input and output connections. They can feature XLR MIC Connectors or MIC terminal strip connections, auxiliary/RCA inputs for music sources, and 600 Ohm telephone inputs. Most commercial amplifiers have speaker outputs for 4/8/16 Ohms and 70V systems. Most Speco Technologies amplifiers offer a 'Music-on-hold' output feature to allow customers on hold to hear music or prerecorded advertising.

**Speakers:** There are several different types of speakers including in-ceiling, in-wall, baffle and flush-mount cone speakers or horn loudspeakers. Optimal speaker selection for each installation depends on the application where the speaker is being used. It can also depend upon the size of the area needed to be covered, the ambient noise level of the environment, whether the speaker will be used for foreground/background music or voice, and whether the speaker will be used indoors or outdoors.

For 70 Volt Systems in commercial applications, the speakers must have a transformer mounted on it to be used.

**Transformers:** Transformers that are used on 70 Volt System speakers are step-down transformers that convert the high-voltage/low-current coming from the amplifier to the low-voltage/high-current signal going to the speaker. A transformer most often has multiple wattage taps that allow each speaker to be individually set as to how much wattage will enter the speaker and how loud each speaker will be. Transformers can be sold individually to be mounted on a speaker or pre-mounted on a speaker.

**Phone System Interface Device:** These systems are used to connect a phone system to the speaker system via an amplifier for paging purposes.

**Microphones:** Located in the front end of the system, they will receive the delivered sound. Microphones are typically low impedance devices that require a shielded cable so as to not to interfere with the amplifier or speaker wires.

**Wires:** Generally, speaker wire is determined by the length of the run and wattage utilized: For wire runs less than 50 ft. and 50 Watts of power or less use 16 gauge wire. For wire runs more than 50 ft. or over 50 Watts of power use 14 gauge wire.

### Volume Controls/Attenuators:

Allow adjustment of volume to speakers.

## What Are The Benefits of Using a 70 Volt Sound System?

A 70 Volt System uses a basis of high voltage to result in a lower current when distributing power to a sound system. Power equals voltage times current, thus a higher voltage will result in a lower current needed to arrive at a desired power load. By not having excessive, wasted current, **long runs of wire can be prevented from overheating.** This makes 70 Volt Systems very energy efficient. Many municipalities in America actually require the use of 25 Volt transformers because certain electrical codes will classify a 25 Volt system as low voltage, thus making it safer.

Generally speaking, 70 Volt Systems are much more **cost efficient** than an 8 Ohm speaker system when dealing with volume installation of speakers. 70 Volt Systems are **easier to design** than 8 Ohm speaker systems. The impedance does not have to be matched throughout the 70 Volt system as it would on an 8 Ohm based system.

70 Volt Systems can have their speakers **daisy chained** in parallel together without

worry. Because 70 Volt speakers come with transformers, **impedance is not an issue** unless an excessive amount of speakers are going to be installed together. It is recommended to use multiple wire runs back to the amplifier as opposed to a single run. This will reduce location problems that occur and make it easier to find by isolating it on individual small speaker runs.

An easy calculation is all that is needed in determining the amount of wattage needed by your amplifier. Take the total wattage requirement of the 70 Volt speakers, or "load", include a 20% safety buffer to the upside and you will obtain the minimum RMS wattage.

70 Volt Systems allow the volume of each individual speaker in a specific area to be set using wattage taps. The higher the wattage taps are set on individual speakers, the more power the speaker consumes, the louder the speaker will be.

The speaker transformer serves as a safeguard to make sure individual speakers are not damaged by excessive wattage.

## Designing a 70 Volt System: Which Type of 70V Speaker Should I Use?

**In-Ceiling Speakers:** Best utilized in 8, 10 & 12 ft. drop ceilings in professional environments with low noise levels. Great for background music and/or paging. Ceiling support brackets should be used with in-ceiling speakers.

**Wall Baffle or Wall Mount Speakers:** Best utilized when the ceiling's height is prohibitive to speaker placement and/or speakers can not be mounted on the ceiling at all.

**P.A. Horns:** Horns are usually utilized in loud environments when distinct, and powerful paging messages are needed or when large areas must be covered. In addition, most P.A. Horns are weather-resistant and are used for outdoor applications such as loading docks and sports fields.

## How Many Speakers Should I Use? Determining Proper Use Quantity For In-Ceiling Speakers:

The industry standard for calculating the proper amount of in-ceiling speakers for a specific area is to should have twice the space from the floor to the ceiling between the placement of each speaker on the ceiling, as shown in

Diagram 1:

Ceiling Speakers Should be Spaced Apart at Twice the Space of the Ceiling Height

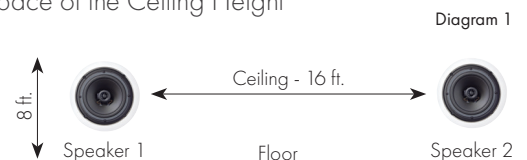


Diagram 1

For example, if your installation involves an 8 foot ceiling, then the speakers should be placed 16 feet apart on a square footage basis which equals 256 ft. of ceiling area covered. The square area coverage chart (below) shows specific ceiling heights.

### Speaker Square Footage Coverage for Ceiling Heights

Ceiling Height	Speaker Spacing (ceiling height x2)	Square Feet Coverage per Speaker
8 ft.	16 ft.	16 x 16 = 256 ft.
10 ft.	20 ft.	16 x 16 = 400 ft.
12 ft.	24 ft.	24 x 24 = 576 ft.

You will notice, lowering the ceiling height results in the less square footage coverage per speaker, or the more speakers you will need. This is due to less downward space for sound dispersion before it reaches the listener. The following page contains a reference chart for determining the correct number of speakers needed for a specific area to assure proper dispersion of sound.

# Commercial Audio Guide

Correct Number of In-Ceiling Speakers Needed for Proper Sound Dispersion in Room Areas

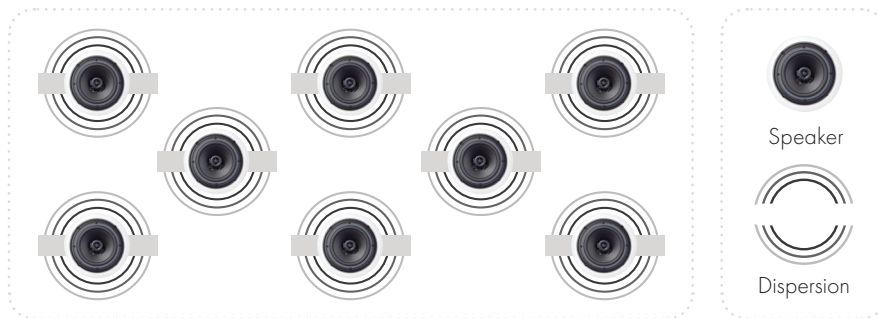
Length of Installment Room

		10	15	20	25	30	35	40	50	60	70	80	90	100	110	120	130	140	150
10	8' Ceilings	1	1	1	2	2	2	2	3	4	4	5	6	6	7	8	8	9	9
	10' Ceilings	1	1	1	1	2	2	2	3	3	4	4	5	5	6	6	7	7	8
	12" Ceilings	1	1	1	1	1	2	2	2	2	3	3	4	4	5	5	5	6	6
15	8' Ceilings	1	1	1	2	2	2	2	3	4	4	5	6	6	7	8	8	9	9
	10' Ceilings	1	1	1	1	2	2	2	3	3	4	4	5	5	6	6	7	7	8
	12" Ceilings	1	1	1	1	1	2	2	2	2	3	3	4	4	5	5	5	6	6
20	8' Ceilings	1	1	2	2	2	3	3	4	5	6	6	7	8	9	10	10	11	12
	10' Ceilings	1	1	1	1	2	2	2	3	3	4	4	5	5	6	6	7	7	8
	12" Ceilings	1	1	1	1	1	2	2	2	2	3	3	4	4	4	4	5	5	5
25	8' Ceilings	2	2	2	3	3	4	4	5	6	7	8	9	10	11	12	13	14	15
	10' Ceilings	1	1	1	2	2	2	3	3	4	4	5	6	6	7	8	8	9	9
	12" Ceilings	1	1	1	1	1	2	2	2	3	3	3	4	4	5	5	6	6	7
30	8' Ceilings	2	2	2	3	4	4	5	6	7	8	10	11	12	13	14	15	17	18
	10' Ceilings	2	2	2	2	2	3	3	4	5	5	6	7	8	8	9	10	11	11
	12" Ceilings	1	1	1	1	2	2	2	3	3	4	4	5	5	6	6	7	7	8
35	8' Ceilings	2	2	3	4	4	5	6	7	8	10	11	13	14	15	17	18	20	21
	10' Ceilings	2	2	2	2	3	3	4	4	5	6	7	8	9	10	11	11	12	13
	12" Ceilings	2	2	2	2	2	2	2	3	4	4	5	5	6	7	7	8	9	9
40	8' Ceilings	2	2	3	4	5	6	6	8	9	11	13	14	16	17	19	20	22	24
	10' Ceilings	2	2	2	3	3	4	4	5	6	7	8	9	10	11	12	13	14	15
	12" Ceilings	2	2	2	2	2	2	3	3	4	5	6	6	7	8	8	9	10	10
50	8' Ceilings	3	3	4	5	6	7	8	10	12	14	16	18	20	22	24	26	28	29
	10' Ceilings	3	3	3	3	4	4	5	6	8	9	10	11	13	14	15	16	18	19
	12" Ceilings	2	1	2	2	3	3	3	4	5	6	7	8	9	10	10	11	12	13
60	8' Ceilings	4	4	5	6	7	8	9	12	14	17	19	21	24	26	28	31	33	35
	10' Ceilings	3	3	3	4	5	5	6	8	9	11	12	14	15	17	18	20	21	23
	12" Ceilings	2	2	2	3	3	4	4	5	6	7	8	9	10	11	13	14	15	16
70	8' Ceilings	4	4	6	7	8	10	11	14	17	19	22	25	27	30	33	36	39	41
	10' Ceilings	4	4	4	4	5	6	7	9	11	12	14	16	18	19	21	23	25	26
	12" Ceilings	3	3	3	3	4	4	5	6	7	9	10	11	12	13	15	16	17	18
80	8' Ceilings	5	5	6	8	10	11	13	16	19	22	25	28	31	35	38	41	44	47
	10' Ceilings	4	4	4	5	6	7	8	10	12	14	16	18	20	22	24	26	28	30
	12" Ceilings	3	3	3	3	4	5	6	7	8	10	11	13	14	15	17	18	19	21
90	8' Ceilings	6	6	7	9	11	13	14	18	21	25	28	32	35	39	42	46	49	53
	10' Ceilings	5	5	5	6	7	8	9	11	14	16	18	20	23	25	27	29	32	34
	12" Ceilings	4	4	4	4	5	5	6	8	9	11	13	14	16	17	19	20	22	23
100	8' Ceilings	6	6	8	10	12	14	16	20	24	27	31	35	39	43	47	51	55	59
	10' Ceilings	5	5	5	6	8	9	10	13	15	18	20	23	25	28	30	33	35	38
	12" Ceilings	4	4	4	4	5	6	7	9	10	12	14	16	17	19	21	23	24	26
110	8' Ceilings	7	7	9	11	13	15	17	22	26	30	35	39	43	47	52	56	60	65
	10' Ceilings	6	6	6	7	8	10	11	14	17	19	22	25	28	30	33	36	39	42
	12" Ceilings	5	5	4	5	6	7	8	10	11	13	15	17	19	21	23	25	27	29
120	8' Ceilings	8	8	10	12	14	17	19	24	28	33	38	42	47	52	56	61	66	70
	10' Ceilings	6	6	6	8	9	11	12	15	18	21	24	27	30	33	36	39	42	45
	12" Ceilings	5	5	4	5	6	7	8	10	13	15	17	19	21	23	25	27	29	31
130	8' Ceilings	8	8	10	13	15	18	20	26	31	36	41	46	51	56	61	66	72	78
	10' Ceilings	7	7	7	8	10	11	13	16	20	23	26	29	33	36	39	42	46	49
	12" Ceilings	5	5	5	6	7	8	9	11	14	16	18	20	23	25	27	30	32	34
140	8' Ceilings	9	9	11	14	17	20	22	28	33	39	44	49	55	60	66	72	77	82
	10' Ceilings	7	7	7	9	11	12	14	18	21	25	28	32	35	39	42	46	49	53
	12" Ceilings	6	6	5	6	7	9	10	12	15	17	19	22	24	27	29	32	34	37
150	8' Ceilings	9	9	12	15	18	21	24	29	35	41	47	53	59	65	70	76	82	88
	10' Ceilings	8	8	8	9	11	13	15	19	23	26	30	34	38	41	45	49	53	56
	12" Ceilings	6	6	5	7	8	9	10	13	16	18	21	23	26	29	31	34	37	39

# Commercial Audio Guide

Once the proper quantities of speakers are determined, they should be set in the ceiling with an alternating pattern as shown in Diagram 2:

Diagram 2: Ceiling Speaker Layout on Ceiling



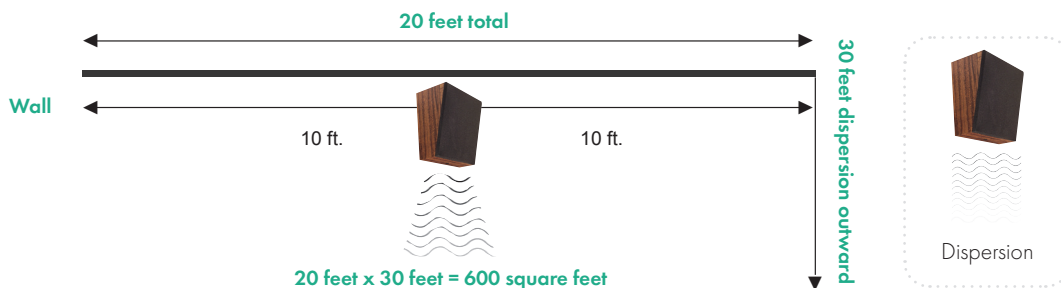
## Determining Proper Quantity of Wall Baffle Speakers:

The amount of Wall Baffle Speakers needed for an installation is calculated by taking the square footage of the area that needs coverage and dividing it by 600 square feet:

$$\text{Area of Square Footage Required} \div \text{Divided by \%} \text{ 600 Square Feet} = \text{Number of Wall Baffle Speakers Required}$$

600 ft. is an average estimate and is arrived at, by taking the usual side sound disperement of a wall baffle speaker, (10 ft. to each side) while taking into consideration the usual sound projection outward (30 ft. outward) as detailed by Diagram 3:

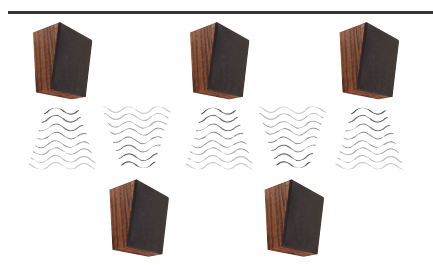
Diagram 3: Wall Baffle Speaker Disperement View from Ceiling



Wall Baffle Speakers should, whenever possible, be pointed in the same direction. It is very important that wall baffle speakers should not be positioned directly across from each other on opposing walls when covering a large area of space as shown in Diagram 4:

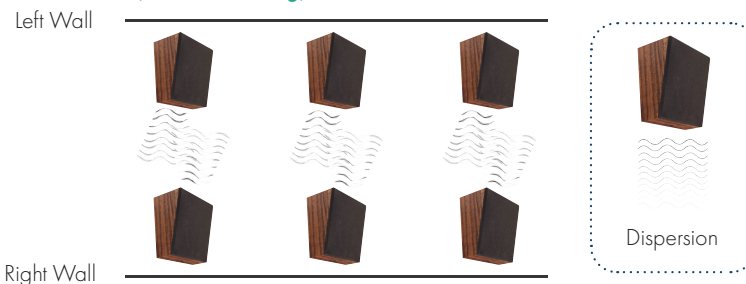
Diagram 4: Correct and Inorrect Placement of Wall Baffle Speakers

### A) Correct Wall Baffle Speaker Placement (view from ceiling)



In scenario A there is proper dispersion and correct alignment.

### B) Wrong Wall Baffle Speaker Placement (view from ceiling)



In scenario B there is an overlap of sound dispersion and distortion.



# Commercial Audio Guide

## Determining Proper Quantity Use For P.A. Horn Speakers:

The correct number of P.A. Horn Speakers can be determined by cross-referencing the square footage requirement and the type of noise environment. See chart below.

			Desired Square Footage of Coverage (in thousands)																											
Environment	dB Class	Example	1	2	5	10	15	20	25	30	35	40	45	50	55	60	65	70	75	80	85	90	95	100	125	150	200	225	250	300
Quiet Areas	<70 dB	Restaurant Department Store	1	1	1	3	4	5	6	8	9	10	11	13	14	15	16	18	19	20	21	23	24	25	31	38	50	56	63	75
Noisy Areas	71-85 dB	Factory Assembly Line	1	1	2	4	6	8	10	12	14	16	18	20	22	24	26	28	30	32	34	36	38	40	50	60	80	90	100	120
Extremely Noisy Areas	>85 dB	Printing Press Metal Shop	1	2	4	8	13	17	21	25	29	33	38	42	46	50	54	58	63	67	71	75	79	83	104	125	167	188	208	250

P.A. Horns should be placed at a height of 15 feet and positioned at a 60 degree angle towards the ground. P.A. Horns should NEVER be positioned facing each other. When multiple P.A. Horns are needed in a line, what is known as a "diamond pattern" should be used as shown in Diagram 5:

Diagram 5: Proper Placement of P.A. Horns in "Diamond Pattern"



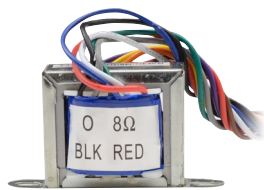
## What Is The Purpose of a 70V Transformer on a Speaker?

A 70V transformer protects the speaker and only allows a certain wattage to pass through the transformer to activate the speaker depending on the sound requirement. The higher the wattage tap is set or wired, the louder the speaker will be. In addition, this transformer based system is current efficient by protecting the system from getting overheated from wasted power. Finally, a 70V transformer based system only requires the installer to make a quick calculation to obtain the required wattage needed for the system. Each speaker in the system is individually set at a certain tap. The wattage calculation requires adding all the tap requirements and then adding an increase of 20% as a safety buffer.

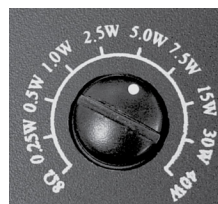
## How Do I Wire a 70V Speaker?

Wiring a speaker with a 70 Volt transformer involves finding the correct colored wire extending from the transformer that corresponds with the desired wattage tap. Each colored wire's individual wattage tap should be marked on the transformer. Once the proper wire is found, connect it to the positive wire running from the amplifier. Then find the common wire extending from the transformer, usually black, and connect it with a wire running back towards the amplifier.

Some speakers have a transformer dial for selecting a desired wattage. This makes setup very easy by already providing one positive wire and one common wire for connections. All that's needed is to simply turn the transformer dial to the desired watt setting.



70V Transformer (T70255)



Transformer Dial

# Commercial Audio Guide

## Which Wattage Tap Should I Set My Horn or Speaker To?

The chart to the right shows a basic guideline for wattage tap setting. This is simply for general reference. Each job must be looked at individually as there are many factors that go into determining the best wattage tap settings.

Noise Level	Decibel	Environment	Wattage Tap *
Low	55dB-64dB	Corporate Office	0.25-2.5
		Doctor's Office	0.5
		Classroom	0.5-5
		Convenience Store	1
		Department Store	1-2.5
Medium	65dB-74dB	Restaurant	2
		Warehouse	2-10
		Hospital	2-5
		Supermarket	2-5
High	75dB-84dB	Bar	5-20
		Factory	7.5-40
		Assembly Line	15-50
Maximum	85dB+	Printing Press	30+
		Metal Shop	40+

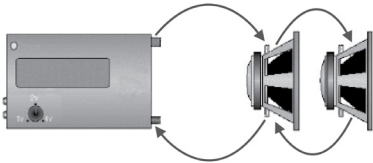
\*taps vary depending on ceiling height and ambient noise

## How Do I Wire a Commercial Run of Speakers?

Commercial Speakers should be wired in a "PARALLEL RUN", meaning the positive outbound connection of the amplifier or receiver should run to the positive terminal of the first speaker. Then from that positive terminal the wiring should proceed to the next speaker's positive terminal as detailed in Diagram 5 below. The return wiring from each common terminal goes to the next speaker on the return run's common terminal and finishes at the amplifier/receiver.

### Diagram 6: Wiring Speakers in Parallel

Large runs with many speakers should be broken down into several smaller runs coming from the amplifier. If one speaker stops working it is easier to locate the problem if shorter runs are used instead of one continuous run.



## What Wire Should I Use?

Generally, speaker wire is determined by the length of the run and the wattage utilized:

- Wire runs less than 50 feet and utilizing 50 Watts of power or less use 16 gauge wire.
- Wire runs more than 50 feet and/or over 50 Watts of power use 14 gauge wire.

When selecting your wire and line loss for length of speaker run, other specifications to consider are: UL Listing, Plenum Rating, weatherproofing, etc.

Speco Technologies has provided this information as an educational introduction to commercial sound systems.

Speco Technologies assumes no liability for any information within this guide section and/or any action that is taken based on the information contained here. Please consult licensed professionals when performing commercial sound installations.

## Multizone Audio Streaming

Speco technologies now offers two units that enable multiroom audio streaming. The AA1 is an amplifier with a built-in streamer, while the AS1 is a streamer only.

### AA1

This unit has two 8 Ohms outputs, and is intended to be a zone in small rooms such as offices, tanning rooms, examination rooms, classrooms, etc. You can wire one 8 Ohms speaker of up to 80W max to each output.

(Pic of AA1 showing two speakers coming out such as below)



### AS1

This unit does not have an amplifier, and needs to be connected to an amplifier in order to provide the streaming ability. This can be done by utilizing the included RCA cable and connecting it to the Auxiliary input on most amplifiers.



# Audio Product Warranties



## AMPLIFIERS

These products are warranted against manufacturing defects in material and workmanship for **five (5) years** including parts and labor.



## INDOOR SPEAKERS

These products are warranted against manufacturing defects in material and workmanship for the **lifetime** of the product, including parts and labor.



## OUTDOOR SPEAKERS

These products are warranted against manufacturing defects in material and workmanship for **five (5) years** including parts and labor.



## P.A. HORNS, MICROPHONES & VOLUME CONTROLS

These products are warranted against manufacturing defects in material and workmanship for **two (2) years** from date of purchase including parts and labor.



## MEGAPHONES

These products are warranted against manufacturing defects in material and workmanship for **one (1) year** including parts and labor.



## OTHER AUDIO ITEMS NOT COVERED ABOVE:

These products are warranted against manufacturing defects in material and workmanship for one (1) year including parts and labor.

We warranty all products to be free from any manufacturing or material defects. This warranty will not extend to any products which have been subjected to misuse, neglect, accident, or improper installation, used in violation of instructions furnished by us; or to units which have been repaired or altered outside of the factory. This limited warranty does not apply to broken cases, batteries, or other physically damaged parts. Upon request by the customer, the company will at the customer's expense repackage merchandise in new cartons, replace missing accessories, and return in resalable condition. Unless requested, the company will replace and return all merchandise in the packaging in which it was received. This warranty is in lieu of all expressed warranties, expressed or implied, and of all obligations or liability on our part, and we neither assume nor authorize any representative or other person to assume for us any obligation or liability. In no event shall we be liable for incidental or consequential damages arising from the use of the product, or for any delay in the use of this product do to causes beyond our control. Some states do not allow limitations of how long an implied warranty lasts and/or do not allow the exclusion or limitation of consequential damages. The above limitations on implied warranty and consequential damages may not apply to you. This warranty gives you specific legal rights. You may have other rights which vary from state to state. See actual warranty statement included with product for limitations and exclusions where applicable. This limited warranty extends to products listed in the company's current price schedule.

## RETURNS

A written return authorization must be obtained prior to shipment. Label(s) must appear on all packages and return must be ship prepaid. Defective in-warranty products will be returned prepaid. Defective out-of-warranty products will be repaired at a nominal charge for parts and labor and returned with shipping charges added to the invoice. If you require an estimate before repair, please request.

## RETURNED GOODS POLICY

1. RETURNS SENT WITHOUT PRIOR APPROVAL WILL NOT BE ACCEPTED. CREDIT WILL BE ISSUED UPON INSPECTION OF RETURNED UNITS.
2. No discounted item may be returned for credit or exchange.
3. An order of \$3.00 for every \$1.00 to be returned must accompany a request for return for stock adjustment.
4. There will be a minimum charge of 15% for handling and repacking where necessary. Merchandise returned for credit or exchange with missing or damaged packaging or accessories will be charged accordingly. Merchandise returned for repair will be shipped back repaired but in the same physical condition as when received by us. If repacking or refurbishing is requested, where possible, you will be charged accordingly.
5. If a credit is issued, current best quantity price or price when purchased, whichever is lower, will prevail.

# Audio Glossary

**Amp:** The unit of measure used with an electric current.

**Amplifier:** An electronic component or device that takes low-level signals and recreates the signal with more power.

**Baffle:** A box-like structure that a speaker is placed into to enhance the bass sound of the speaker.

**Bass:** The lowest audible existing frequency range usually below 200Hz.

**Bookshelf Speaker:** A small speaker which is designed to sit on a bookshelf or shelf.

**Capacitors:** Electrical devices that store charges.

**Coaxial Speaker:** A type of speaker driver where the high frequency driver (the tweeter) is located inside a low or mid-frequency driver (the woofer).

**Crossover:** A component that splits up the frequency depending on ranges and directs them to certain drivers.

**Current:** The flow of electricity through a circuit as measured in amps.

**dB Decibel:** A logarithmic scale measuring the intensity of the sound pressure level of a noise.

**Driver:** The cone-like component of a speaker that pushes back and forth to sound waves.

**Floor Standing Speaker:** A specific type of speaker enclosure with an acceptable level of sound height that stands directly on the floor.

**Frequency:** The number of repeating sound cycles in a given period, measured in hertz or kilohertz. Human hearing is usually 20Hz to 20kHz with the lower frequencies representing the bass and higher

representing the treble.

**Grille:** An aesthetic front plate covering for speakers.

**Horn:** An element used to increase sound efficiency by placing the driver at the end of a megaphone-like structure.

**Hz (Hertz):** Number of cycles per second of sound waves used to measure frequency.

**Impedance:** The resistance to the flow of an electrical current as measured in Ohms.

**kHz (kilohertz):** One thousand sound cycles per second.

**Magnet:** A component of a speaker that uses electromagnets to create movement of the driver reproducing sound.

**Microphone:** A device used to create an electrical signal representative of the sound striking it to be heard over speakers.

**Midrange:** The middle band of audio frequencies between 150/200Hz to between 1,000/2,000Hz.

**Music-on-hold Feature:** An amplifier output feature which allows callers on a phone system that are holding to hear music or supplied dialog.

**Ohm:** A measure of resistance in a circuit to an electric current.

**Outdoor Speaker:** A speaker that is weather-resistant.

**Power Rating:** The maximum amount of power in watts that an amplifier can put out or a speaker can be driven with.

**RMS (root mean square):** The average continuous power output an amplifier is capable of producing or a speaker is capable of receiving.

**Sensitivity or SPL:** A measure of the sound pressure level measured from a distance of one meter from a speaker when the speaker receives a 2.83-volt signal - 1 watt at 8 ohm.

**Three-way Speaker:** A speaker system containing three individual drivers covering three frequency bands.

**Transformer:** An important component of the power supply that pulls electricity from a source and then transforms it into power that can be used in electronic devices.

**Tweeter:** A speaker driver designed for receiving high frequencies usually above 2,000Hz.

**Two-way Speaker:** A speaker system with two individual drivers covering two frequency bands.

**Voice Coil:** A tightly wrapped coil of wire attached to a speaker driver's diaphragm and located near the stationary magnet.

**Watt:** A measurement of power obtained by multiplying current by voltage.

**Woofer:** A speaker driver that handles low frequency signals.

**XLR Connector:** A plug connector usually at the end of a microphone wire that allows easy connection to an amplifier without the need to strip the wire to connect it to screw terminals.



# Product Number Index

2WAK2..... 57  
 2WAK3..... 57  
 2WAK4..... 57

## A

AA1..... 6, 72  
 AAC EK1B..... 6  
 AAC EK1W..... 6  
 AES4 ..... 41  
 AS1..... 6, 72  
 ASPBMK1..... 6  
 ASPC20 ..... 58

## B

BRC5 ..... 66  
 BRC6 ..... 66  
 BRC6E..... 66  
 BRC6F..... 66  
 BRC8 ..... 66  
 BRC8F..... 66

## C

CAMMIC ..... 49  
 CAMMIC2 ..... 49  
 CAMMICV ..... 49  
 CAMMICW..... 49  
 CBS240 ..... 42  
 CBS4 ..... 41

## D

DDAK4 ..... 57  
 DDK2..... 57  
 DDK3..... 57  
 DM520P ..... 44  
 DMS3TS..... 40  
 DMS3TSW ..... 40

## E

ER370..... 19  
 ER370B..... 19  
 ER390UMB ..... 20

## G

G46TG..... 28  
 G86TCG ..... 28  
 G86TG..... 23, 28  
 G86TG1X2..... 30  
 G86TG2X2..... 30  
 G86TG2X2C ..... 30

## H

HD2SPL2..... 48  
 HD4MAT..... 48  
 HD4SPL2..... 48  
 HDCL25 ..... 45  
 HDCL50 ..... 47  
 HDF2FCP ..... 47  
 HDVL10 ..... 47  
 HDVL15..... 47  
 HDVL3 ..... 47  
 HDVL6 ..... 47  
 HDXTNDR ..... 48

## I

IMP100DLWH..... 66  
 IMP80D ..... 66

## M

MCA10..... 45  
 MCA20..... 45  
 MCDT300A..... 45  
 MCHH100A ..... 44  
 MGS1 ..... 44  
 MGS1C..... 44  
 MHL5S..... 45  
 MSA1 ..... 45  
 MUHF101 ..... 43  
 MUHFHH ..... 43  
 MUHFLP ..... 43

## P

P500A ..... 13, 21  
 P60FACD ..... 11, 21  
 PAT20TB..... 18, 21  
 PBM120A..... 8, 21  
 PBM120AT ..... 8, 21  
 PBM120AU ..... 8, 21  
 PBM240A ..... 8, 21  
 PBM240AT ..... 8, 21  
 PBM240AU ..... 8, 21  
 PBM30..... 15, 21  
 PBM60A ..... 8, 21  
 PBM60AT ..... 8, 21  
 PBM60AU ..... 8, 21  
 PL200M ..... 12, 21  
 PL260A..... 14, 21  
 PMM120A ..... 14, 15, 21  
 PMM60A ..... 14, 15, 21  
 PSR4C..... 46  
 PVL15A..... 17, 21

## S

SA15RP..... 56  
 SA4P..... 56  
 SA5P..... 56  
 SFA12 ..... 46  
 SFR12 ..... 46  
 SP30PT..... 34  
 SP30PTB..... 34  
 SP4AWET..... 38  
 SP4AWETW ..... 38  
 SP525C..... 64  
 SP5MAT ..... 26  
 SP5MATB ..... 26  
 SP6OCT ..... 25  
 SP6ECS..... 63  
 SP6MAT ..... 23, 26  
 SP6MATB ..... 26  
 SP6MAWT ..... 26  
 SP6NXCTUL..... 23, 24  
 SP6PMNTB..... 35  
 SP6PTW ..... 35  
 SPC10..... 51  
 SPC104..... 51  
 SPC10RT ..... 53  
 SPC10T ..... 52  
 SPC12RP ..... 54  
 SPC15 ..... 51  
 SPC15R..... 54  
 SPC15RP ..... 54  
 SPC15RT ..... 53  
 SPC15T ..... 52  
 SPC30RT ..... 53  
 SPC30T ..... 52  
 SPC40RP ..... 55  
 SPC40RT ..... 55  
 SPC5P..... 50  
 SPC6P..... 50  
 SPC8..... 50  
 SPCBC5 ..... 61  
 SPCBC6 ..... 61  
 SPCDC6 ..... 62  
 SPCE5OB..... 65  
 SPCE5OTW ..... 39  
 SPCE5OW..... 65  
 SPCE6OB..... 65  
 SPCE6OTB..... 39  
 SPCE6OTW ..... 39  
 SPCE6OW..... 65  
 SPCE8OTB..... 39  
 SPCE8OTW ..... 39  
 SPCT8T ..... 33  
 SPG66T..... 29  
 SPG66TC ..... 29

SPG6MT ..... 27  
 SPG86T..... 29  
 SPG86TC ..... 29  
 SPIPC6A..... 4, 22  
 SPIPC6AM..... 4, 22  
 SPIPC8A..... 4, 22  
 SPIPC8AM..... 4, 22  
 SPIPC9AM..... 4, 22  
 SPP20T..... 36  
 SPRK65CBT ..... 37  
 SPRK65CGT ..... 37  
 SRD100..... 56  
 SRD80T..... 56  
 SRH2O ..... 56  
 STH8..... 28

## T

T2510 ..... 46  
 T7010 ..... 46  
 T7020 ..... 46  
 T70255 ..... 46  
 TS8 ..... 28

## U

UTPAUDIO ..... 49

## V

VG AHD2..... 48

## W

WAT10..... 59  
 WAT10DW ..... 59  
 WAT50 ..... 59  
 WAT50DW ..... 59  
 WAT100D ..... 59  
 WB86T..... 23, 32  
 WBM6T..... 31  
 WBM6TA ..... 31



follow us on social media

# DESIGNING A LARGE PROJECT FOR VIDEO SURVEILLANCE?

Speco's S.E.A.L. Team of surveillance professionals are here to assist!

- 1 Speco's Sales, Engineering, and Leadership Team made up of certified surveillance and audio experts is eager to help, **FREE** of charge!
- 2 Host live demos and webinars to show you how to get the most out of your Speco solutions!
- 3 Integrate custom surveillance access control, and commercial audio applications that fit **YOUR** needs!
- 4 Gain access to this exclusive complimentary service when you purchase Speco Products!



## MEET THE TEAM LEADERS!



Justin  
Taylor



Timothy  
O'Brien



Phil  
Benanti

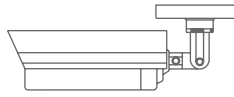
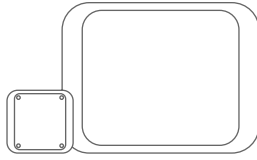
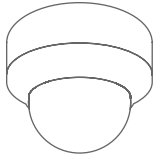


Click or scan  
QR code to  
watch video

For more info visit us at [specotech.com](http://specotech.com) or call 1.800.645.5516

# WANT MORE?

visit [www.specotech.com](http://www.specotech.com) to learn more about our products



Speco Technologies has always been an innovator in providing the best possible Audio solutions to our customers. In today's competitive audio market, most companies don't survive without a strong commitment to their customers, and the constant introduction of innovative, quality products at a superior price. It's those very principles that Speco Technologies was founded on, and more than 60 years later, will continue to follow these same principles to make sure our customers know we care.



**speco**  
technologies

Contact us at  
1.800.645.5516 or  
[orders@specotech.com](mailto:orders@specotech.com)

