

Enjoy High Voice quality IP Phone, iPECS LIP-9000 Series

Enjoy a wide selection of easy to use system IP phones to enrich your communications experience with a powerful speaker phone and wideband voice support.

LIP-9040/C Advanced

Suitable User

- Managers, general offices and remote workers

Key Features

- 12(3 pages, total 36) flexible buttons
- Wide gray scale/color graphic type 8 line LCD with backlit



LIP-9030 Professional

Suitable User

- Managers, general offices and remote workers

Key Features

- 8(3 pages, total 24) flexible buttons
- Wide gray scale graphic type 6 line LCD with backlit
- Full duplex Speakerphone, Gigabit Connection.



LIP-9020 Administrator

Suitable User

- General offices and remote workers

Key Features

- 10 flexible buttons
- Wide gray scale graphic type 4 line LCD with backlit
- Full duplex Speakerphone, Gigabit Connection.



LIP-9008G Office

Suitable User

- Small offices, remote workers and receptionists

Key Features

- 8 flexible buttons
- Wide gray scale graphic type 3 line LCD with backlit
- Full Duplex Speakerphone, HD, Gigabit Connection.



LIP-9008 Featured Entry

Suitable User

- Reception lobbies and small offices

Key Features

- 8 flexible buttons
- Featured entry model with high quality voice
- 10/100 Connection, Full Duplex Speakerphone.



LIP-9002 Entry

Suitable User

- Reception lobbies and meeting areas
- Manufacturing and retail floors

Key Features

- 4 flexible buttons
- Affordable large deployment with wideband voice



ACCESSORY

LIP-9012DSS

- 12 keys with triple color LED
- Paper underlay
- Power via keyset



LIP-9024DSS

- 24 keys with triple color LED
- Paper underlay
- Power via keyset



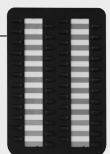
LIP-9024LSS

- 12 keys and 2 pages button with triple color LED
- LCD underlay
- Power via keyset



LIP-9048DSS

- 48 keys with triple color LED
- Paper underlay
- Power via PoE or Adaptor



EHSA

(Electronic Hook Switch Adapter)

- Compatible with Plantronics and Jabra
- Package of EHSA& foot stand



Bluetooth Module (LIP-9000BTMU)

- Bluetooth V2.1+EDR
- Speaker phone or handset calls on smart phone and headset



Specification

		LIP-9002	LIP-9008	LIP-9008G	LIP-9010	LIP-9020	LIP-9030	LIP-9040	LIP-9040C	
Display	LCD size(Pixels)	128 x 32	128 x 64		320 x 48	320 x 80	320 x 112	320 x 144	480 x 272	
	UI line	2 line	4 line		3 line	4 line	6 line	8 line	8 line	
	Backlit	No			Yes					
	LCD type	Black and white			Gray scale graphic				Color graphic	
Keypad	Soft key	No	Yes(3)		No	Yes(3)				
	Navigation key	No			Yes					
	Programmable button with 3 color LED	Yes(4)	Yes(8)		Yes(5)	Yes(10)	Yes(24)	Yes(36)		
	Fixed button (Dedicated hard key)	Yes (10 buttons)	Yes (11 buttons)		Yes (12 buttons)					
Network Interfaces	Ethernet (IEEE 802.3/1 Gigabit)	Yes(2 port 10/100 Base-T)		Yes(2 port 10/100/1000 Base-T)	Yes(2 port 10/100 Base-T)	Yes(2 port 10/100/1000 Base-T)				
Speaker		Yes(Half duplex)	Yes(Full duplex)							
Audio Interfaces	Handset(RJ-9)	Yes								
	Headset(RJ-9)	Yes								
XML*		No	Yes							
BLF		Yes								
Audio	Codec	G.711, 729AB, 722								
	Protocol	Ericsson-LG Enterprise iPECS Protocol								
	Features	Acoustic Echo Canceller, Voice Active Detection, Hearing Aid Compatible								
Network	IP address	Static/DHCP								
	LLDP-MED, VLAN	Yes								
	QoS	Dynamic jitter buffering, 802.1p/Q, Layer 3 TOS, DiffServ								
Security	Standard	SRTP with AES-128, 802.1x/EAP-MD5(EAPOL), Password login								
	VPN(OpenVPN)	Yes								
Management	Auto/Remote upgrade	Yes								
	Web management	Yes								
Power	Local	Yes(48V, 0.3A)								
	PoE(802.3af)	Yes(Class 1)				Yes(Class 2)				
	Power consumption (Active/Standby, Watt)	1.93/1.80	1.95/1.83		1.93/1.80	2.45/2.05	2.52/2.10	2.75/2.35	3.20/2.50	
H/W Spec.	Dimension(H x W x D, mm)	229 x 195 x 108	229 x 200 x 126		229 x 214 x 126		229 x 229 x 126			
	Weight(Net, g)	810	865		925	970		1020		
Accessory	DSS/LSS	No			Yes(LIP-9012DSS/24DSS/24LSS/48DSS)					
	EHSA	No	Yes(External EHSA)							
	Bluetooth	No			Yes(LIP-9000BTMU)					
Others	Phone tilting	No	Yes(2 Level bracket)							
	Wall mount	Yes(Optional)								
Major features	Speed dialing, Redialing, Call holding, Call waiting, Call park/Call pick up, Call forwarding, Conference call, Volume up/down control, Caller ID, Distinctive ring/Multi-ring, Multi-lines, Direct mail/Messaging access, Directory/Phone book and full system features									

* XML : XML is supported in case of iPECS-CM SIP only

DSS/LSS Option

Model	LIP-9012DSS	LIP-9024DSS	LIP-9024LSS	LIP-9048DSS
Compatibility	LIP-9020/30/40/40C			
Flexible button	12	24	12(2 pages, total 24)	48
Underlay type	Paper	Paper	LCD	Paper
Maximum connection	1			SIP : 2 / IPKTS* : 4
Triple color LED	Yes			
External power	No			Yes

* IPKTS : 4 connection is supported only in following conditions. (System - Unified 2.1 or higher, IP Phone - 1.0Fh version or higher, DSS - ECO B20160177)

EHSA(Electronic Hook Switch Adaptor)

EHSA is a set of cables connect between wireless or wired headset and desk phones. It enables customers to answer and end calls away from their desks.

Benefits

- Support wired and wireless devices
- Common use in digital and IP phones
- Stable operation and better quality

Specifications

- CPU : CortexM0
- Power : From phone(5V, 3.3V)
- Phone communication : DSS port 14 pin
- EHSA selection : Auto detection
- Protocol : SIP/IPKTS
- Compatible Model : Plantronics CS500 Series, SAVI 700 Series
Jabra Pro 920 Series, Pro 9400 Series

The content of this document is subject to revision without notice due to continued progress in methodology, design and manufacturing. Ericsson-LG Enterprise shall have no liability for any error or damage of any kind resulting from the use of this document

© Ericsson-LG Enterprise Co., Ltd. 2017 Ver. 3.0

Ericsson-LG Enterprise Co., Ltd.
(431-749) 77, Heungan-daero 81 beon-gil, Dongan-gu, Anyang-si, Gyeonggi-do, South Korea
www.ericssonlg-enterprise.com | www.iPECS.com | www.iPECS-Cloud.com

iPECS is an Ericsson-LG Brand

