

MX-E



Advanced "All-in-One" IP Phone System Solutions for all Your Business Needs

Manage Your Phone System Your Way

The Zultys MX-E is an enterprise-class IP phone system that includes a PSTN and SIP gateway right out of the box. Innovative, reliable and scalable, the MX-E systems integrates voice, video, and are loaded with business-enhancing features such as Unified Communications, Integrated Fax, Voice Mail, Contact Center, Presence, Instant Messaging, Zultys Mobile Communicator™, Integrated MXconference™ Audio Conferencing and more, to optimize collaboration and communications for businesses of all sizes. To further expand the capacity of the enterprise's communication solution, MX-E can be integrated into a company-wide MXnetwork™ that may include any combination of appliances that allow you to scale up to 128 different locations with 10,000 employees into an enterprise-wide Unified Communications system.

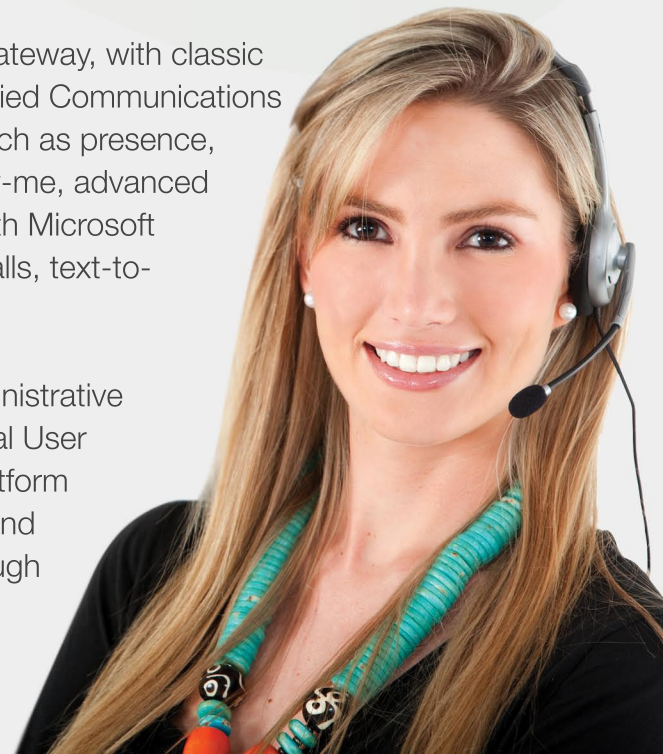
The MX-E IP phone system delivers enterprise class IP telephony services that support high quality VoIP and Unified Communications services. MX-E is available in three different models; the base MX-E model supports 300 users, while the MX-E+ can support up to 1000 users, and the MX-E++ is designed to accommodate businesses with up to 2000 users on a single appliance.

All-in-One Appliance Does Everything You Need

MX-E unifies coworkers inside the organization—if they are on the road and using their mobile device, working from home using their laptop's built-in speakers, or if they are in the office—regardless of their physical location, employees can communicate between themselves and with customers while maintaining access to all the system features and retaining their own personal user identity.

Zultys IP phone system combines the functions of an Internet gateway, with classic phone system functionality for high quality voice calling and Unified Communications across an organization. MX-E provides powerful applications such as presence, instant messaging, fax server, unified messaging, find-me/follow-me, advanced call handling, screen pops, and detailed call logs. It integrate with Microsoft Exchange and also supports contact center, ACD, IVR, video calls, text-to-speech announcements, call recording, and Voice Mail.

The system is easily managed and maintained through the administrative console, referred to as MX Administrator™, an intuitive Graphical User Interface that can configure and monitor every aspect of the platform securely and remotely over LANs or WANs. You can configure and manage multiple systems at the same time from anywhere through one MX Administrator console.



Unmatched Reliability

MX-E is ready for continuous heavy usage by any size corporation, with a major focus on reliability within the design. It features redundancy for major components such as power supplies, cooling fans and storage drives. MX-E boasts dual redundant hot-swappable power supplies. The system comes equipped with a total of four drives. Three drives are used in “RAID 1 + one spare” configuration providing customers with peace of mind. In case any RAID drive fails, RAID is rebuilt with the spare drive. Similarly to the power supplies, the drives are hot-swappable. Each MX-E also includes three cooling fans. The fans can adjust speed to remove excessive heat if the unit begins to run too warm. For improved reliability, the system is designed to be fully operational within an acceptable temperature range with only two working fans out of three.

Besides the hardware-level reliability functionality, Zultys' Unified Communication software comes pre-packaged with features that ensure that your phone system will remain operational in any circumstances. Disaster recovery options allow customers to have a remote MX system configured as part of an MXnetwork for the company to take over functionality of other MX systems; so even if the corporate office suffers from a full power-outage due to a natural disaster, employees can still communicate with customers through the corporate phone system.

Scale Seamlessly as Your Company's Needs Grow

Zultys MX-E IP phone system seamlessly scales up to meet a company's growing communications needs, often without ever requiring any additional hardware. You can expand to meet your needs by upgrading user licenses, or you can deploy additional MX systems. The Zultys MXnetwork™ feature enables multiple IP phone systems to be connected in a peer-to-peer architecture to provide organization-wide Unified Communications across 128 different locations for up to 10,000 users. Our distributed platform enables survivability, high availability and disaster recovery over multiple locations.

Work **Anywhere**. Work **Everywhere**.™



INNOVATE | COMMUNICATE | COLLABORATE

Available Features	MX-E	MX-E+	MX-E++
User Capacity	300 Users	1000 Users	2000 Users
Free SIP trunk support	Yes	Yes	Yes
Maximum SIP trunks (can also be split with Analog+PCM)	300	1000	2000
Number of available extension slots Can accommodate the following: Single T1/PRI/E1, Dual T1/PRI/E1, FXO 8, FXO 4, FXS 8, FXS 4	3	3	3
Complete IP phone system functionality	Yes	Yes	Yes
Hard-disk mirroring	RAID-1	RAID-1	RAID-1
Redundancy and Disaster Recovery	Yes	Yes	Yes
Multiple Languages & Dialects	26	26	26
Support for Windows, Apple and Linux operating systems	Yes	Yes	Yes
Seamless Scalability via MXnetwork™	5-10 000 Users at 128 Locations	5-10 000 Users at 128 Locations	5-10 000 Users at 128 Locations
Integrated Voice Mail	1200 Hours	4000 Hours	8000 Hours
Fax Server: Termination Origination & Storage	Yes	Yes	Yes
MXIE™ Unified Communications Client	Yes	Yes	Yes
Presence Instant Messaging & Chat	Yes	Yes	Yes
MXconnect™ (use with any phone) and Softphone	Yes	Yes	Yes
Least-Cost Call Routing	Yes	Yes	Yes
Find Me / Follow Me & Simultaneous Ring	17 Destinations	17 Destinations	17 Destinations
Call Recording – Automatic and On Demand	Yes	Yes	Yes
Zultys Mobile Communicator™ Unified Communications option for mobile phones	Yes	Yes	Yes
Integrated Contact Center/Contact Center support	Yes	Yes	Yes
Multiple ACDs Hunt Groups and Operator Groups	100	256	400
Support for TAPI SIP V.2 & CSTA	Yes	Yes	Yes
MXconference™ integrated audio conferencing feature	Yes	Yes	Yes
Archiving – Call Recording / Voice Mail / IM / Fax	Yes	Yes	Yes
Multiple Automated Attendants	100	256	400
MXreport Call Detail Reports and Call Attached Data	Yes	Yes	Yes
Paging Groups	100	256	300





MX-E

Physical and Environmental

- Operating temp: 10°C to 40°C (50°F to 104°F)
- Storage temp: 0°C to 50°C (32°F to 122°F)
- Weight: 15.9 kg (35 lb). Shipping weight 18.1 kg (40 lb)
- Size: 457.2 mm (W) x 260.35 mm (D) x 88.9 mm (H) (18" x 10'25" x 3'5")
- Power Consumption (Max): 300 Watts
- Power Requirement: 100-240V AC
- Power Supply: Dual hot swappable
- Mount: Standard 19" rack
- Certification: Safety UL, FCC, CE and Telecom
- LCD Display with 4 navigation buttons
- 2 USB ports (support for APC UPS graceful shutdown)
- Dual GigaBit Ethernet ports
- 3 hot swappable hard disk drives (2 configured in RAID-1, plus 1 spare)

TARGET
DISTRIBUTING

19560 Amaranth Drive • Germantown, MD 20874
tgsales@targetdist.com • www.targetd.com

800-873-5528

The Target Distributing logo features a stylized orange and white 'G' icon to the left of the word 'TARGET' in a bold, black, sans-serif font. Below 'TARGET' is the word 'DISTRIBUTING' in a smaller, bold, black, sans-serif font. The contact information is presented in a clean, black, sans-serif font.

Zultys, Inc. / 785 Lucerne Drive / Sunnyvale, CA 94085 USA

Zultys, Inc., the Zultys logo, the Zultys mark, MX-E, MXnetwork and Zultys Mobile Communicator are trademarks or registered trademarks of Zultys, Inc. All other trademarks used herein are the property of their respective owners. ©2016 Zultys, Inc. All rights reserved. 96-35312-00