

SIP Outdoor RGB (Multi-Color) Strobe

The wall-mounted SIP Outdoor RGB (Multi-Color) Strobe operates as an IP65 rated visual alerting device. The Outdoor Strobe can be set up as part of a ring group or page group to give visual notification of incoming calls or pages.

The Outdoor Strobe may also be activated by being part of a multicast group. The Strobe can be configured with up to 10 multicast addresses and is activated when a stream is sent to its address.

You can have the Strobe respond to message waiting signals by blinking. When the message has been heard, the Strobe stops blinking.

Multiple colors, blink rate and brightness can be selected for each of the different activation methods. There are 10 multicast settings and two SIP extensions.

Users may also use CyberData's HTTP command set to directly access the Strobe's functions.

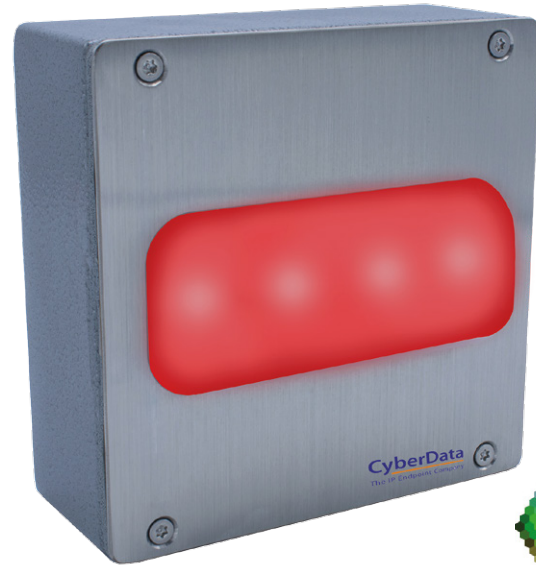
CyberData has maintained one of the most comprehensive lists of IP PBX servers certified to work with CyberData VoIP Products.

Features

- Meets ADA requirements for telephony signaling and notification
- TLS 1.2, enhanced security for IP Endpoints in a local or cloud-based environment
- Cisco SRST support
- Event-controlled relay
- Tamper sensor
- Web-based setup

Use areas include:

- Shipping and receiving areas
- Parking garages and parking lots
- Playgrounds
- Places of Refuge
- Anyplace needing an IP rated outdoor visual alert



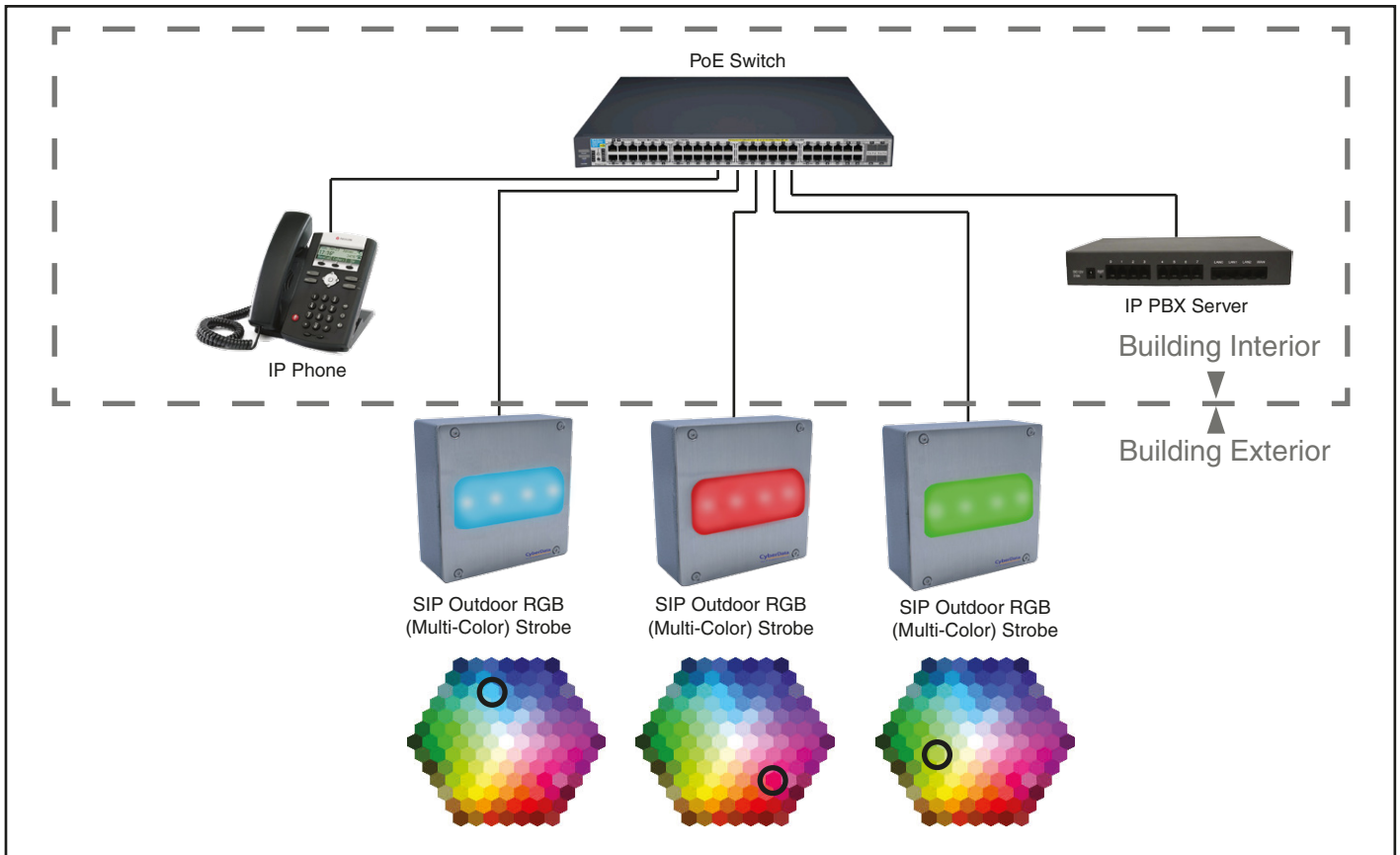
Specifications

Ethernet I/F	10/100 Mbps
Protocol	SIP RFC 3261 Compatible
Power Input	PoE 802.3af compliant or +8 to +12VDC @ 1000mA Regulated Power Supply (not included)
Flash rate	5 user-defined scenes
LED MTBF	100,000 Hours
On-Board Relay	1A @ 30 VDC
Network Security	TLS/SSL 1.2
IP Rating	IP65
Operating Range	Temperature: -40° C to 55° C (-40° F to 131° F) Humidity: 5-95%, non-condensing
Storage Temperature	-40° C to 70° C (-40° F to 158° F)
Storage Altitude	Up to 15,000 ft. (4573 m)
Dimensions*	5.1 inches [129.5 mm] Length 2.9 inches [73.66 mm] Width 5.1 inches [129.5 mm] Height
Weight	2.0 lbs [0.90 kg]
Boxed Weight	3.0 lbs [1.35 kg]
Compliance	CE; EMC Directive – Class A EN 55032 & EN 55024, LV Safety Directive – EN 60950-1, RoHS Compliant, FCC; Part 15 Class A, Industry Canada; ICES-3 Class A, IEEE 802.3 Compliant
Warranty	2 Years Limited
Part Number	011479

*Dimensions are measured from the perspective of the product being upright with the front of the product facing you.

SIP Outdoor RGB (Multi-Color) Strobe

Typical Installation



Wall Mounting Option

